

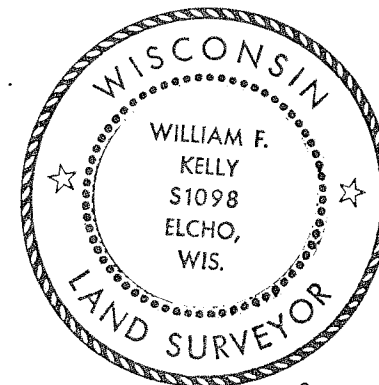
CERTIFIED LAND CORNER RESTORATION

Index No. E - 1014

State of Wisconsin }
 County of LANGLADE } ss.

History of original corner establishment:

ORIGINAL CORNER ESTABLISHED BY HIRAM FELLOWS IN THE 1860'S.



William F. Kelly

I WILLIAM F. KELLY, do hereby certify that on the 13th day of JUNE, 1980, I found evidence of the WEST 1/8 CORNER corner of SECTION 10 Township 32, North, Range 11 EAST, Fourth Principal Meridian, as described hereon; and that from this evidence I established a new monument and accessories as described hereon to perpetuate the original location of this corner.

Description of corner evidence found:

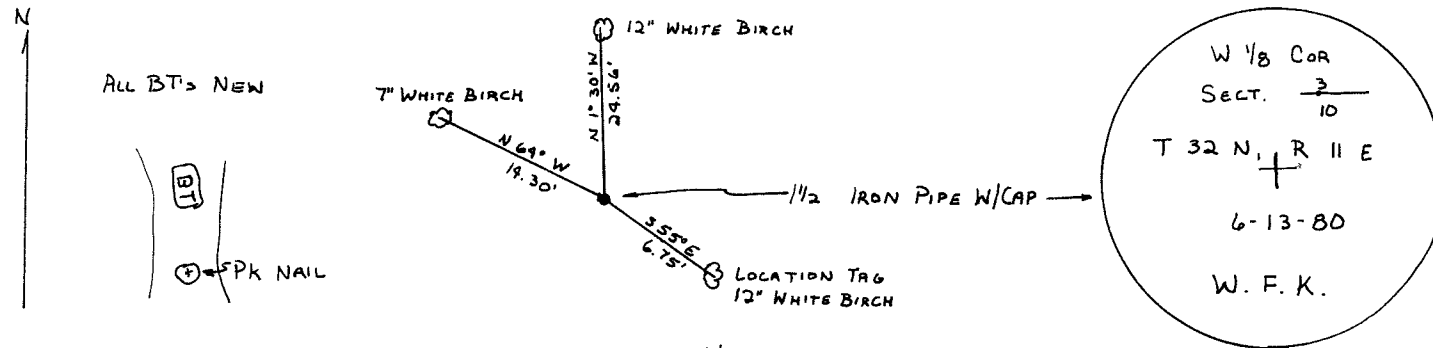
NO EVIDENCE OF CORNER WAS FOUND.

SET 1 1/2" x 42" IRON PIPE WITH BRASS CAP FROM CONTROL SURVEY BETWEEN THE NE AND NW SEC. CORNERS OF SECT. 10 T32N, R11E.

Resident witnesses:

.....

Description of monument and accessories I established to perpetuate the original location of this corner.



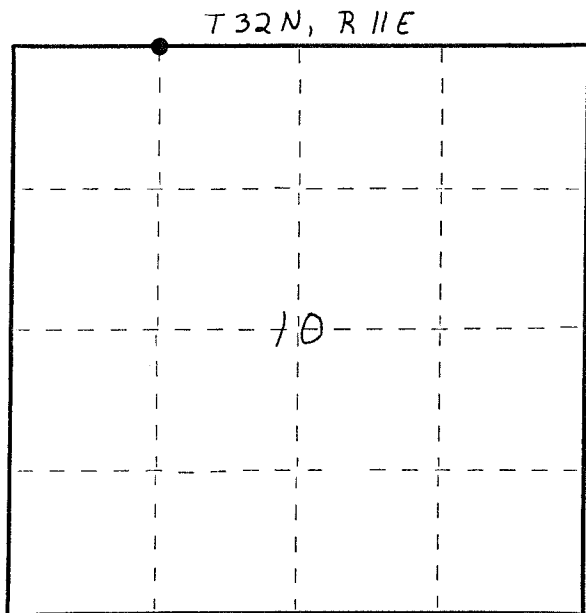
Dated at ELCHO, Wis., this 17th day of JUNE, 1980.

Signature William F. Kelly Title County Surveyor Registration No. S1098
 (County Surveyor, Registered Land Surveyor, or other duly authorized official)

Office of Register of Deeds, County of....., I hereby certify that the within instrument was filed in this office for record on the..... day of....., 19..... at..... o'clock..... M.

.....
 (Register of Deeds)

By..... Deputy



○ = Corner monument restored.