

LANGLADE COUNTY U.S. PUBLIC LAND CORNER RESTORATION

The South Quarter corner of Section 3, T. 32 N., R. 11 E., Langlade County, WI.

Corner was: (check all that apply)

- Restored through acceptance of an obliterated evidence location.
- Restored through acceptance of a found perpetuated location.
- Determined to be lost and re-established through proportionate methods.
 - Show bearings and distances to PLSS corners used for proportioning, and show original distances).
 - Restored/recovered/re-established in a location that differs from a previously established position.
 - (Show difference in plan view below).
- Check here if additional information is shown on the reverse side of this form.

4321103 0020

Describe record evidence, recovered physical evidence, occupational evidence, testimonial evidence and all other evidence considered in the recovery/restoration of the corner.

The original corner was established in 1860 by Hiram C. Fellows. West between 3 & 10, at 40.20 ch "over lake and set meander post and quarter section post". Original bearing trees: hemlock, 12", N65°W, 16 links and a hemlock, 16", S02E, 13 links. In 1980, former surveyor Kelly surveyed in Section 9 and measured the South line of Section 3 and shows on his map that he set the 1/16th corner to the west of this corner, but did not monument this quarter corner. 5/14/2002 D. Tiusty, D. Williams reestablished this corner by single proportionate measurement between adjoining section corners. The corner falls 12 feet west of the shoreline of Anderson Lake.

Physical description of the monument set:

I set a 2" dia. x 30" iron pipe with brass cap for the corner. I set a sign post next to the corner monument.

Describe the accessories used to perpetuate the corner. Include a plan view drawing and accessories found/set. Describe measuring point on bearing trees. Show any topographic features that would aid in future recovery of the corner.

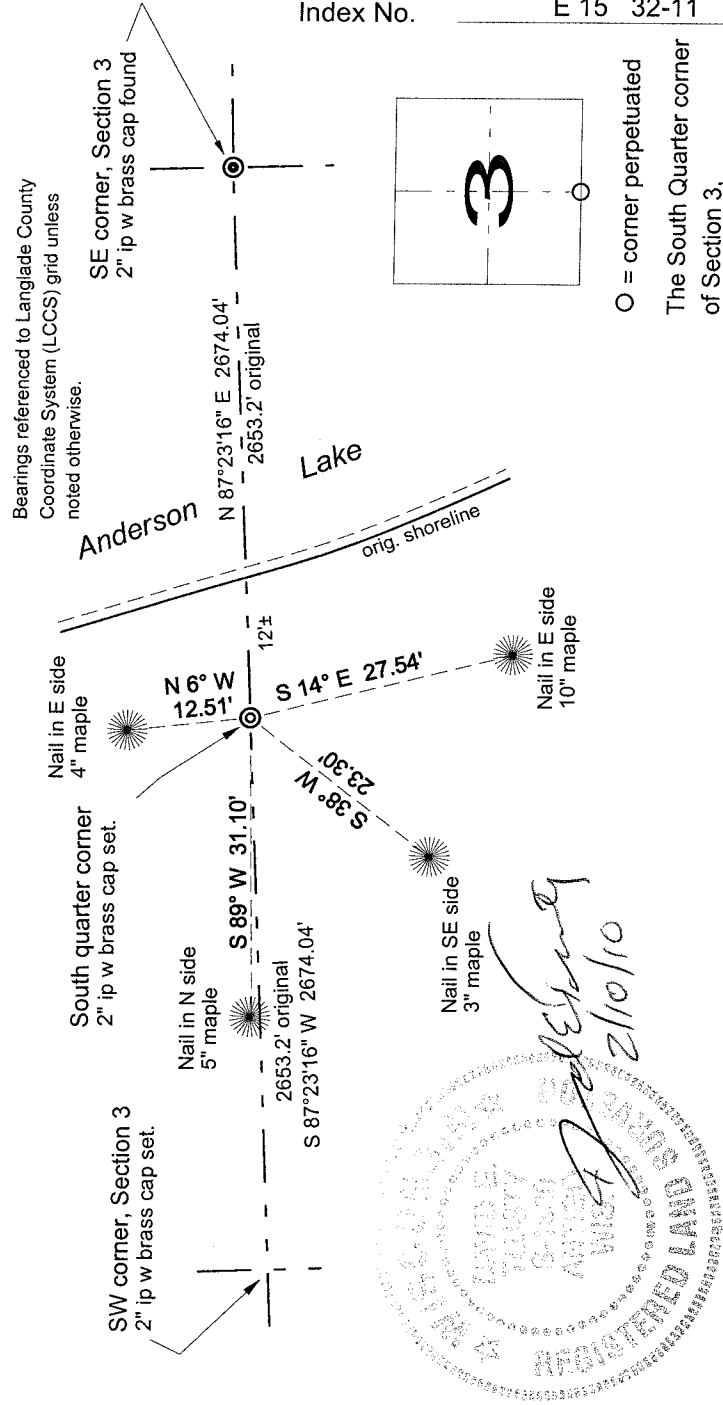
N	E	Desc
390395.63	629966.73	NW cor s10 by dpm
390517.50	632637.99	N1/4 cor s10 by spm
390639.38	635309.25	NE cor s10 ip w bcap fnd

Lang. County coordinates shown are based on least squares adjusted conventional traverse tied to county control monuments with NAD83(91) published values.

LEGEND

- ⊙ 2" iron pipe w/brass cap found
- ⊙ 2" iron pipe w/brass cap set

Bearing trees are blazed and painted blue and have "Bearing Tree" sign facing corner. Measurement is to an aluminum nail as noted. Bearings magnetic with hand compass.



I, David E. Tiusty, Registered Land Surveyor, as Langlade County Surveyor, certify that the corner location on this record was determined by me and that this U.S. Public Land Survey Monument Record is correct to the best of my knowledge and belief.

○ = corner perpetuated
 The South Quarter corner of Section 3,
 T. 32 N., R. 11 E.,
 Langlade County, WI