

LANGLADE COUNTY U.S. PUBLIC LAND CORNER RESTORATION

The Southeast corner of Section 3, T. 32 N., R. 11 E., Langlade County, WI.

Corner was: (check all that apply)

- Restored through acceptance of an obliterated evidence location.
- Restored through acceptance of a found perpetuated location.
- Determined to be lost and re-established through proportionate methods.
- Show bearings and distances to PLSS corners used for proportioning, and show original distances).
- Restored/recovered/re-established in a location that differs from a previously established position.
- (Show difference in plan view below).
- Check here if additional information is shown on the reverse side of this form.

3211030000

Describe record evidence, recovered physical evidence, occupational evidence, testimonial evidence and all other evidence considered in the recovery/restoration of the corner.

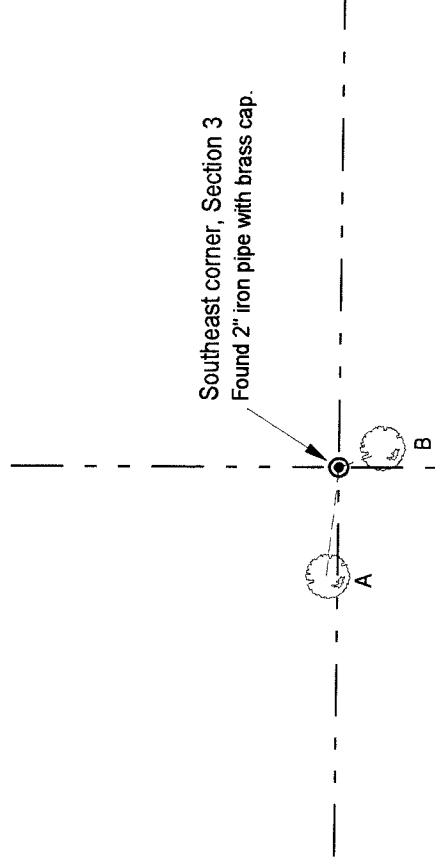
The original corner was established in 1860 by Hiram C. Fellows. Original BT's: birch, 14", N45°E, 33 links and a birch, 13", S87°W, 21 links. In 1890, B.F. Dorr surveyed in Section 2 and measured North and East from this corner. He measured 88.00 chains (5808') on the South line of Section 2. In 1980, former surveyor Kelly set 2" ip w/brass cap at the intersection of blazed lines running E-W and N-S. In 1980, surveyor Marv Seymour, DNR, used the corner set by Kelly and measured 5858.56'. * On 09/17/96, Don Solin, lifetime area resident and longtime adjoining landowner took me to the corner and said this was considered the corner by all adjoiners. The distance west to the lake fits the original survey distance. I accept the existing iron pipe with brass cap as a perpetuated location of the original corner, based on old blazed lines, distance to lake to the west, and resident testimony.

* on the South line of Section 2.

Physical description of the monument set:

Left existing 2" iron pipe with brass cap in place.
Set white vinyl sign post 0.5' north of the corner monument.

Describe the accessories used to perpetuate the corner. Include a plan view drawing and accessories found/set. Describe measuring point on bearing trees. Show any topographic features that would aid in future recovery of the corner.



New BT's meas. to alum. nail in low blaze on right side:

- A maple, 4", N 84° W, 12.05'
- B white birch, 8", S 20° E, 3.73'

Kellys 3 BT's have scribing visible, not re-measured:

- Aspen, N67°W, 3.25'
- Aspen, S85°E, 14.80'
- Aspen, S15°E, 24.21'

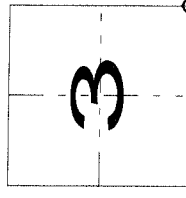
Bearings magnetic with hand compass.



I, David E. Trusty, Registered Land Surveyor, as Langlade County Surveyor, certify that the corner location on this record was determined by me and that this U.S. Public Land Survey Monument Record is correct to the best of my knowledge and belief.

Index No. _____

E17 32-11



O = corner perpetuated

The Southeast corner of Section 3, T. 32 N., R. 11 E., Langlade County, WI

FB14-90

