

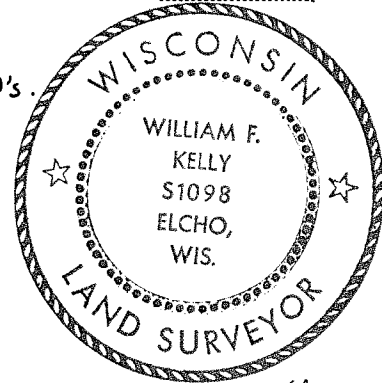
CERTIFIED LAND CORNER RESTORATION

Index No. E-17

State of Wisconsin }
County of LANGLADE } ss.

History of original corner establishment:

ORIGINAL CORNER ESTABLISHED BY HIRAM FELLOWS IN THE 1860'S.



I WILLIAM F. KELLY, do hereby certify that on the 12th day of JUNE, 1980, I found evidence of the SECTION 3+2 corner of SECTIONS 10+11 Township 32, North, Range 11 EAST, Fourth Principal Meridian, as described hereon; and that from this evidence I established a new monument and accessories as described hereon to perpetuate the original location of this corner.

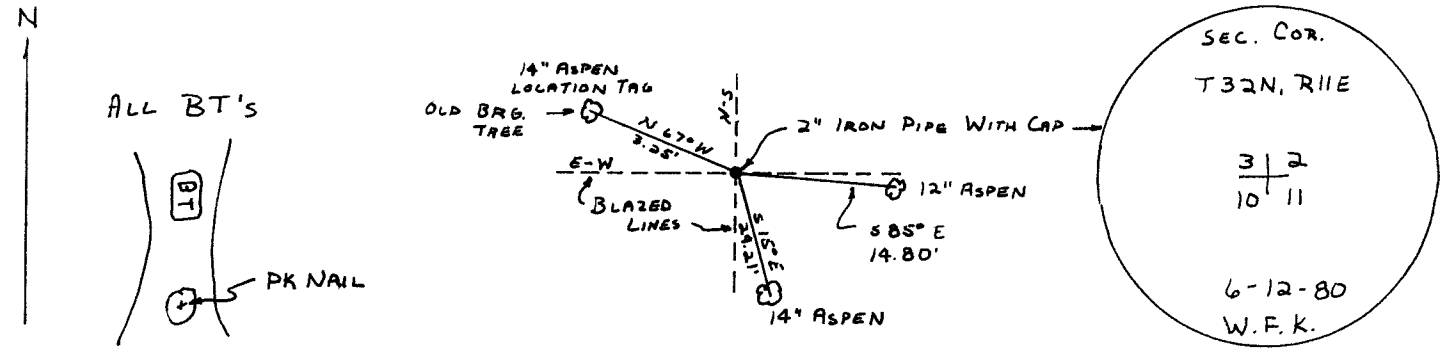
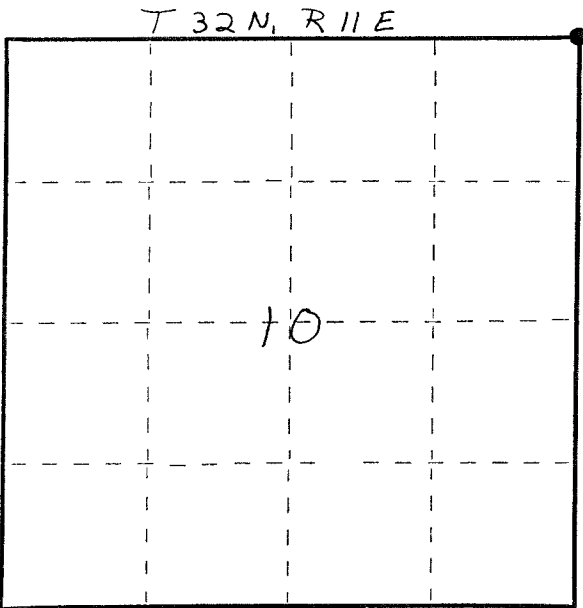
Description of corner evidence found:

LOCATED OLD BLAZE LINES RUNNING E-W AND N-S, ALSO FOUND William F. Kelly BLAZE MARKS ON BEARING TREE.

SET 2" x 42" IRON PIPE WITH BRASS CAP AT INTERSECTION OF BLAZED LINES AND IN LINE WITH BLAZE MARKS LOCATED ON PREVIOUSLY MARKED BEARING TREE.

Resident witnesses:

Description of monument and accessories I established to perpetuate the original location of this corner.



Dated at ELCHO, Wis., this 17th day of JUNE, 1980.

Signature William F. Kelly Title COUNTY SURVEYOR Registration No. S-1098
(County Surveyor, Registered Land Surveyor, or other duly authorized official)

Office of Register of Deeds, County of _____, I hereby certify that the within instrument was filed in this office for record on the _____ day of _____, 19____ at _____ o'clock _____ M.

(Register of Deeds)

By _____ Deputy

○ = Corner monument restored.