

432102 2000

# U.S. PUBLIC LAND SURVEY MONUMENT RECORD

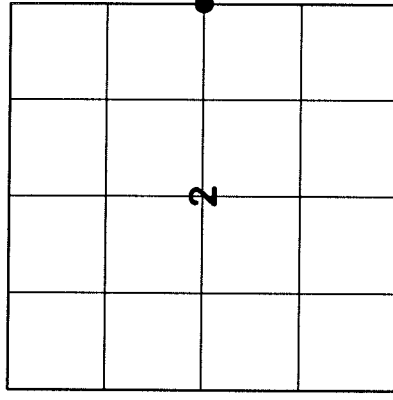
HISTORY OF ORIGINAL CORNER ESTABLISHMENT AND SUBSEQUENT RESTORATION AND DESCRIPTION OF ANY RECORD, MONUMENT OCCUPATIONAL, TESTIMONIAL OR OTHER EVIDENCE CONSIDERED:

THE ORIGINAL CORNER WAS SET BY MILLARD IN 1857 WITH THE ORIGINAL BEARING TREES OF:

- 6" TAMARACK N45°W 23 LINKS
- 8" TAMARACK S33°E 79 LINKS

IN 1891 DORR RAN THE EAST LINE OF SECTION 2 AND INDICATED IN HIS NOTES THAT THIS CORNER WAS NOT SET BY MILLARD. DORR MARKED A 10" TRUNK S56°E - 10 LINKS. WE DID NOT FIND DORR'S BEARING TREE SO WE SET A 2" X 30" ALUM. MONUMENT AT THE PRORATED DISTANCE BASED ON THE ORIGINAL SURVEY NOTES.

● = LOCATION OF CORNER

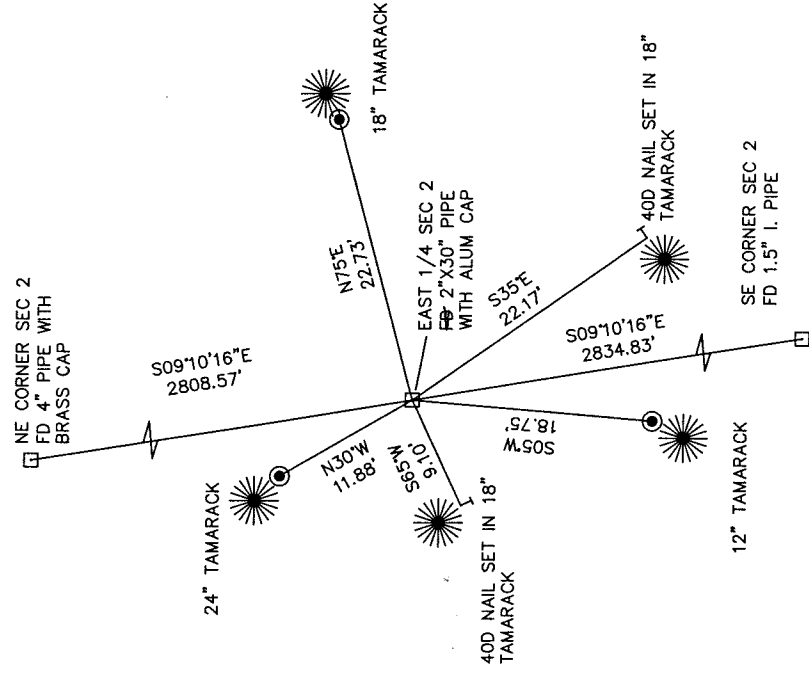


SECTION 2  
 TOWNSHIP 32 NORTH, RANGE 11 EAST  
 TOWN OF NEVA  
LANGLADE COUNTY, WISCONSIN

CORNER WAS: (CHECK ALL THAT APPLY)

- RESTORED THROUGH ACCEPTANCE OF AN OBLITERATED EVIDENCE LOCATION
- RESTORED THROUGH ACCEPTANCE OF A FOUND PERPETUATED LOCATION
- CONSIDERED A LOST CORNER AND REESTABLISHED THROUGH LOST CORNER PROPORTIONATE METHODS (INCLUDE A PLAN VIEW DRAWING SHOWING DISTANCES AND DIRECTIONS TO OTHER PUBLIC LAND SURVEY CORNERS USED FOR PROPORTIONING AND DETERMINING THE CORNER LOCATION)
- RESTORED OR REESTABLISHED IN A LOCATION THAT DIFFERS FROM A PREVIOUS RESTORATION OR REESTABLISHMENT (INCLUDE A PLAN VIEW DRAWING AND INDICATE WHAT WAS SET AND/OR FOUND)
- CHECK IF THERE IS ADDITIONAL INFORMATION ON BACK

DESCRIBE THE MONUMENT AND ACCESSORIES USED TO PERPETUATE THE LOCATION OF THE CORNER. (INCLUDE A PLAN VIEW DRAWING AND INDICATE WHAT WAS SET AND/OR FOUND) ALSO INCLUDE FOUR TIES TO THE SECTION CORNER AND DESCRIPTION OF THE TIES.



T- SET WHITE VINYL POST

● SET 3/4" X 30" RE-BAR

BEARINGS REFERENCED TO THE LANGLADE COUNTY COORDINATE SYSTEM

ALL TREES SHOWN HAVE BEARING TREE SIGNS NAILED TO FACE

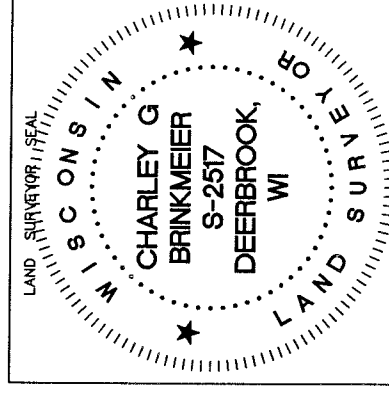


CHARLEY G. BRINKMEIER

(Type or print name) CERTIFY THAT THE CORNER LOCATION SHOWN ON THIS RECORD WAS DETERMINED BY ME OR UNDER MY DIRECTION AND CONTROL AND THAT THIS U.S. PUBLIC LAND SURVEY MONUMENT RECORD IS CORRECT AND COMPLETE TO THE BEST OF MY KNOWLEDGE AND BELIEF.

*Charley G. Brinkmeier*  
 SIGNATURE

2-20-17  
 DATE



INDEX NO.