

CERTIFIED LAND CORNER RESTORATION

Index No. E22

State of Wisconsin }
County of Lanlade } ss.

I Marvin E. Seymour, do hereby certify that on the 15th day of December, 19 80, I found evidence of the W. 1/8 corner of south line of Sec. 1 Township 32, North, Range 11, Fourth Principal Meridian, as described hereon; and that from this evidence I established a new monument and accessories as described hereon to perpetuate the original location of this corner.

Resident witnesses:

.....
.....
.....

History of original corner establishment:

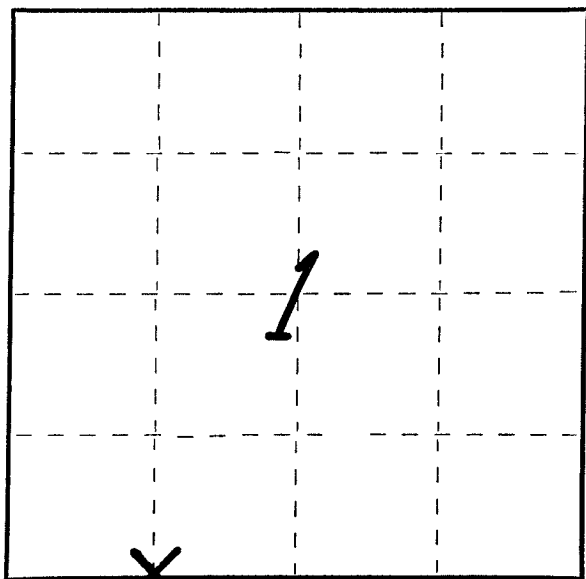
N one

Description of corner evidence found:

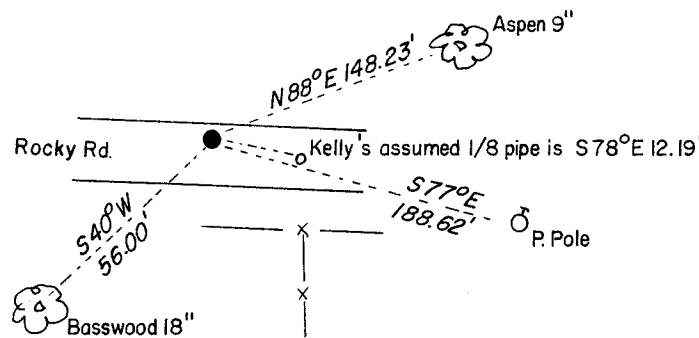
Set monument at 1308' easterly of SW 1 using information on a Lanlade Co. deed v. 152, p 536. The deed shows an angle point that most likely is the sec. corner.

Description of monument and accessories I established to perpetuate the original location of this corner.

FORM 985 H. C. MILLER CO., MILWAUKEE



○ = Corner monument restored.



Set 1 1/4" axle shaft in the north edge of the travelled way of Rocky Rd. approx. west of fence line. ↑ 12'

Dated at Boulder Jct., Wis., this 15th day of December, 19 80.

Signature Marvin E. Seymour Title Land Surveyor Registration No. S-1412
(County Surveyor, Registered Land Surveyor, or other duly authorized official)

Office of Register of Deeds, County of....., I hereby certify that the within instrument was filed in this office for record on the..... day of....., 19..... at..... o'clock..... M.

.....
(Register of Deeds)
By..... Deputy