

CERTIFIED LAND CORNER RESTORATION

Index No. ³²⁻¹² E-25

State of Wisconsin }
County of Lan. lade } ss.

History of original corner establishment:

Corner set in the 1930 resurvey.

I, Raymond J. Hallisy, do hereby certify that on the 5th day of June, 1971, I found evidence of the Section corner of 1, 6, 7, & 12 Township 32, North, Range 11E, Fourth, Principal Meridian, as described hereon; and that from this evidence I established a new monument and accessories as described hereon to perpetuate the original location of this corner.

Description of corner evidence found:

Corner had been dug out in the building of a logging road.
4" cement pipe with brass cap.

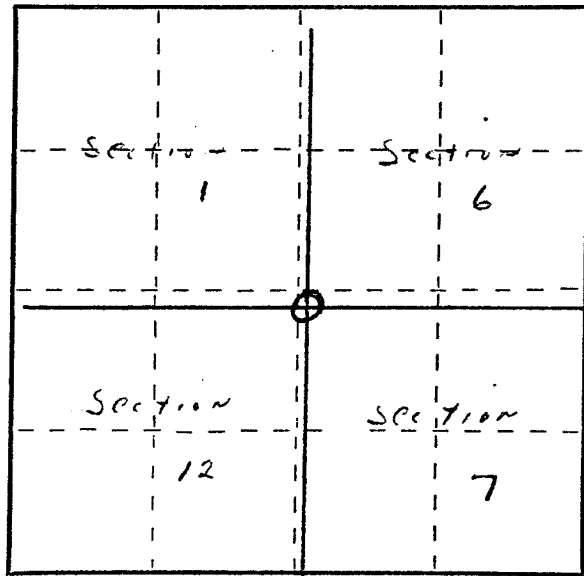
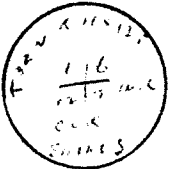
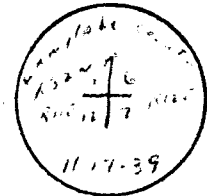
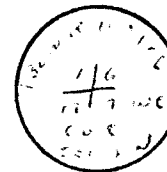
Resident witnesses:

.....
.....
.....

Description of monument and accessories I established to perpetuate the original location of this corner.

Replaced 4" pipe in its original location which is in center of logging road. Set 2" iron pipe with brass cap 50 links north and 50 links south.

BT's to corner
6" Hard Maple N46E 17.4 Links
8" Hard Maple S64W 49 Links
BT's faced at base of tree and scribed BT.



○ = Corner monument restored.

Dated at Antigo, Wis., this 5th day of June, 1971

Signature RJH Title Reg. Land Surveyor Registration No. 685
(County Surveyor, Registered Land Surveyor, or other duly authorized official)

Office of Register of Deeds, County of _____, I hereby certify that the within instrument was filed in this office for record on the _____ day of _____, 19____ at _____ o'clock _____ M.

.....
(Register of Deeds)

By _____ Deputy