

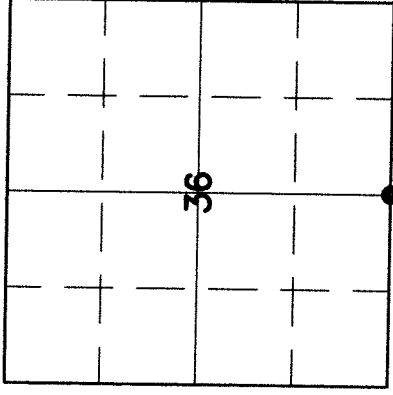
U.S. PUBLIC LAND SURVEY MONUMENT RECORD

43210360020

HISTORY OF ORIGINAL CORNER ESTABLISHMENT AND SUBSEQUENT RESTORATION AND DESCRIPTION OF ANY RECORD, MONUMENT OCCUPATIONAL, TESTIMONIAL OR OTHER EVIDENCE CONSIDERED:

THE ORIGINAL CORNER WAS SET BY FELLOWS IN 1859. NO BEARING TREES ARE IN THE AREA. THE LANGLADE COUNTY SURVEYOR DUG IN THE ROAD FOR THIS CORNER ON JUNE 16, 1997, BUT DID NOT FIND ANYTHING. WE LOCATED THE 40 FENCE TO THE EAST, DOUBLED IT OVER AND IT MATCHED WITH THE INTERMITTENT FENCE TO THE SOUTH. WE THEN SET A 6" SPIKE IN THE CENTERLINE OF CTH 1 AND THE EXTENSION OF THE FENCE TO THE SOUTH.

● = LOCATION OF CORNER



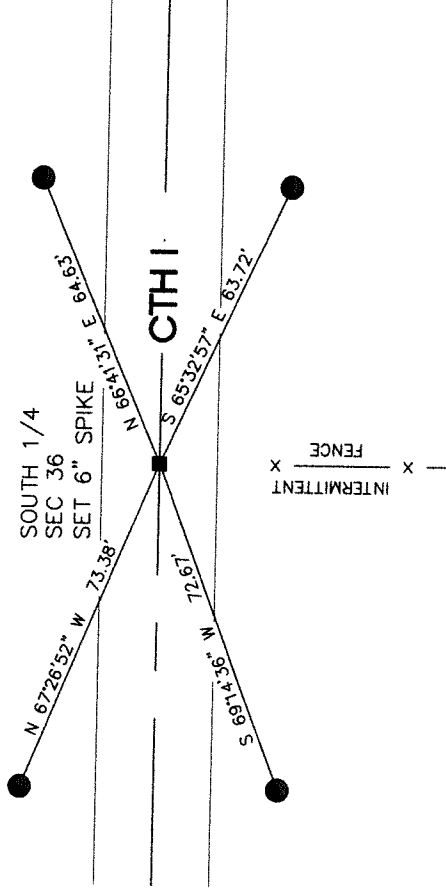
SECTION 36
 TOWNSHIP 32 NORTH, RANGE 10 EAST
 TOWN OF PECK
 LANGLADE COUNTY, WISCONSIN

CORNER WAS: (CHECK ALL THAT APPLY)

- RESTORED THROUGH ACCEPTANCE OF AN OBLITERATED EVIDENCE LOCATION
- RESTORED THROUGH ACCEPTANCE OF A FOUND PERPETUATED LOCATION
- CONSIDERED A LOST CORNER AND REESTABLISHED THROUGH LOST CORNER PROPORTIONATE METHODS (INCLUDE A PLAN VIEW DRAWING SHOWING DISTANCES AND DIRECTIONS TO OTHER PUBLIC LAND SURVEY CORNERS USED FOR PROPORTIONING AND DETERMINING THE CORNER LOCATION)
- RESTORED OR REESTABLISHED IN A LOCATION THAT DIFFERS FROM A PREVIOUS RESTORATION OR REESTABLISHMENT (INCLUDE A PLAN VIEW DRAWING AND INDICATE WHAT WAS SET AND/OR FOUND)
- CHECK IF THERE IS ADDITIONAL INFORMATION ON BACK

DESCRIBE THE MONUMENT AND ACCESSORIES USED TO PERPETUATE THE LOCATION OF THE CORNER. (INCLUDE A PLAN VIEW DRAWING AND INDICATE WHAT WAS SET AND/OR FOUND) ALSO INCLUDE FOUR TIES TO THE SECTION CORNER AND DESCRIPTION OF THE TIES.

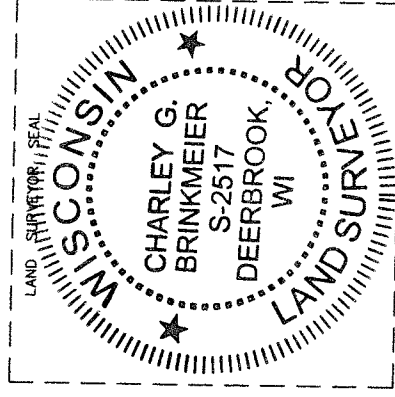
SET 3/4" RE-BARS AT ALL TIE LOCATIONS



CHARLEY G. BRINKMEIER

(Type or print name) CERTIFY THAT THE CORNER LOCATION SHOWN ON THIS RECORD WAS DETERMINED BY ME OR UNDER MY DIRECTION AND CONTROL AND THAT THIS U.S. PUBLIC LAND SURVEY MONUMENT RECORD IS CORRECT AND COMPLETE TO THE BEST OF MY KNOWLEDGE AND BELIEF.

Charley Brinkmeier
 SIGNATURE 5-25-04 DATE



223
 32-10

INDEX NO.