

LANGLADE COUNTY U.S. PUBLIC LAND CORNER RESTORATION

The Southeast corner of Section 36, T. 32 N., R. 10 E., Langlade County, WI.

3210360000

Corner was: (check all that apply)

- Restored through acceptance of an obliterated evidence location.
- Restored through acceptance of a found perpetuated location.
- Determined to be lost and re-established through proportionate methods.
- Show bearings and distances to PLSS corners used for proportioning, and show original distances).
- Restored/recovered/re-established in a location that differs from a previously established position.
- (Show difference in plan view below).
- Check here if addition information is shown on the reverse side of this form.

Describe record evidence, recovered physical evidence, occupational evidence, testimonial evidence and all other evidence considered in the recovery/restoration of the corner.

The original corner was established in 1859 by Hiram Fellows. Original bearing trees were: elm, 12", S38°W, 18 links; birch, 15", N15°W, 34 links; birch, 12", N58°E, 50 links and a sugar, 12", S85°E, 60 links. In 1894, Duchac did survey work in 6-31-11 and called this corner "a top of a pump". In 1899, Dorr used this corner for work in 6-31-11 but didn't describe it. In 1902, Weby used this corner for a survey in 31-32-11 but didn't describe it. In 1969, Poss said "Iron pipe in about 3' fill. Picked location with dip needle. John Matuszewski confirmed location". Poss set 1 1/2" wm's 50' N & S of the corner. 05/18/98 D. Tlusty, D. Williams found PK nail which measures 50.1' to bent IP w/brass cap north. Poss didn't dig the corner, but down 1.7', we found the top of a 1 1/4" x 28" pointed iron rod, which I assumed to be the pump part that Duchac called out. Top of rod is bent east. Accepted the straightened position of the iron rod found as the best evidence of the corner. There is also evidence of old fences running both N & S from here.

Physical description of the monument set:

Removed the existing iron rod and replaced it with a new 2" x 30" flared bottom, galvanized iron pipe with 3 1/4" dia. brass cap, top of which is 1' below the pavement.

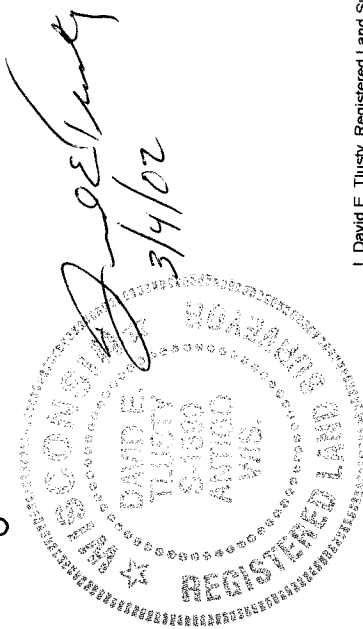
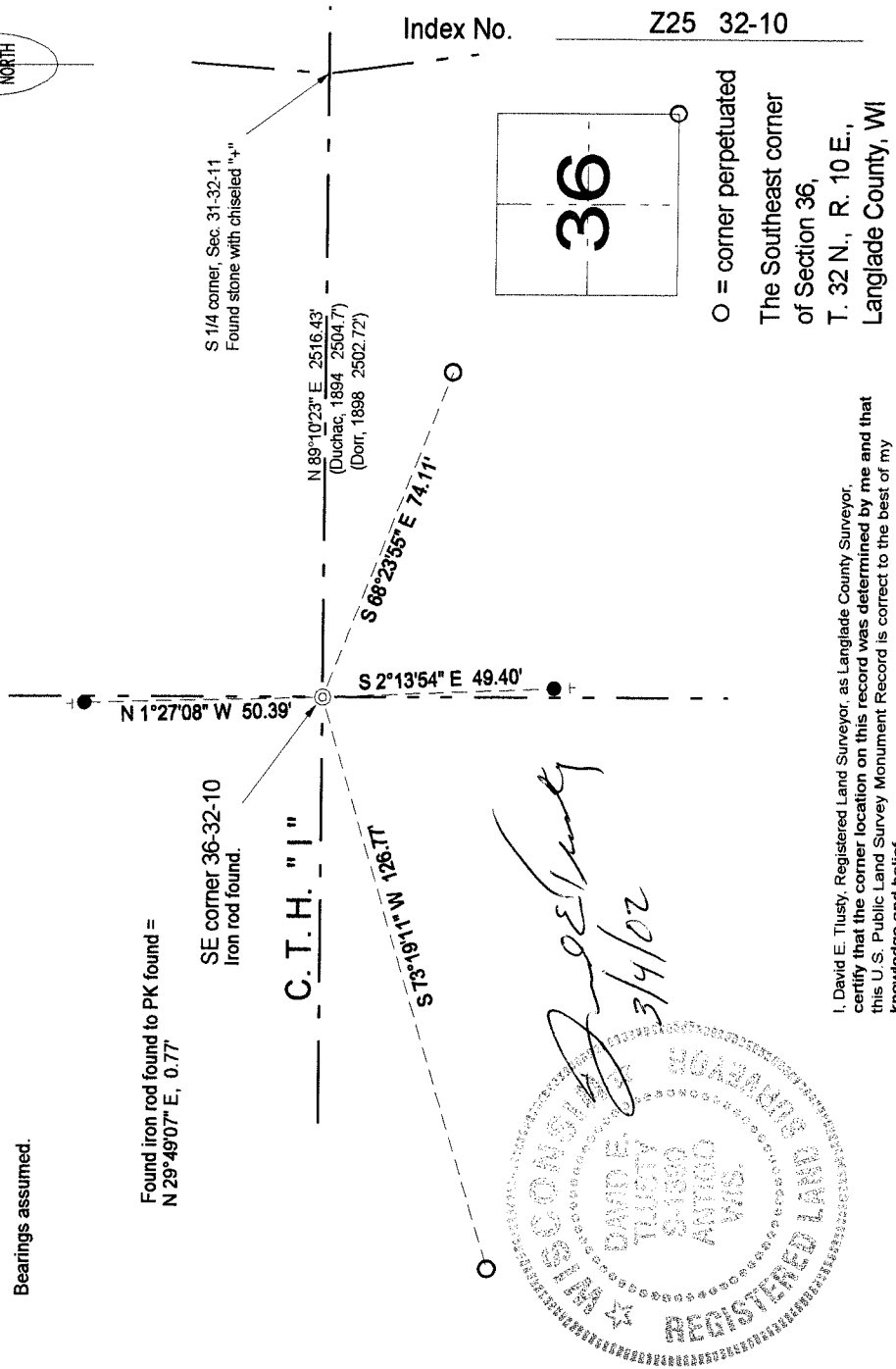
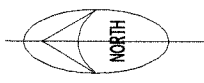
Describe the accessories used to perpetuate the corner. Include a plan view drawing and accessories found/set. Describe measuring point on bearing trees. Show any topographic features that would aid in future recovery of the corner.

LEGEND

- 3/4" x 30" rebar set
- iron pipe w/brass cap found
- utility pole
- Set white vinyl sign post

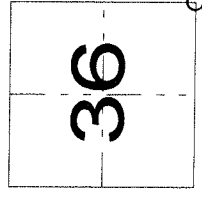
Bearings assumed.

FB14-98



I, David E. Tlusty, Registered Land Surveyor, as Langlade County Surveyor, certify that the corner location on this record was determined by me and that this U.S. Public Land Survey Monument Record is correct to the best of my knowledge and belief.

Index No. Z25 32-10



○ = corner perpetuated

The Southeast corner of Section 36, T. 32 N., R. 10 E., Langlade County, WI