

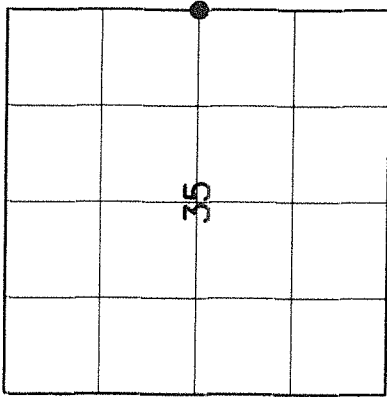
# U.S. PUBLIC LAND SURVEY MONUMENT RECORD

43210352000

HISTORY OF ORIGINAL CORNER ESTABLISHMENT AND SUBSEQUENT RESTORATION AND DESCRIPTION OF ANY RECORD, MONUMENT OCCUPATIONAL, TESTIMONIAL OR OTHER EVIDENCE CONSIDERED:

THE ORIGINAL CORNER WAS SET BY FELLOWS IN <sup>1860</sup>~~1859~~. THE ORIGINAL BEARING TREES  
 8" TAMARACK N44E, 8 LINKS  
 10" TAMRACK N87W 15 LINKS  
 THE EAST - WEST 1/4 LINE OF SECTION 36 WAS RUN BY WEBLEY IN 1902. WE LOCATED THE EAST 1/4 OF SECTION 36 AND A FENCE NEAR THE CENTER OF SECTION 36. WE FOUND THE BRASS CAP WAS OFF OF THE EXTENSION OF THE FENCE BY 15 FEET. WE ACCEPTED THE LOCATION AS A PERPETUATED LOCATION.

● = LOCATION OF CORNER

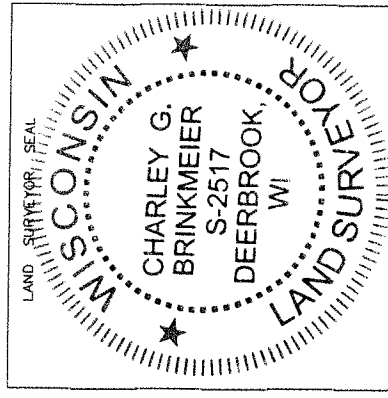
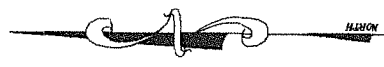
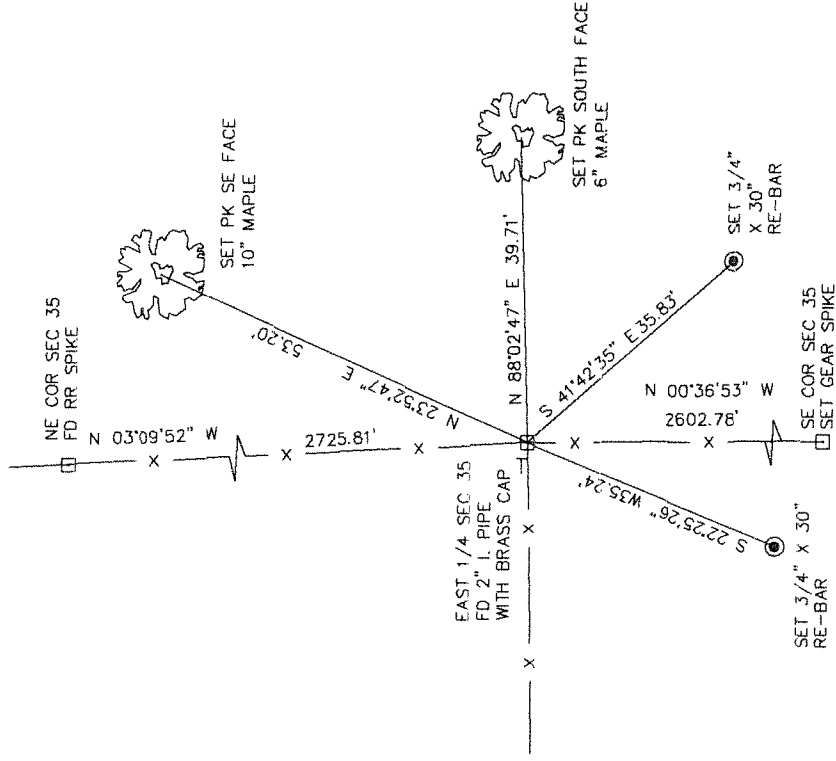


SECTION 35  
 TOWNSHIP 32 NORTH, RANGE 10 EAST  
 TOWN OF PECK  
 LANGLADE COUNTY, WISCONSIN

CORNER WAS: (CHECK ALL THAT APPLY)

- RESTORED THROUGH ACCEPTANCE OF AN OBLITERATED EVIDENCE LOCATION
- RESTORED THROUGH ACCEPTANCE OF A FOUND PERPETUATED LOCATION
- CONSIDERED A LOST CORNER AND REESTABLISHED THROUGH LOST CORNER PROPORTIONATE METHODS (INCLUDE A PLAN VIEW DRAWING SHOWING DISTANCES AND DIRECTIONS TO OTHER PUBLIC LAND SURVEY CORNERS USED FOR PROPORTIONING AND DETERMINING THE CORNER LOCATION)
- RESTORED OR REESTABLISHED IN A LOCATION THAT DIFFERS FROM A PREVIOUS RESTORATION OR REESTABLISHMENT (INCLUDE A PLAN VIEW DRAWING AND INDICATE WHAT WAS SET AND/OR FOUND)
- CHECK IF THERE IS ADDITIONAL INFORMATION ON BACK

DESCRIBE THE MONUMENT AND ACCESSORIES USED TO PERPETUATE THE LOCATION OF THE CORNER. (INCLUDE A PLAN VIEW DRAWING AND INDICATE WHAT WAS SET AND/OR FOUND) ALSO INCLUDE FOUR TIES TO THE SECTION CORNER AND DESCRIPTION OF THE TIES.



INDEX NO. X-21 32-10

**CHARLEY G. BRINKMEIER**

(Type or print name) CERTIFY THAT THE CORNER LOCATION SHOWN ON THIS RECORD WAS DETERMINED BY ME OR UNDER MY DIRECTION AND CONTROL AND THAT THIS U.S. PUBLIC LAND SURVEY MONUMENT RECORD IS CORRECT AND COMPLETE TO THE BEST OF MY KNOWLEDGE AND BELIEF.

*Charley Brinkmeier*  
 SIGNATURE

2-25-05  
 DATE