

CERTIFIED LAND CORNER RESTORATION

Index No. W-17

State of Wisconsin }
County of LANGLADE } ss.

I, WESLEY J. TRADEWELL, do hereby certify that on the 8TH day of JUNE, 19 79, I found evidence of the SOUTH WEST corner of N.W. 1/4, N.W. 1/4, SEC. 35, Township 32, North, Range 10 EAST, Fourth Principal Meridian, as described hereon; and that from this evidence I established a new monument and accessories as described hereon to perpetuate the original location of this corner.

Resident witnesses:
.....
.....
.....

History of original corner establishment:

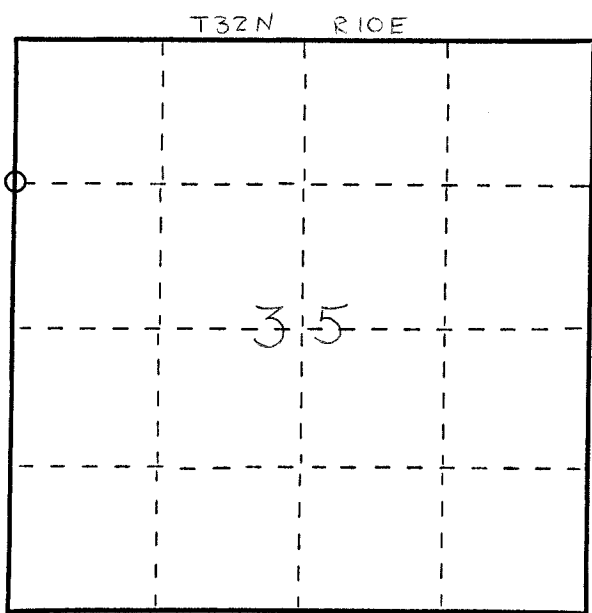
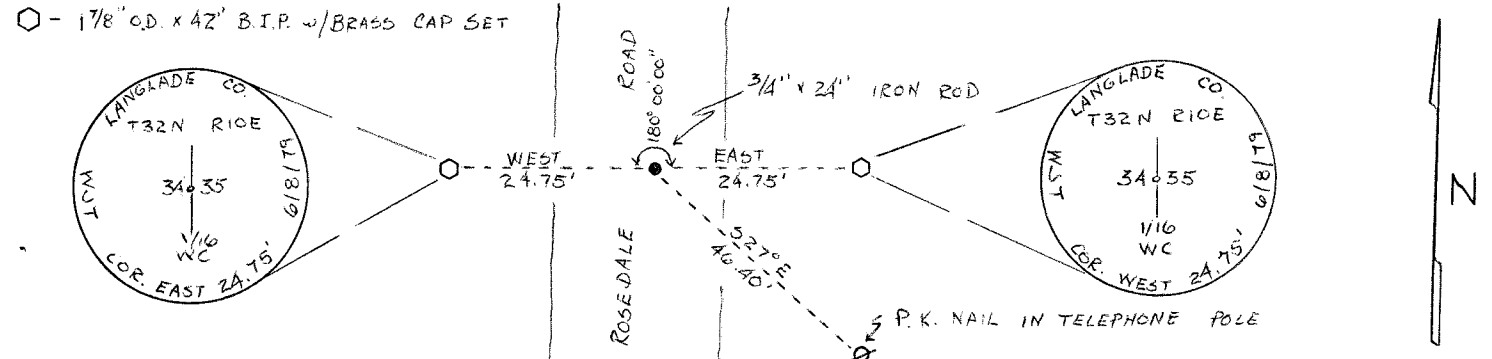
SET CORNER AT MIDPOINT OF WEST LINE OF NW 1/4, SEC. 35.

Description of corner evidence found:

FOUND NO RECORD OR EVIDENCE OF ANY PREVIOUS CORNER.



Description of monument and accessories I established to perpetuate the original location of this corner.



○ = Corner monument restored.

Dated at ANTIGO, Wis., this 13TH day of JUNE, 19 79.

Signature Wesley J. Tradewell Title REGISTERED LAND SURVEYOR Registration No. 1342
(County Surveyor, Registered Land Surveyor, or other duly authorized official)

Office of Register of Deeds, County of....., I hereby certify that the within instrument was filed in this office for record on the.....day of....., 19..... at.....o'clock..... M.

(Register of Deeds)

By.....Deputy

FORM 985 M. C. MILLER CO., MILWAUKEE