

LANGLADE COUNTY U.S. PUBLIC LAND CORNER RESTORATION

The East Quarter corner of Section 34, T. 32 N., R. 10 E., Langlade County, WI.

Corner was: (check all that apply)

- Restored through acceptance of an obliterated evidence location.
- Restored through acceptance of a found perpetuated location.
- Determined to be lost and re-established through proportionate methods.
- Show bearings and distances to PLSS corners used for proportioning, and show original distances).
- Restored/recovered/re-established in a location that differs from a previously established position.
- (Show difference in plan view below).
- Check here if additional information is shown on the reverse side of this form.

3210342000

Describe record evidence, recovered physical evidence, occupational evidence, testimonial evidence and all other evidence considered in the recovery/restoration of the corner.

The original corner was established in 1860 by Hiram C. Fellows. Original bearing trees: fir, 7", N70°W, 9 links, and a birch, 12", N40°E, 11 lks. In 1901, Webley found no evidence here and reset the corner proportionately between adjoining section corners. In 1906, Brooks found Webleys stake and surveyed the E-W 1/4 line in Section 35. In 1979, Wes Tradewell set a 3/4 " iron rod at the center of the town road and in line with a very old fence to the east. 07/07/00 I found Tradewells 3/4' iron rod in good condition, about 0.3' below new pavement. I set a Berntsen SN-1 nail in new patch over iron rod found.

Physical description of the monument set:

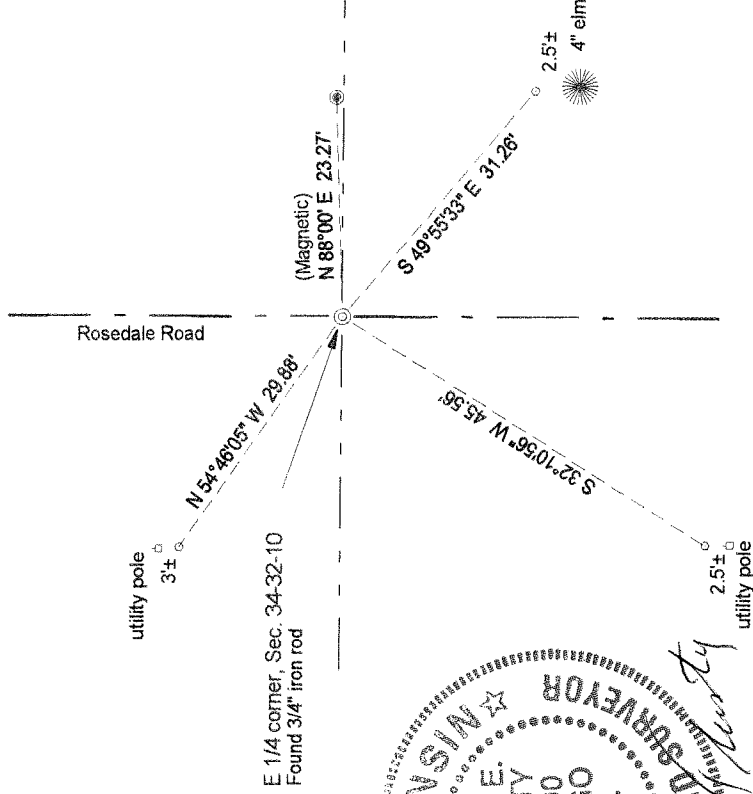
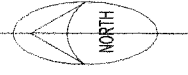
I left the existing 3/4" iron rod in place and set a Berntsen SN-1 nail over it.

Describe the accessories used to perpetuate the corner. Include a plan view drawing and accessories found/set. Describe measuring point on bearing trees. Show any topographic features that would aid in future recovery of the corner.

LEGEND

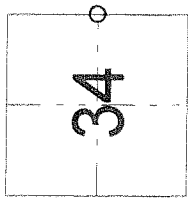
- 3/4" x 30" rebar set
- Tie bearings referenced magnetic bearing with compass near corner.

Field book: FB18-30



I, David E. Tlusty, Registered Land Surveyor, as Langlade County Surveyor, certify that the corner location on this record was determined by me and that this U.S. Public Land Survey Monument Record is correct to the best of my knowledge and belief.

Index No. X17 32-10



○ = corner perpetuated
 The East Quarter
 corner of Section 34,
 T. 32 N., R. 10 E.,
 Langlade County, WI