

CERTIFIED LAND CORNER RESTORATION

Index No. X-17

State of Wisconsin }
 County of LANGLADE } ss.

History of original corner establishment:

I WESLEY J. TRADEWELL, do hereby certify that on the 8TH day of JUNE, 1979, I found evidence of the WEST 1/4 corner of SECTION 35 Township 32, North, Range 10 EAST, Fourth Principal Meridian, as described hereon; and that from this evidence I established a new monument and accessories as described hereon to perpetuate the original location of this corner.

Resident witnesses:

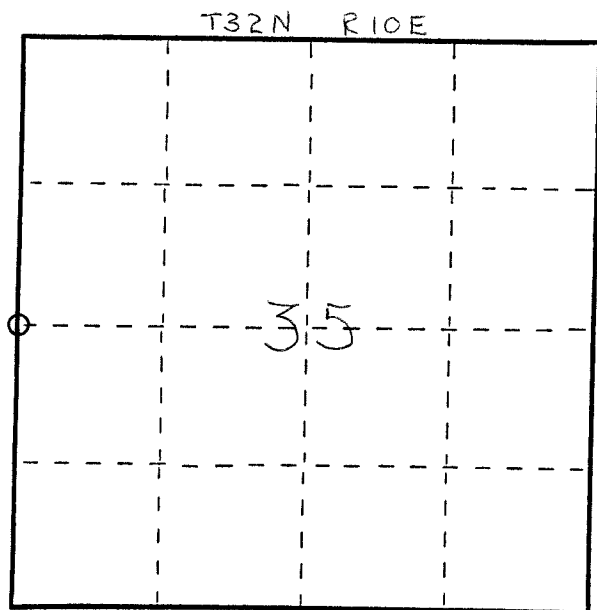
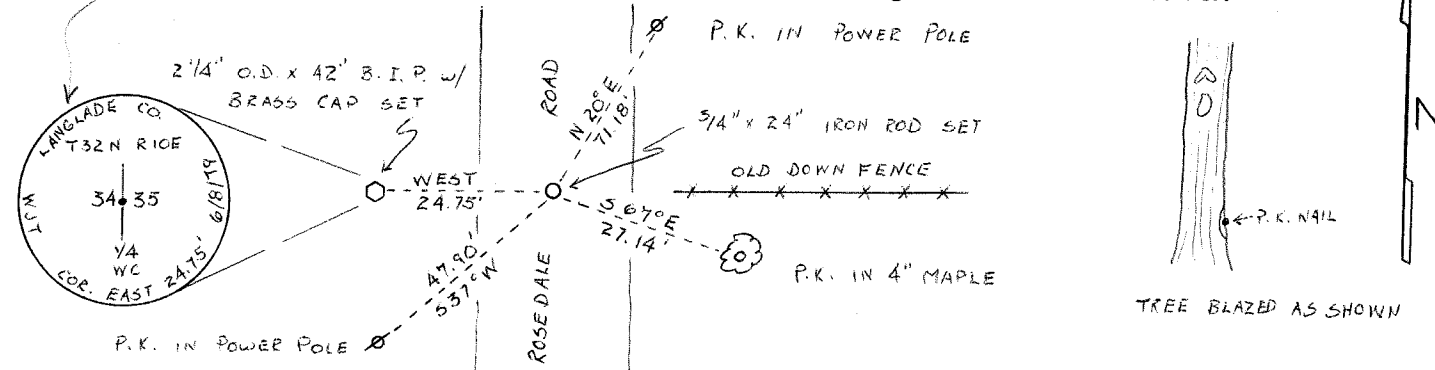
.....

Description of corner evidence found:

SET 3/4" x 24" IRON ROD AT INTERSECTION OF OLD FENCE LINE AND Q OF PAVEMENT; DISTANCE TO SW CORNER OF SECTION 35 = 2706' ± ; DISTANCE TO NW CORNER OF SECTION 35 = 2710' ± . FOUND NO OTHER EVIDENCE, AND NO RECORDS (OTHER THAN ORIGINAL) OF CORNER BEING SET.

7/29/92 NEIGHBOR SAYS WIT MON WAS REMOVED & FOUND IN DITCH - MOVED TO EAST SIDE OF ROAD DT.

Description of monument and accessories I established to perpetuate the original location of this corner.



○ = Corner monument restored.

Dated at ANTIGO, Wis., this 13TH day of JUNE, 1979

Signature: Wesley J. Tradewell Title REGISTERED LAND SURVEYOR Registration No. 1342
 (County Surveyor, Registered Land Surveyor, or other duly authorized official)

Office of Register of Deeds, County of....., I hereby certify that the within instrument was filed in this office for record on the.....day of....., 19..... at.....o'clock..... M.

(Register of Deeds)

By.....Deputy



FORM 985 - W. C. MILLER CO., MILWAUKEE