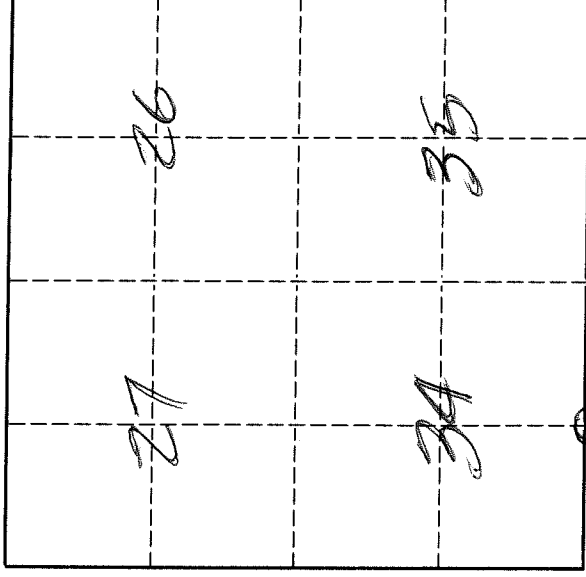


U. S. PUBLIC LAND SURVEY MONUMENT RECORD

I N S T R U C T I O N S:

This record shall show the location of the corner and shall include all of the following nine elements (a through i).

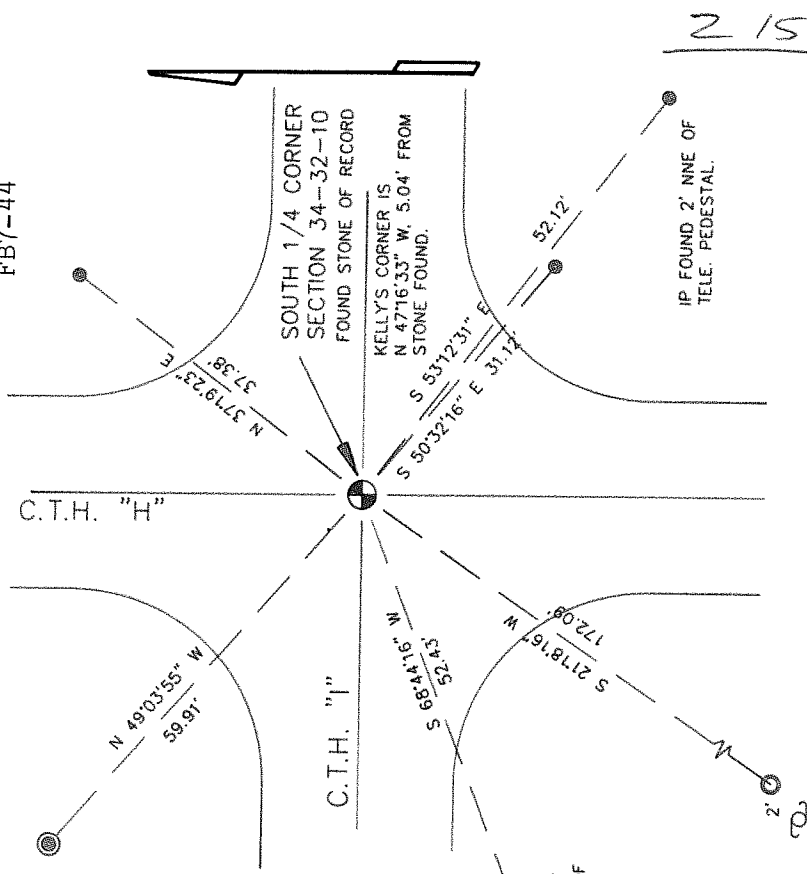
- (a) Identify the corner by reference to the U.S. public land survey system.
 O = Corner monument restored.



T. 32 N., R. 10 E.

The South Quarter corner of Section 34, Township 32 North, Range 10 East, Langlade County, Wisconsin.

- (b) Describe any record evidence, monument evidence, occupational evidence, testimonial evidence or any other material evidence you considered, and whether the monument was found or placed.
 The original corner was established in 1860 by Hiram C. Fellows. Original BT's: sugar, 7", S63°W, 9 lks., and a lind, 10", N74°E, 14 lks. In 1884, Dorr surveyed the N-S quarter line in Section 3-31-10. In 1895, Dorr called the corner a flintz boulder, 5" x 8" x 30" with + on top. In 1902, Webley surveyed the N-S 1/4 line in Section 3 and called this corner a stone set by Dorr. In 1988, former surveyor Kelly "located iron bar 6" below road surface. Set 1" IP over bar".
 07/29/96 D. Flusty, M. Keilcheski dug with backhoe. Found stone tipped over, but no X on top, apparently broken off when stone was tipped. Stone is the size described by Dorr. Stone found is approx. 5' SE of Kellys' corner. Didn't find iron bar mentioned by Kelly. Accepted location of stone found as best evidence of the corner perpetuated by Dorr. Removed stone and replaced it with a 1½" x 36" iron pipe with 4" brass cap, top of which is 24" below road surface.
 In the plan view drawing below, provide reference ties to at least 4 witness monuments, to at least 2 witness monuments. (Witness monuments shall be made of concrete, natural stone, iron or other equally durable material.)
 Describe witness monuments.
- (c)



- (d) Show a plan view drawing depicting the relevant monuments and reference ties which is sufficient in detail to enable accurate relocation of the corner monument if the corner monument is disturbed. Indicate north.

- NOTES:
 ● 2" ALUM. WITNESS MON. FOUND
 ⊕ 3/4" RE-BAR WITNESS SET
 ⊕ 3/4" IRON PIPE FOUND
 ⊕ POWER POLE
 ⊕ VINYL SIGN POST SET

BEARINGS ASSUMED & REFERENCED TO THE N-S 1/4 LINE OF SEC. 34, WHICH IS ASSUMED TO BEAR N 0°43'18" W. 5352.93' TO N1/4 COR. STONE.

2 15 32-10

Describe any material discrepancy between the location of the corner as restored or reestablished and the location of that corner as previously restored or reestablished by distance and direction. Show the discrepancy on the plan view drawing under (d), above. Show the distances between the corner as previously restored or reestablished and (1) the corner as restored or reestablished, and (2) to at least 2 of the witness monuments shown on the drawing in (d), above.
See difference shown on tie sketch.

- (f) Was the corner restored through acceptance of (1) an obliterated evidence location, or, (2) a found perpetuated location?
A found perpetuated location.

- (g & h) Was the corner reestablished through lost corner proportionate methods? If so, show the method, including the directions and distances to other public land survey corners used as evidence or used for proportioning in determining the corner location.
No.

(i) I, David E. Tlusty, Langlade County Surveyor,
(type or print name)

certify that the corner location shown on this record was determined by me or under my direction and control and that this U. S. Public Land Survey Monument Record is correct and complete to the best of my knowledge and belief.

David E. Tlusty 8/6/96
Signature Date

