

LANGLADE COUNTY U.S. PUBLIC LAND CORNER RESTORATION

The Southeast corner of Section 34, T. 32 N., R. 10 E., Langlade County, WI.

Corner was: (check all that apply)

- Restored through acceptance of an obliterated evidence location.
- Restored through acceptance of a found perpetuated location.
- Determined to be lost and re-established through proportionate methods.
- Show bearings and distances to PLSS corners used for proportioning, and show original distances).
- Restored/recovered/re-established in a location that differs from a previously established position.
- (Show difference in plan view below).
- Check here if addition information is shown on the reverse side of this form.

3210340000

Describe record evidence, recovered physical evidence, occupational evidence, testimonial evidence and all other evidence considered in the recovery/restoration of the corner.

The original corner was established in 1859 by Hiram C. Fellows. Original bearing trees: pine, 12", N25°W, 20 links; sugar, 12", S72°E, 9 links; fir, 10", N18°E, 55 links and a fir, 6", S27°W, 16 links. In 1901, Webley surveyed to the North from this corner, but didn't describe it. In 1906, Brooks said "orig BT all gone. Gass pipe corner set by Webley". In 1988 former surveyor Kelly " located RR spike set over iron rod called for in Hutchinson notes". 07/07/00 I found a 1 1/4" iron pipe, upright and in good condition, 2.2' below road surface. Accepted it as the pipe described by Brooks and as the best evidence of the corner.

Physical description of the monument set:

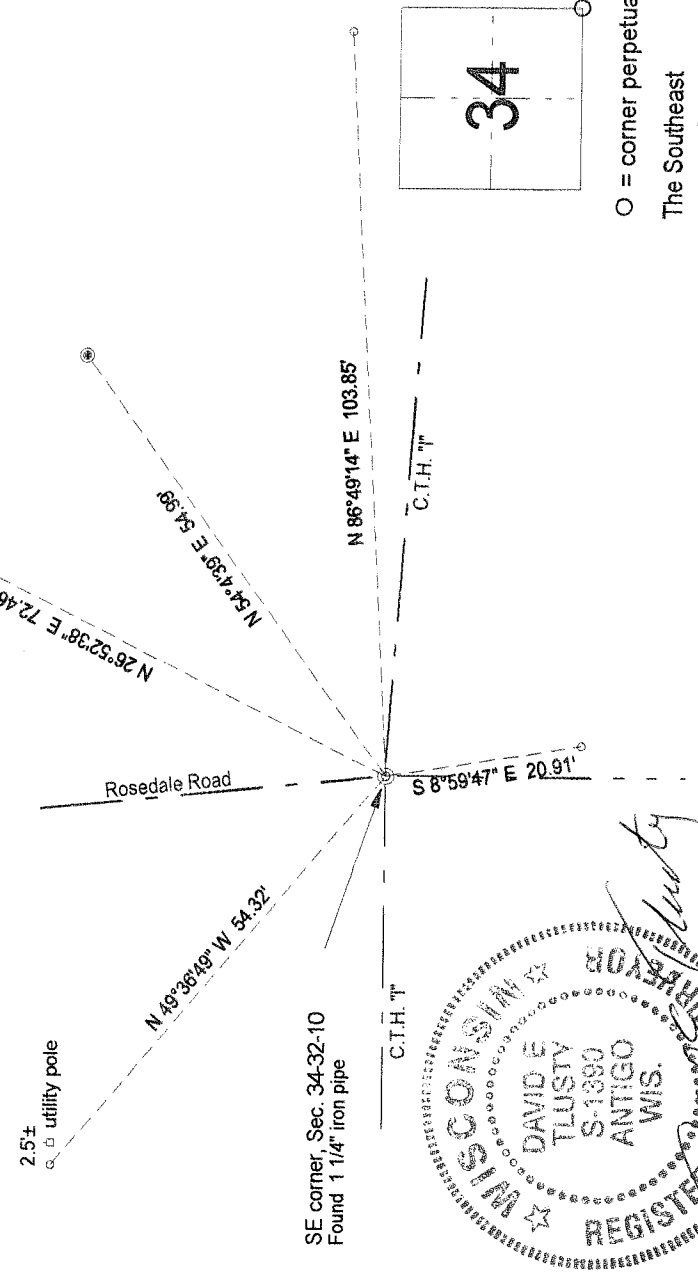
I left the existing 1 1/4" iron rod in place and set a *GENE HOBBS SPIKE* **Berntsen SN-1** nail over it.
Set short ties, nail in aluminum tab, SE, 1.94' and SW, 2.21'.

Describe the accessories used to perpetuate the corner. Include a plan view drawing and accessories found/set. Describe measuring point on bearing trees. Show any topographic features that would aid in future recovery of the corner.

LEGEND

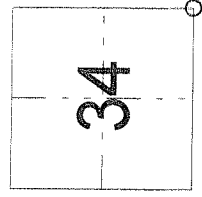
- 3/4" x 30" rebar set
- Tie bearings referenced magnetic bearing with compass near corner.
- 2" aluminum monument found flush with lawn

Field book: FB18-32



SE corner, Sec. 34-32-10
Found 1 1/4" iron pipe

Index No. Z17 32-10



○ = corner perpetuated
The Southeast corner of Section 34, T. 32 N., R. 10 E., Langlade County, WI

I, David E. Tlusty, Registered Land Surveyor, as Langlade County Surveyor, certify that the corner location on this record was determined by me and that this U.S. Public Land Survey Monument Record is correct to the best of my knowledge and belief.