

LANGLADE COUNTY U.S. PUBLIC LAND CORNER RESTORATION

The East Quarter corner of Section 33, T. 32 N., R. 10 E., Langlade County, WI.

Corner was: (check all that apply)

- Restored through acceptance of an obliterated evidence location.
- Restored through acceptance of a found perpetuated location.
- Determined to be lost and re-established through proportionate methods.
- Show bearings and distances to PLSS corners used for proportioning, and show original distances.
- Restored/recovered/re-established in a location that differs from a previously established position.
- (Show difference in plan view below).
- Check here if additional information is shown on the reverse side of this form.

43210332000

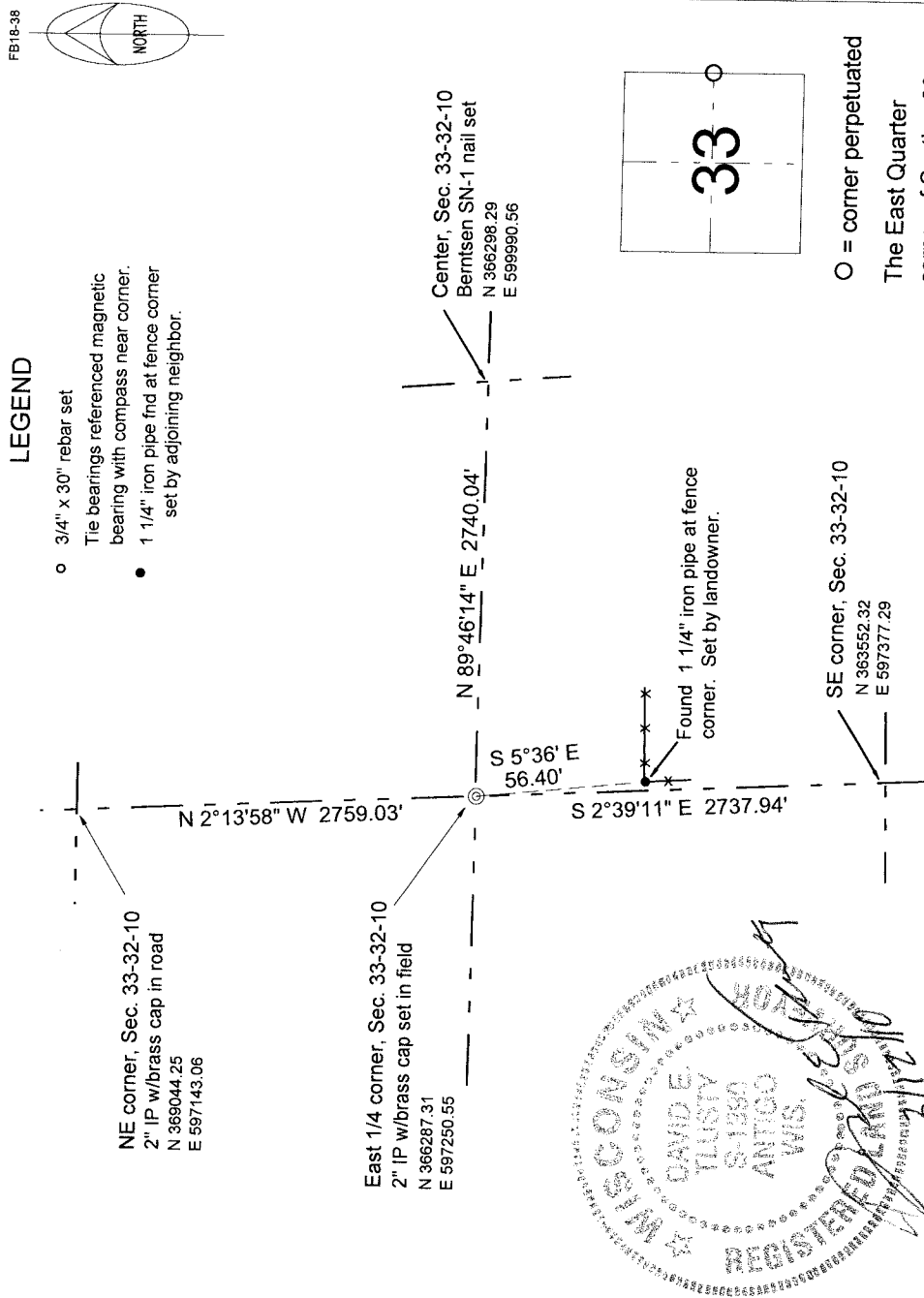
Describe record evidence, recovered physical evidence, occupational evidence, testimonial evidence and all other evidence considered in the recovery/restoration of the corner.

The original corner was established in 1860 by Hiram Fellows. Original bearing trees: ironwood, 7", S54W, 10 links and a sugar, 10", S42E, 29 links. There is no other survey information on file for Sections 33 & 34. I re-established the corner by measuring to many fences and fence corners and computing a best fit of that occupation evidence (see map 30517). 07/31/00 I set the monument described below. Corner falls in open field with no nearby ties.

Physical description of the monument set:

- I set a 2" x30" galvanized iron pipe with brass cap, up 0.3'
- I set a sign post 0.5' north of the corner monument.

Describe the accessories used to perpetuate the corner. Include a plan view drawing and accessories found/set. Describe measuring point on bearing trees. Show any topographic features that would aid in future recovery of the corner.



I, David E. Tlusty, Registered Land Surveyor, as Langlade County Surveyor, certify that the corner location on this record was determined by me and that this U.S. Public Land Survey Monument Record is correct to the best of my knowledge and belief.

Index No. X13 32-10

○ = corner perpetuated
The East Quarter
corner of Section 33,
T. 32 N., R. 10 E.,
Langlade County, WI