

LANGLADE COUNTY U.S. PUBLIC LAND CORNER RESTORATION

The Southeast corner of Section 33, T. 32 N., R. 10 E., Langlade County, WI.

Corner was: (check all that apply)

- Restored through acceptance of an obliterated evidence location.
- Restored through acceptance of a found perpetuated location.
- Determined to be lost and re-established through proportionate methods.
- Show bearings and distances to PLSS corners used for proportioning, and show original distances).
- Restored/recovered/re-established in a location that differs from a previously established position.
- (Show difference in plan view below).
- Check here if additional information is shown on the reverse side of this form.

32-10330000

Describe record evidence, recovered physical evidence, occupational evidence, testimonial evidence and all other evidence considered in the recovery/restoration of the corner.

The original corner was established in 1859 by Hiram C. Fellows. Original bearing trees: fir, 8", N42°W, 12 links; fir, 9", N67°E, 32 links; sugar, 8", S45°E, 48 links and a hemlock, 14", S14°W, 8 links. There is no other information on this corner in the County Surveyor records. We dug here with a backhoe several years ago, but didn't find anything. July, 2000 D. Tlusty after reviewing GPS data in Section 34, I established this corner on an extension of a line from the SE corner of Section 34 through the S1/4 corner of Section 34, extended West to the point of intersection with the extension of an old fence from the North.

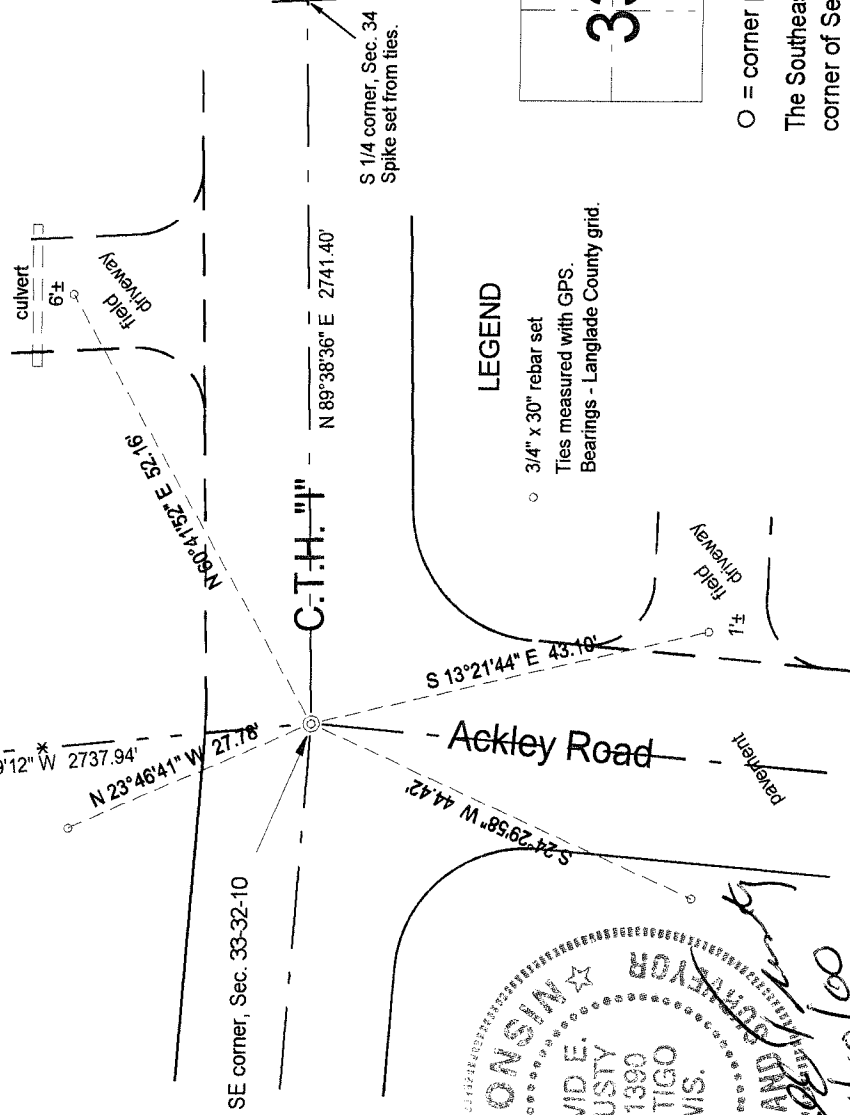
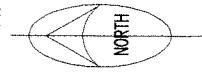
Physical description of the monument set:

No monument set at this time, as road is under construction.

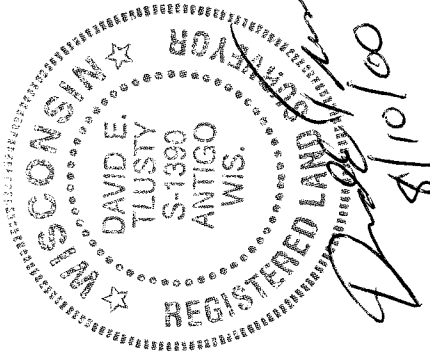
Describe the accessories used to perpetuate the corner. Include a plan view drawing and accessories found/set. Describe measuring point on bearing trees. Show any topographic features that would aid in future recovery of the corner.

W 1/4 corner, Sec. 34
Spike set from ties.
2" x 30" IP SET

Field book: FB18-39

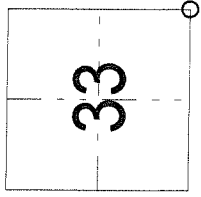


Index No. Z13 32-10



LEGEND

- 3/4" x 30" rebar set
- Ties measured with GPS.
- Bearings - Langlade County grid.



○ = corner perpetuated
The Southeast corner of Section 33, T. 32 N., R. 10 E., Langlade County, WI

I, David E. Tlusty, Registered Land Surveyor, as Langlade County Surveyor, certify that the corner location on this record was determined by me and that this U.S. Public Land Survey Monument Record is correct to the best of my knowledge and belief.