

LANGLADE COUNTY U.S. PUBLIC LAND CORNER RESTORATION

The East Quarter corner of Section 31, T. 32 N., R. 10 E., Langlade County, WI.

Corner was: (check all that apply)

- Restored through acceptance of an obliterated evidence location.
- Restored through acceptance of a found perpetuated location.
- Determined to be lost and re-established through proportionate methods.
- Show bearings and distances to PLSS corners used for proportioning, and show original distances).
- Restored/recovered/re-established in a location that differs from a previously established position.
- (Show difference in plan view below).
- Check here if addition information is shown on the reverse side of this form.

3210312000

Describe record evidence, recovered physical evidence, occupational evidence, testimonial evidence and all other evidence considered in the recovery/restoration of the corner.

The original corner was established in 1860 by Hiram C. Fellows. Original bearing trees: ironwood, 8", N55°E, 35 links, and an ironwood, 7", N88°W, 10 lks. In 1895, Dorr called for stone at many corners in this township, including the Center of Section 31, the Center of Section 32 and the E1/4 corner of Section 32, but made no mention of a stone at this corner. 07/05/00 Dave Tlusty, Mike Kielcheski dug with backhoe. Down 1.5' found a stone, approx 8" x 8" with an "X" chiseled on top. Accepted the stone as a previously perpetuated location of the original corner and as the best evidence.

Physical description of the monument set:

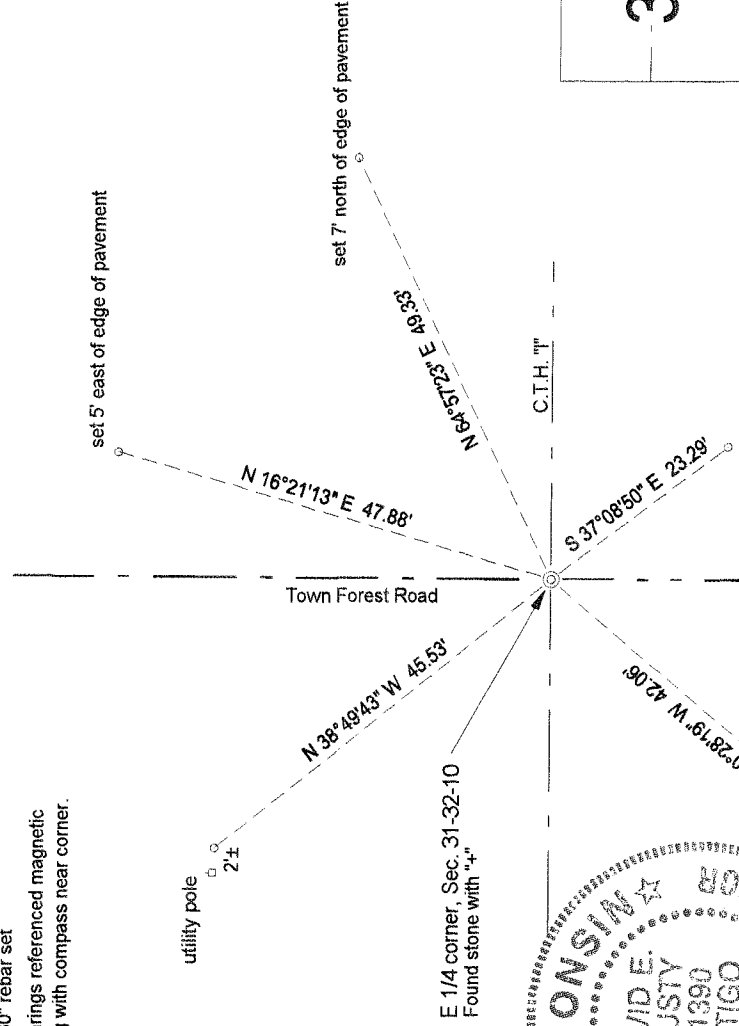
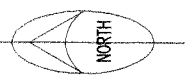
I left the existing stone in place and set a rebar on the West edge of it.
The stone found is approx. 2' south and 3' east of the apparent CL-CL intersection point.

Describe the accessories used to perpetuate the corner. Include a plan view drawing and accessories found/set. Describe measuring point on bearing trees. Show any topographic features that would aid in future recovery of the corner.

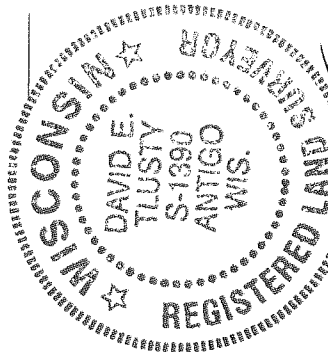
LEGEND

- 3/4" x 30" rebar set
- Tie bearings referenced magnetic bearing with compass near corner.

Field book: FB18-28



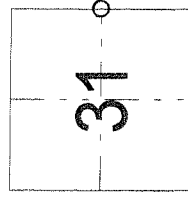
E 1/4 corner, Sec. 31-32-10
Found stone with "4"



David E. Tlusty
7/10/00

I, David E. Tlusty, Registered Land Surveyor, as Langlade County Surveyor, certify that the corner location on this record was determined by me and that this U.S. Public Land Survey Monument Record is correct to the best of my knowledge and belief.

Index No. X05 32-10



○ = corner perpetuated
The East Quarter
corner of Section 31,
T. 32 N., R. 10 E.,
Langlade County, WI