

U.S. PUBLIC LAND SURVEY MONUMENT RECORD

(Prepared and as required by S. A-E 7.08 WI Administrative Code)

The SOUTH QUARTER corner of Section 31, T. 32 N., R. 10 E., Langlade County, WI

Corner was: (check all that apply)

- Restored through obliterated evidence location.
- Restored through acceptance of a found perpetuated location.
- Determined to be lost and re-established through proportionate methods.
(Show bearings and distances to PLSS corners used for proportioning.)
- Restored/recovered/reestablished in a location that differs from a previously established position. (Show difference in plan view below.)

321031 0020

- Check here if additional information is shown on the reverse side of this form.

Describe record evidence, recovered physical evidence, occupational evidence, testimonial evidence and all other evidence considered in the recovery/restoration of the corner.

The original corner was established in 1859 by Hiram C. Fellows. Original bearing trees: fir, 6", S06°E, 16 lks., spruce, 20", N11°E, 28 lks. Webley, in 1921, said this corner was "gone" and he re-established it by proportioning along town line. For the corner he set a sleight shoe, 3" x 2'. In 1922, he used the corner for a survey of the North-South quarter line in Section 31 and then described the corner as a sleigh shoe, 3" x 3'. 12/15/98 Dave Tlusty, Dean Williams, Glen Krivoshein searched for corner. At an old fence corner (down) found Webleys sleigh shoe (3" x 3'). Accepted it as the best evidence of the corner position and replaced it with a 2" x 30" aluminum pipe monument with 3 1/4" aluminum cap. Re-set sleigh shoe alongside new monument. Set and marked references as shown below.

Physical description of the monument set:

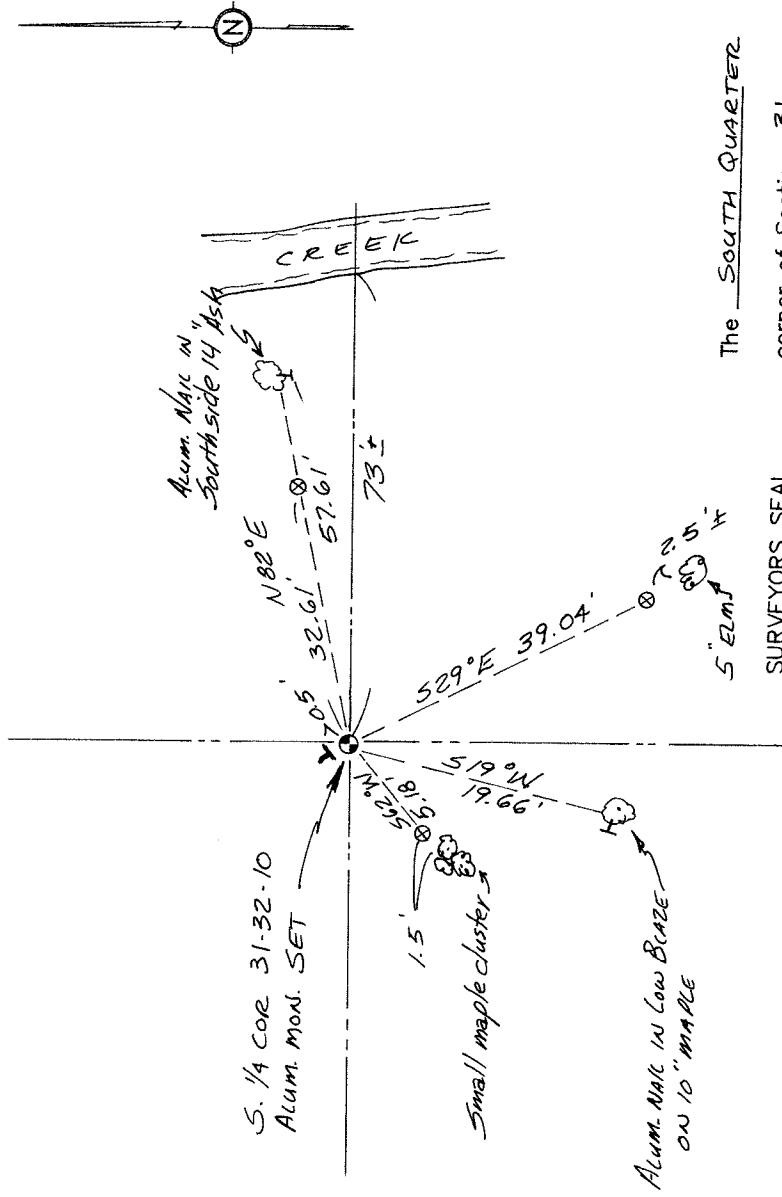
For the corner, I removed the sleigh shoe and replaced it with a 2" x 30" aluminum pipe monument with 3 1/4" aluminum cap.

Describe the accessories used to perpetuate the location of the corner. Include a plan view drawing and indicate accessories found/set. Describe measuring point on bearing trees. Show any topographic features that would aid in future recovery of the corner.

⊗ = 3/4" x 30" rebar set flush

Ⓢ = white vinyl sign post with "Survey Marker" sign set

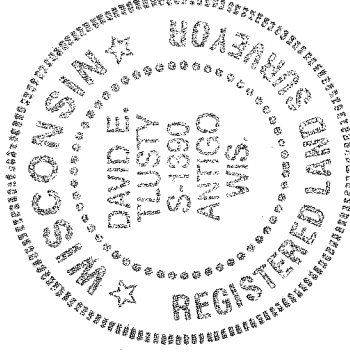
FB7-118



SURVEYORS SEAL

The SOUTH QUARTER
corner of Section 31

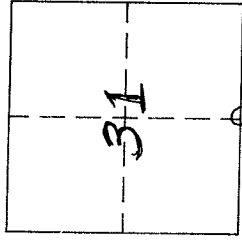
T. 32 N., R. 10 E.
Langlade County, WI



I, DAVID E. TLUSTY, LANGLADE COUNTY SURVEYOR, certify that the corner location shown on this record was determined by me or under my direction and control and that this U.S. Public Land Survey Monument Record is correct and complete to the best of my knowledge and belief.

David E. Tlusty 4/14/99
Signature Date

INDEX No. Z-3
32-10



○ = Location of corner