

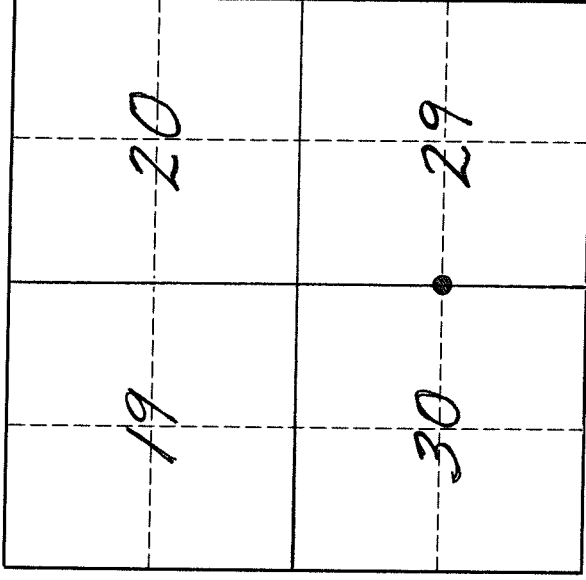
U. S. PUBLIC LAND SURVEY MONUMENT RECORD

INSTRUCTIONS:

This record shall show the location of the corner and shall include all of the following nine elements (a through i).

- (a) Identify the corner by reference to the U.S. public land survey system.
- = Corner monument restored.

The West Quarter corner of Section 29, Township 32 North, Range 10 East, Langlade County, Wisconsin.



T. 32 N., R. 10 E.

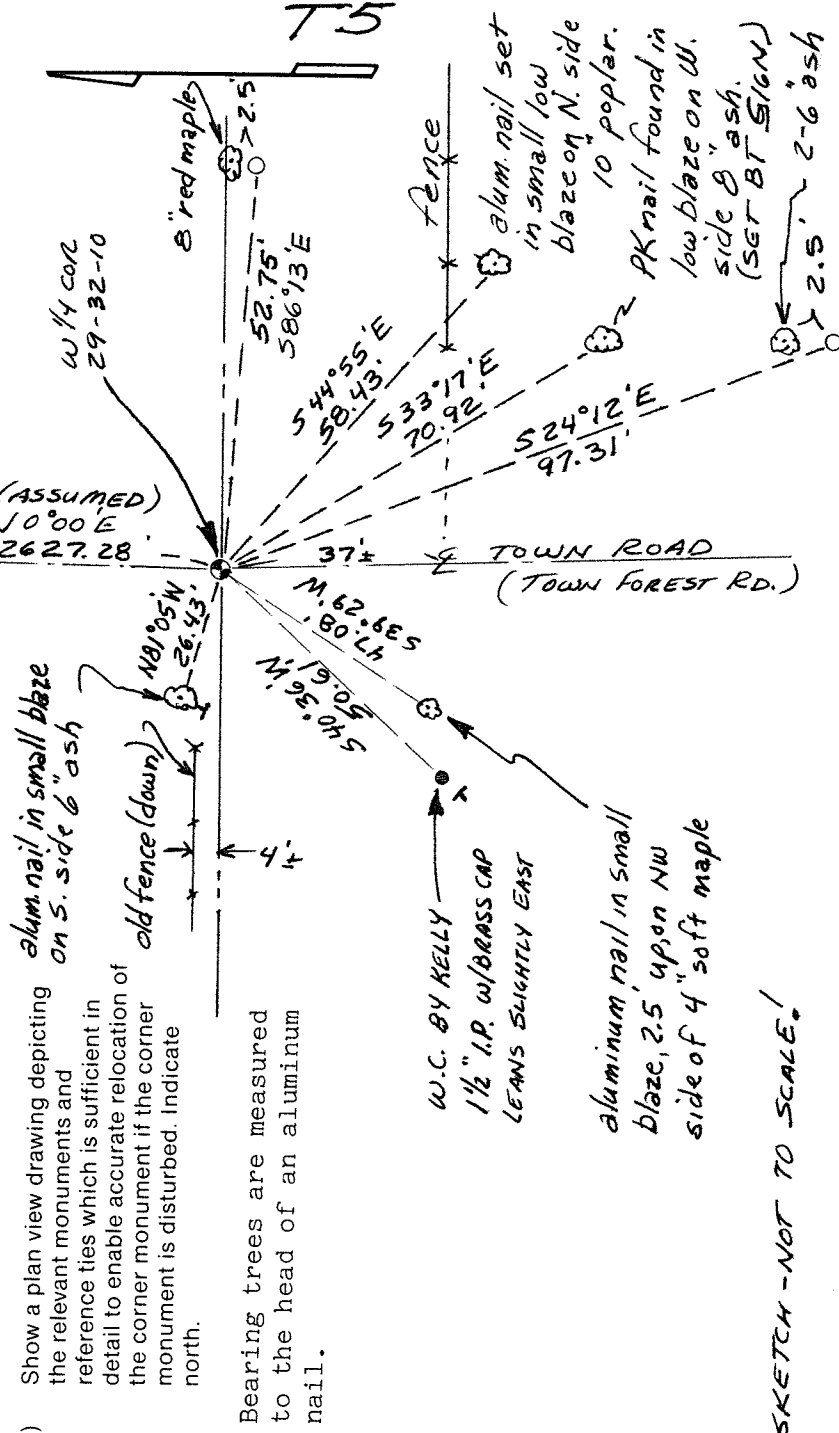
- (b) Describe any record evidence, monument evidence, occupational evidence, testimonial evidence or any other material evidence you considered, and whether the monument was found or placed.

The original corner was established in 1860 by Hiram C. Fellows. Original bearing trees: Ash, 12", N52°0'E, 15 lks., and an Elm, 10", N10°W, 20 lks. In 1939, Hutchinson (FB122-159) set a gas pipe for the corner, as 1/4 post had been dug up. 05/18/94 I found a 1 1/4" x 20" iron pipe, top of which was 25" below road surface and leaning slightly NE. This pipe found is approximately 38 feet north of a corner perpetuated by former surveyor Kelly as shown on corner form dated 10/21/81. I replaced the existing iron pipe with a new 1 1/4" x 36" black iron pipe with 4" brass cap, top of which is 18" below road surface. I set the old pipe alongside the new pipe and placed broken glass around the new corner monument.

- (c) In the plan view drawing below, provide reference ties to at least 4 witness monuments, or, if the location is within a municipality, to at least 2 witness monuments. (Witness monuments shall be made of concrete, natural stone, iron or other equally durable material.) Describe witness monuments.

- = 3/4" x 30" re-bar with red plastic cap
- = white vinyl sign post

- (d) Show a plan view drawing depicting the relevant monuments and reference ties which is sufficient in detail to enable accurate relocation of the corner monument if the corner monument is disturbed. Indicate north.



SKETCH - NOT TO SCALE!

Describe any material discrepancy between the location of the corner as restored or reestablished and the location of that corner as previously restored or reestablished by distance and direction. Show the discrepancy on the plan view drawing under (d), above. Show the distances between the corner as previously restored or reestablished and (1) the corner as restored or reestablished, and (2) to at least 2 of the witness monuments shown on the drawing in (d), above. The corner is approximately 38 feet north of an erroneous corner perpetuated by former surveyor Kelly as shown on corner form dated 10/21/81.

- (f) Was the corner restored through acceptance of (1) an obliterated evidence location, or, (2) a found perpetuated location?
A found perpetuated location.

- (g & h) Was the corner reestablished through lost corner proportionate methods? If so, show the method, including the directions and distances to other public land survey corners used as evidence or used for proportioning in determining the corner location.
No.

- (i) I, David E. Tlusty, Langlade County Surveyor,
(type or print name)

certify that the corner location shown on this record was determined by me or under my direction and control and that this U.S. Public Land Survey Monument Record is correct and complete to the best of my knowledge and belief.

David E. Tlusty May 24, 1994
Signature Date

