

CERTIFIED LAND CORNER RESTORATION

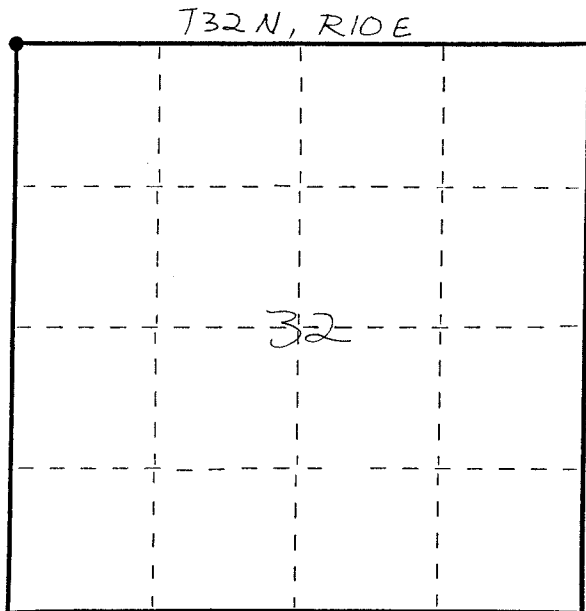
Index No. V-5

State of Wisconsin }  
County of LANGLADE } ss.

I WILLIAM F. KELLY, do hereby certify that on the 23RD day of OCTOBER, 1981, I found evidence of the NW corner of SECT. 32 Township 32, North, Range 10 EAST, Fourth Principal Meridian, as described hereon; and that from this evidence I established a new monument and accessories as described hereon to perpetuate the original location of this corner.

Resident witnesses:

.....  
.....  
.....



○ = Corner monument restored.

History of original corner establishment:

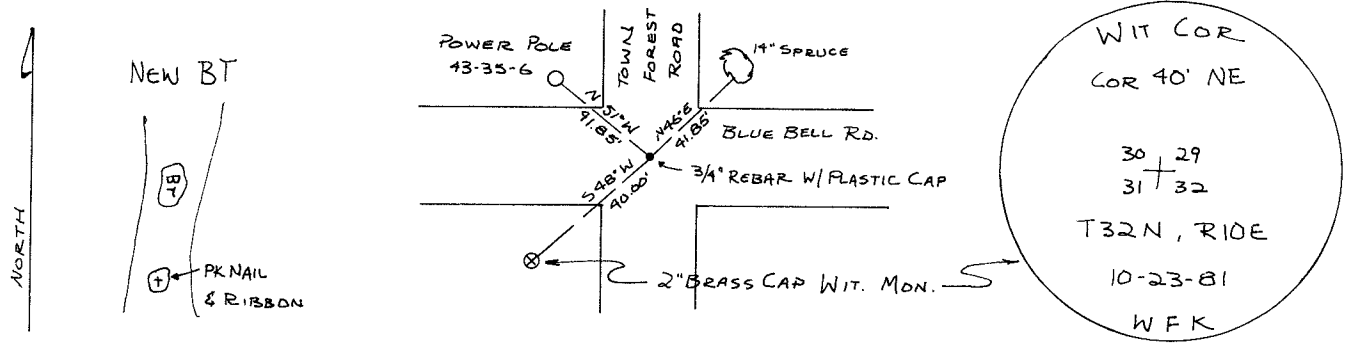
HIRAM C. FELLOWS ESTABLISHED THE ORIGINAL CORNER IN SEP., 1860.

Description of corner evidence found:

FOUND 3/4" REBAR WITH PLASTIC CAP. SET WIT. MON. - 2" x 42" BLACK IRON PIPE WITH BRASS CAP WIT. MONUMENT.

REBAR SET BY W.P.S. ON TRANSMISSION LINE SURVEY

Description of monument and accessories I established to perpetuate the original location of this corner.



Dated at ELCHO, Wis., this 23RD day of OCTOBER, 1981.

Signature William F. Kelly Title COUNTY SURVEYOR Registration No. 1098  
(County Surveyor, Registered Land Surveyor, or other duly authorized official)

Office of Register of Deeds, County of....., I hereby certify that the within instrument was filed in this office for record on the.....day of....., 19..... at.....o'clock..... M.

.....  
(Register of Deeds)  
By.....Deputy

*SHANN BT.  
W.P.S. SAYS THE MONUMENT SET IN 1981 ONLY TRAVELER POINTS & NOT NECESSARILY CORNERS.*



*William F. Kelly*