

# LANGLADE COUNTY U.S. PUBLIC LAND CORNER RESTORATION

The East Quarter corner of Section 28, T. 32 N., R. 10 E., Langlade County, WI.

**Corner was: (check all that apply)**

3210282000

- Restored through acceptance of an obliterated evidence location.
- Restored through acceptance of a found perpetuated location.
- Determined to be lost and re-established through proportionate methods.
- Show bearings and distances to PLSS corners used for proportioning, and show original distances).
- Restored/recovered/re-established in a location that differs from a previously established position.
- (Show difference in plan view below).
- Check here if addition information is shown on the reverse side of this form.

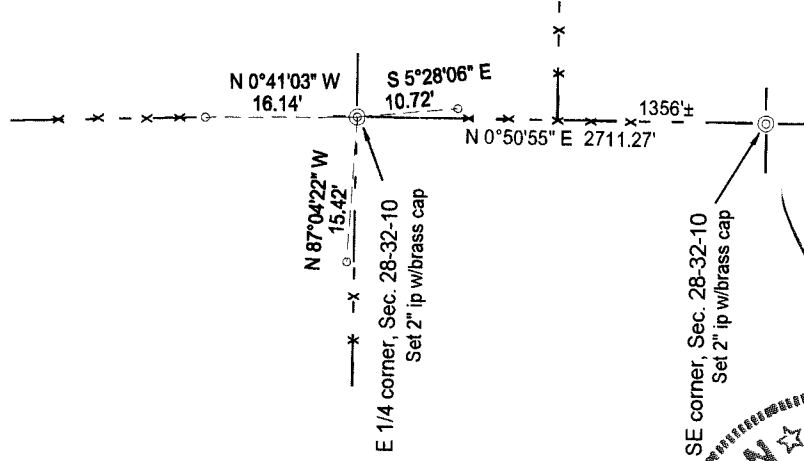
**Describe record evidence, recovered physical evidence, occupational evidence, testimonial evidence and all other evidence considered in the recovery/restoration of the corner.**

The original corner was established in 1860 by Hiram Fellows. Original bearing trees: birch, 12", S44°E, 12 links and a hemlock, 8", S79° W, 10 links. In 1910, E.S. Brooks surveyed in Section 27 and described this corner as "... 1/4 P. Orig BT gone. Old stake. Set new cedar stake & pine stp. 26", S22°E, 96 links". 07/31/00 I found no original or other evidence of the corner, but after measuring the East line of Section 28, I accept the location of the fence intersection (now gone) as the best evidence of the original corner location.

**Physical description of the monument set:**

For the corner, I set a new, 2" x 30" galvanized, flanged bottom iron pipe with a 3 1/4" brass cap, top of which is 0.7' below ground as farm equipment drive over this point to get into the adjoining fields.

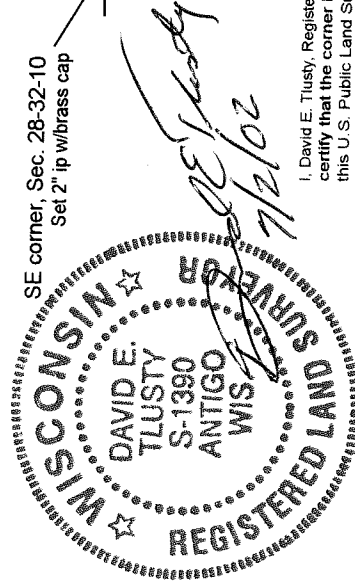
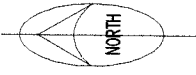
**Describe the accessories used to perpetuate the corner. Include a plan view drawing and accessories found/set. Describe measuring point on bearing trees. Show any topographic features that would aid in future recovery of the corner.**



**LEGEND**

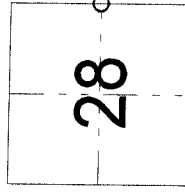
- 3/4" x 30" rebar set
  - Ties measured with GPS (1cm accuracy).
- Bearings are Langlade County  
Coordinate system grid bearings.

Field book: FB18-37



I, David E. Tlusty, Registered Land Surveyor, as Langlade County Surveyor, certify that the corner location on this record was determined by me and that this U.S. Public Land Survey Monument Record is correct to the best of my knowledge and belief.

Index No. T13 32-10



○ = corner perpetuated  
The East Quarter  
corner of Section 28,  
T. 32 N., R. 10 E.,  
Langlade County, WI