

LANGLADE COUNTY U.S. PUBLIC LAND CORNER RESTORATION

The South Quarter corner of Section 28, T. 32 N., R. 10 E., Langlade County, WI.

Corner was: (check all that apply)

3210280020

- Restored through acceptance of an obliterated evidence location.
- Restored through acceptance of a found perpetuated location.
- Determined to be lost and re-established through proportionate methods.
- Show bearings and distances to PLSS corners used for proportioning, and show original distances).
- Restored/recovered/re-established in a location that differs from a previously established position.
- (Show difference in plan view below).
- Check here if additional information is shown on the reverse side of this form.

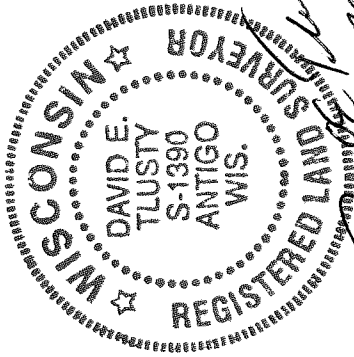
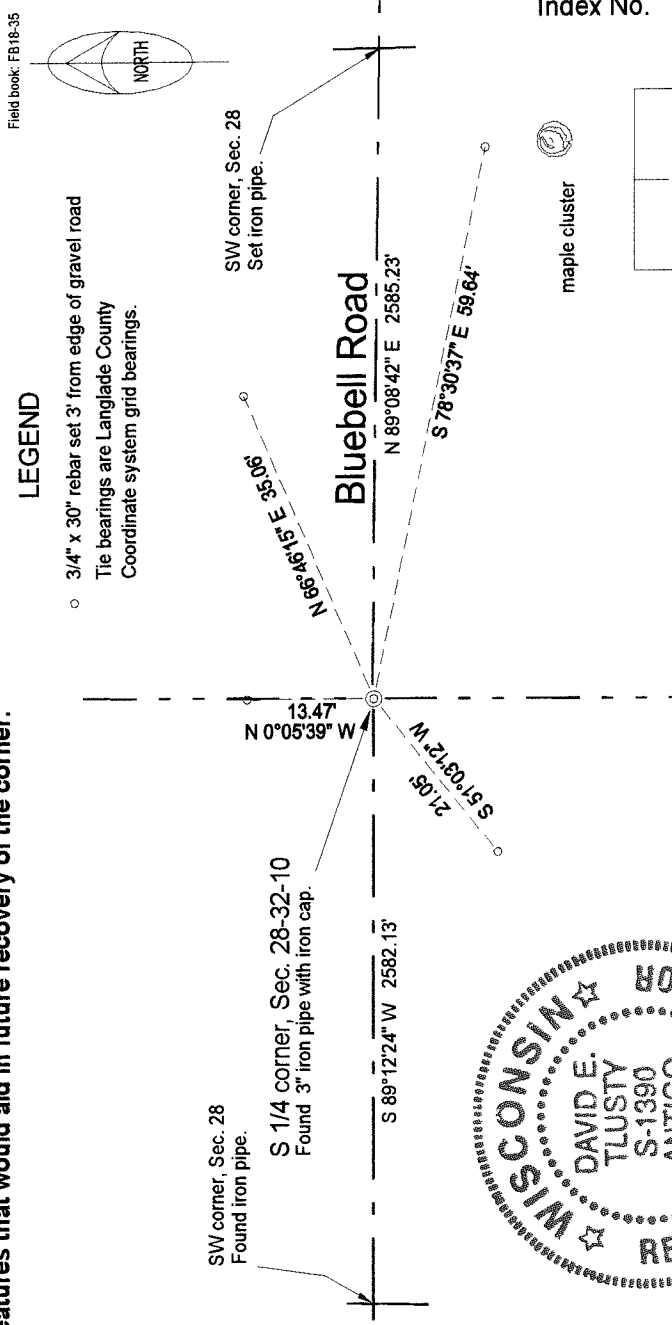
Describe record evidence, recovered physical evidence, occupational evidence, testimonial evidence and all other evidence considered in the recovery/restoration of the corner.

The original corner was established in 1860 by Hiram C. Fellows. Original bearing trees: tamarac, 17", S45°E, 6 links; and a tamarac, 6", N04°W, 6 links. In 1916, Hutchinson surveyed the South line of Section 28, but didn't say anything about this corner. In 1986, Wm. Kelly "Located iron in road set by Hutchinson in the 1930's". He "Set wit. mon. & marked BT's". On July 27, 2000 I found Kelly's pipe (1" x 10") down 0.2'. Set temporary ties and removed pipe. At 1.5' down, found a 3" iron pipe with iron cap. This pipe has a rectangular plate bolted to the bottom and is exactly the same as pipes found last year on five of the corners of Section 9 in this township that I know were set by Hutchinson. I accept the old pipe as a corner set by Hutchinson and as the best evidence. I dug down and straightened it, the top is now 1.5' below the road surface. Kelly didn't dig out the monument, just got a good buzz on the top end. His pipe was found S47°W, 2.25' from the straightened position of Hutchinson's monument.

Physical description of the monument set:

I straightened and reset the existing 3" iron pipe with iron cap, top of which is now 1.5' below the gravel road surface.

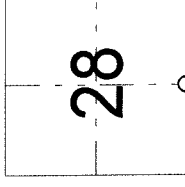
Describe the accessories used to perpetuate the corner. Include a plan view drawing and accessories found/set. Describe measuring point on bearing trees. Show any topographic features that would aid in future recovery of the corner.



David E. Tlusty
July 2, 2002

Index No. _____

V11 32-10



O = corner perpetuated
The South Quarter
corner of Section 28,
T. 32 N., R. 10 E.,
Langlade County, WI

I, David E. Tlusty, Registered Land Surveyor, as Langlade County Surveyor, certify that the corner location on this record was determined by me and that this U.S. Public Land Survey Monument Record is correct to the best of my knowledge and belief.