

U.S. PUBLIC LAND SURVEY MONUMENT RECORD

4321027 2020

Corner was: (check all that apply)
 Prepared and as required by S. A-E 7.08 W/ Administrative Code

- Restored through acceptance of an obliterated evidence location
- Restored through acceptance of a found perpetuated location
- Determined to be lost and reestablished through proportionate methods.
(Show bearings and distances to PLSS corners used for proportioning)
- Restored/recovered/reestablished in a location that differs from a previously established position. (Show difference in plan view below.)
- Check here if additional information is shown on the reverse side of this form

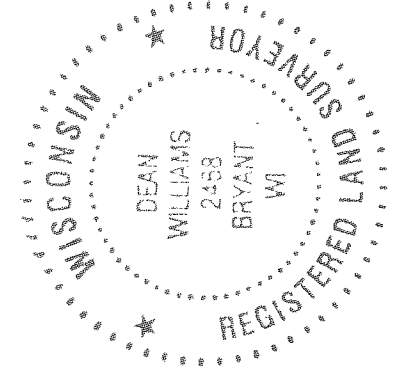
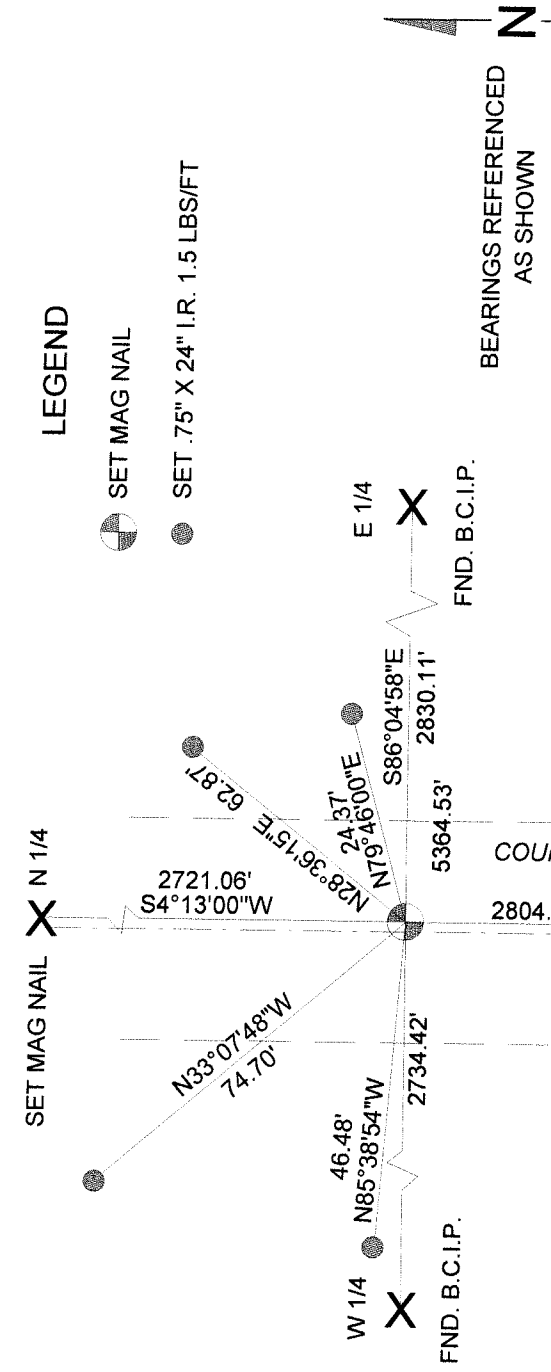
Describe record evidence, recovered physical evidence, occupational evidence, testimonial evidence and all other evidence considered in the recovery/restoration of corner.

2012 - DEAN WILLIAMS AND JAMES GARDNER SET CORNER AT INTERSECTION OF 1/4 LINES.

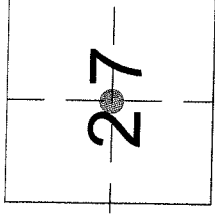
Physical description of the monument set:

2012 - Dean A. Williams and James Gardner set MAG NAIL AND TIED TO WITNESS RODS.

Describe the accessories used to perpetuate the location of the corner. Include a plan view drawing and indicate accessories found/set. Describe measuring point on bearing trees. Show any topographic features that would aid in future recovery of the corner.



The Center 1/4 corner of Section 27 T.32N., R.10E., Langlade County, WI



● = Location of corner

INDEX NO. T15 32-10

I, Dean A. Williams RLS 2468, certify that the corner location shown on this record was determined by me or under my direction and control and that this U.S. Public Land Survey Record is correct and complete to the best of my knowledge and belief.

Dean Williams 10/30/2012
Signature Date