

LANGLADE COUNTY U.S. PUBLIC LAND CORNER RESTORATION

The East Quarter corner of Section 27, T. 32 N., R. 10 E., Langlade County, WI.

Corner was: (check all that apply)

- Restored through acceptance of an obliterated evidence location.
- Restored through acceptance of a found perpetuated location.
- Determined to be lost and re-established through proportionate methods.
- Show bearings and distances to PLSS corners used for proportioning, and show original distances).
- Restored/recovered/re-established in a location that differs from a previously established position.
- (Show difference in plan view below).
- Check here if additional information is shown on the reverse side of this form.

43210272000

Describe record evidence, recovered physical evidence, occupational evidence, testimonial evidence and all other evidence considered in the recovery/restoration of the corner.

The original corner was established in 1860 by Hiram Fellows. Original bearing trees: ash, 6", S42°W, 15 links and an ash, 6", S61°E, 5 links. In 1910, E.S. Brooks surveyed in Section 27 and found the original SW ash standing. He measured north, 2669.04' to the section corner and west, 2819.5' to the center of Section 27. I measure the same distances as 2675.71' and 2830±, which are longer by approximately the same difference. 12/21/92 Tom Arnott found a PK nail and replaced it with a RR spike. 09/12/02 D. Tlusty found Arnott RR spike 2" under new pavement. Removed RR spike and at 1.5' down, I found a very old 1" iron pipe in old roadbed. My distances North and West agree within reason of Brooks'. I found other pipe in this township (4 in Section 14) that I know were set by Brooks and are the same size (1") as this one found. I accept the pipe as found as the best evidence of the original corner location.

Physical description of the monument set:

For the corner, I topped the existing iron pipe found with a new, 2" x 19" galvanized, flanged bottom iron pipe with a 3 1/4" brass cap flush with the road surface.

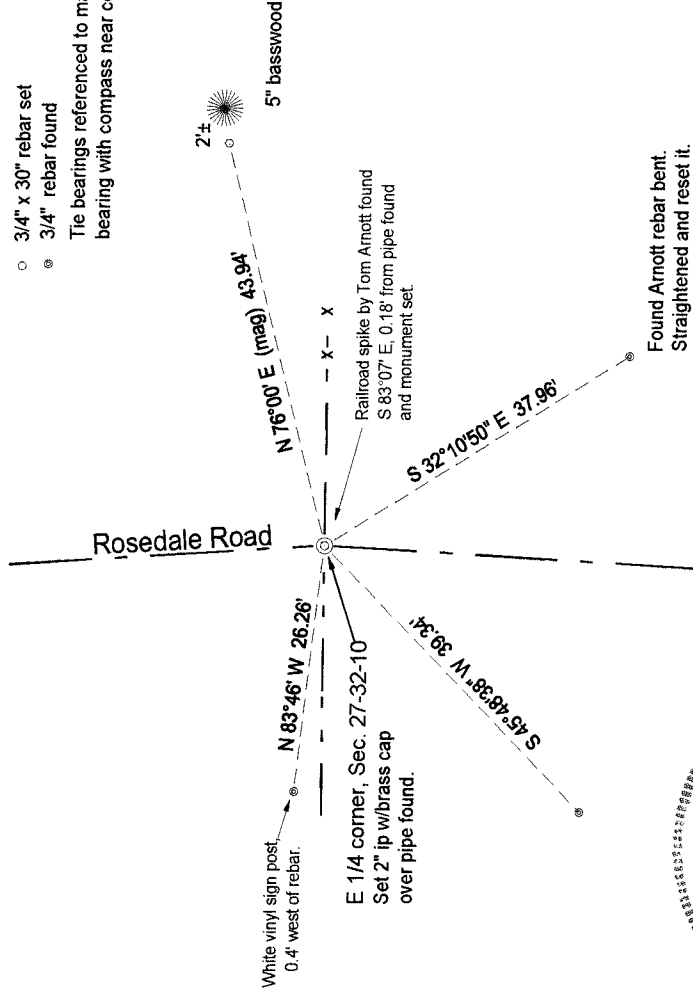
Describe the accessories used to perpetuate the corner. Include a plan view drawing and accessories found/set. Describe measuring point on bearing trees. Show any topographic features that would aid in future recovery of the corner.

Field book: FB18-89

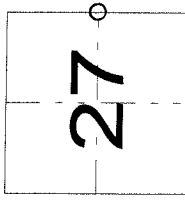


LEGEND

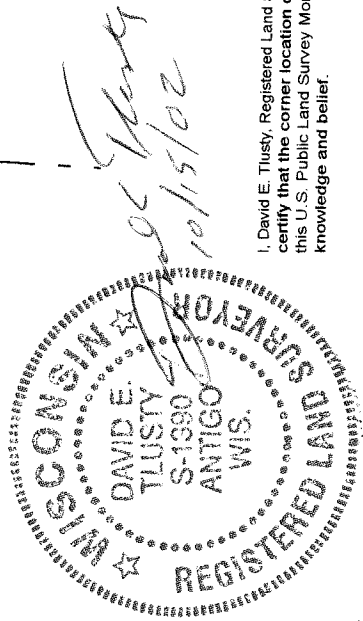
- 3/4" x 30" rebar set
- ⊙ 3/4" rebar found
- Tie bearings referenced to magnetic bearing with compass near corner.



Index No. T17 32-10



○ = corner perpetuated
The East Quarter corner of Section 27, T. 32 N., R. 10 E., Langlade County, WI



I, David E. Tlusty, Registered Land Surveyor, as Langlade County Surveyor, certify that the corner location on this record was determined by me and that this U.S. Public Land Survey Monument Record is correct to the best of my knowledge and belief.