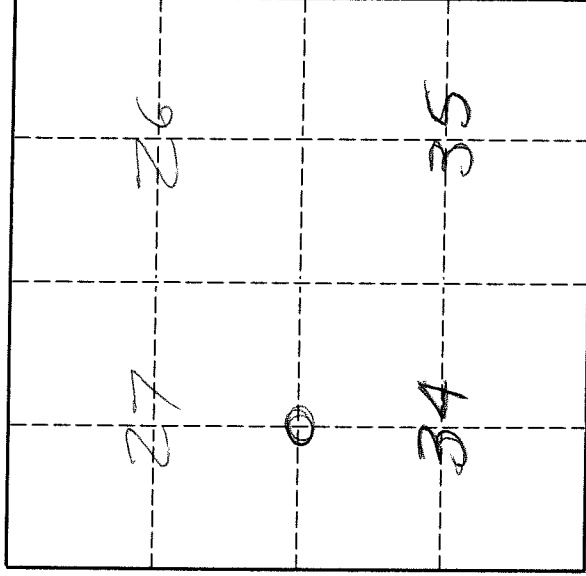


U. S. PUBLIC LAND SURVEY MONUMENT RECORD

INSTRUCTIONS:

This record shall show the location of the corner and shall include all of the following nine elements (a through i).

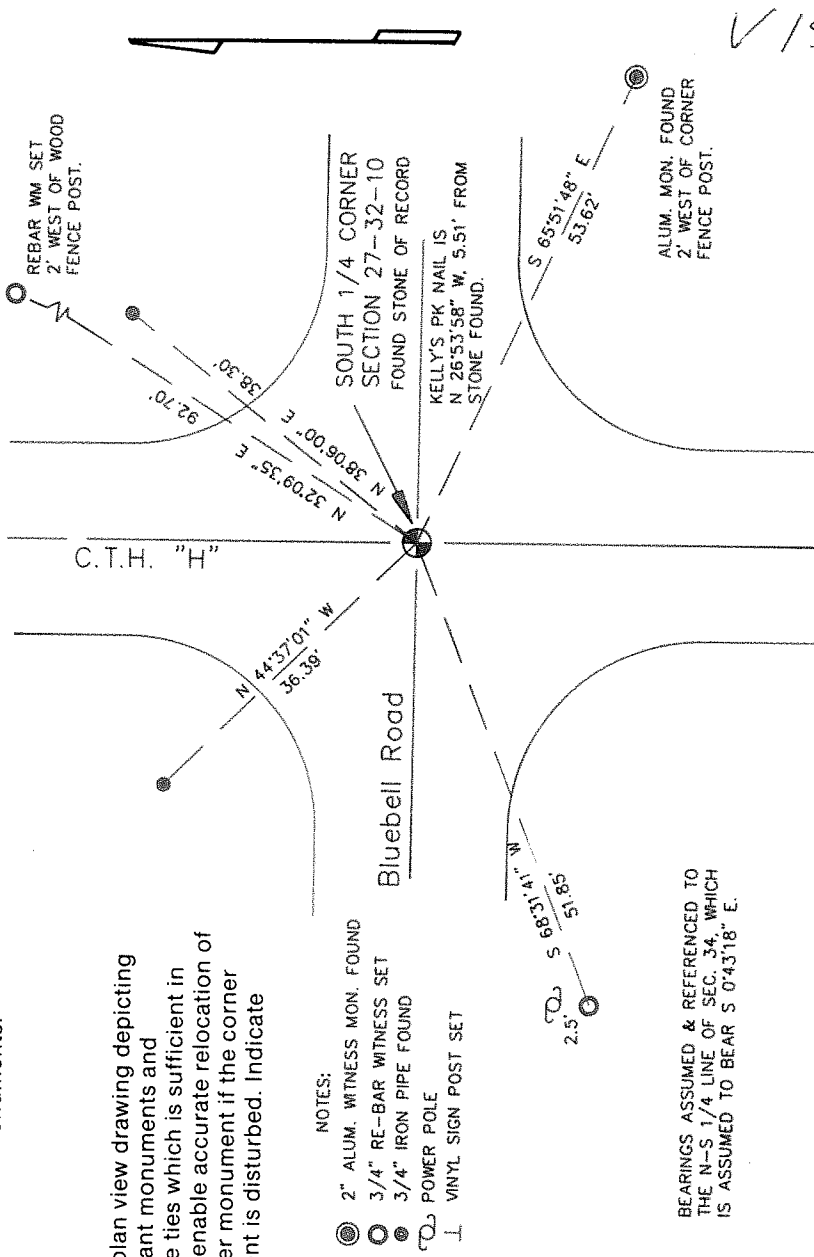
- (a) Identify the corner by reference to the U.S. public land survey system.
 O = Corner monument restored.



The South Quarter corner of Section 27, Township 32 North, Range 10 East, Langlade County, Wisconsin.

T. 32 N., R. 10 E.

- (b) Describe any record evidence, monument evidence, occupational evidence, testimonial evidence or any other material evidence you considered, and whether the monument was found or placed.
 The original corner was established in 1860 by Hiram C. Fellows. Original BT's: fir, 10", S48 E, 20 lks., and a sugar, 8", N59°W, 28 lks. In 1895 notes, B.F.Dorr called the corner a gray boulder, 8" x 10" x 20" + on top. In 1921, Webley did a subdivision survey in Section 27 and called the corner a stone. In 1916, Hutchinson callsthe corner a stone, 8" x 10" x 12" with + on top. In 1990, former surveyor Kelly "Found iron under surface of road. Set PK nail over iron. Set 3" al. witness monument". 07/29/96 D. Tlusty, M. Keilcheski dug with backhoe and found grey boulder with X chiseled on top, 3.8' below road surface. Accepted stone as best evidence of the original corner location. Set 3/4" x 30" rebar on south side of stone found. Stone found is approx. 5' SE of Kellys corner. Didn't find any "iron" under Kellys' PK.
- (c) In the plan view drawing below, provide reference ties to at least 4 witness monuments, or, if the location is within a municipality, to at least 2 witness monuments. (Witness monuments shall be made of concrete, natural stone, iron or other equally durable material.)
 Describe witness monuments.



- (d) Show a plan view drawing depicting the relevant monuments and reference ties which is sufficient in detail to enable accurate relocation of the corner monument if the corner monument is disturbed. Indicate north.

- NOTES:
 (O) 2" ALUM. WITNESS MON. FOUND
 (●) 3/4" RE-BAR WITNESS SET
 (●) 3/4" IRON PIPE FOUND
 (T) POWER POLE
 (I) VINYL SIGN POST SET

BEARINGS ASSUMED & REFERENCED TO THE N-S 1/4 LINE OF SEC. 34, WHICH IS ASSUMED TO BEAR S 0°43'18" E.

