

U.S. PUBLIC LAND SURVEY MONUMENT RECORD

4321018 0020

HISTORY OF ORIGINAL CORNER ESTABLISHMENT AND SUBSEQUENT RESTORATION AND DESCRIPTION OF ANY RECORD, MONUMENT OCCUPATIONAL, TESTIMONIAL OR OTHER EVIDENCE CONSIDERED:

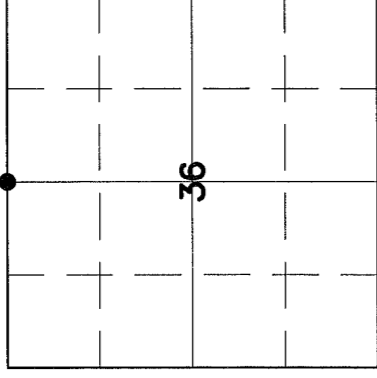
THE ORIGINAL CORNER WAS SET BY FELLOWS IN 1859. BEARING TREES WERE

5" FIR S15°W 15 LINKS

12" MAPLE N16°W 4 LINKS

KELLY SET THIS CORNER IN DEC 1988. HIGGINBOTHAM FOUND THE RR SPIKE THAT KELLY SET AND USED IT FOR VOL 7 CSM PG 87. THIS LOCATION AGREES WITH OCCUPAION AT THIS LOCATION AND ALSO THE 40 TO THE WEST. A SINGLE PROPTION WOULD MOVE THIS CORNER 29 FEET TO THE EAST.

● = LOCATION OF CORNER



SECTION 36

TOWNSHIP 32 NORTH, RANGE 9 EAST

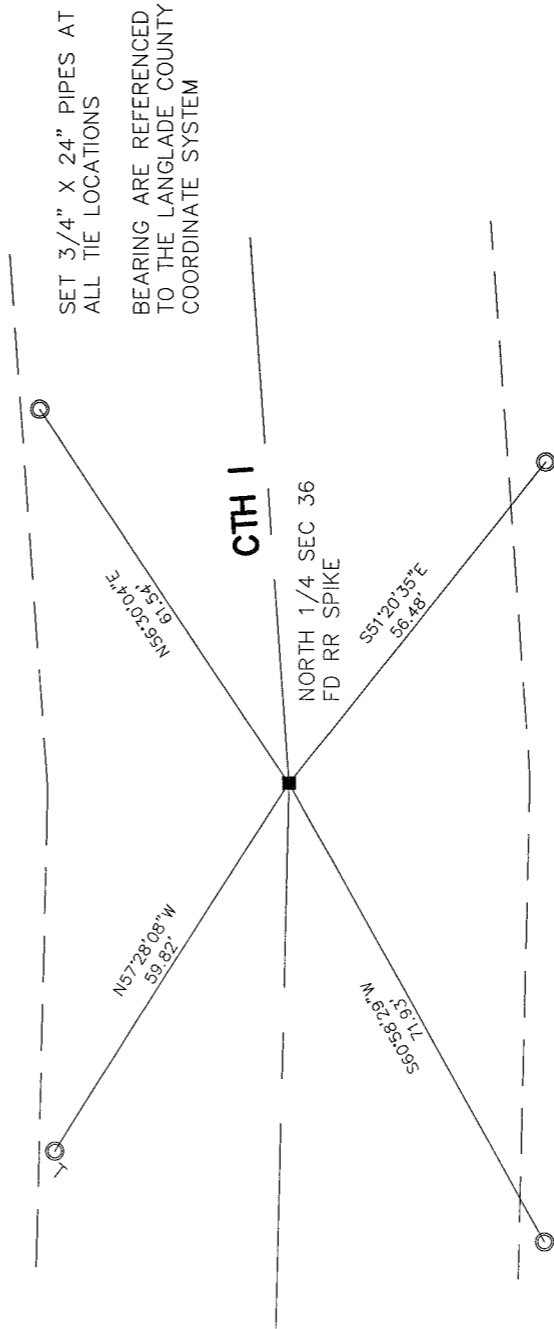
TOWN OF VILAS

LANGLADE COUNTY, WISCONSIN

CORNER WAS: (CHECK ALL THAT APPLY)

- RESTORED THROUGH ACCEPTANCE OF AN OBLITERATED EVIDENCE LOCATION
- RESTORED THROUGH ACCEPTANCE OF A FOUND PERPETUATED LOCATION
- CONSIDERED A LOST CORNER AND REESTABLISHED THROUGH LOST CORNER PROPORTIONATE METHODS (INCLUDE A PLAN VIEW DRAWING SHOWING DISTANCES AND DIRECTIONS TO OTHER PUBLIC LAND SURVEY CORNERS USED FOR PROPORTIONING AND DETERMINING THE CORNER LOCATION)
- RESTORED OR REESTABLISHED IN A LOCATION THAT DIFFERS FROM A PREVIOUS RESTORATION OR REESTABLISHMENT (INCLUDE A PLAN VIEW DRAWING AND INDICATE WHAT WAS SET AND/OR FOUND)
- CHECK IF THERE IS ADDITIONAL INFORMATION ON BACK

DESCRIBE THE MONUMENT AND ACCESSORIES USED TO PERPETUATE THE LOCATION OF THE CORNER. (INCLUDE A PLAN VIEW DRAWING AND INDICATE WHAT WAS SET AND/OR FOUND) ALSO INCLUDE FOUR TIES TO THE SECTION CORNER AND DESCRIPTION OF THE TIES.



SET 3/4" X 24" PIPES AT ALL TIE LOCATIONS

BEARING ARE REFERENCED TO THE LANGLADE COUNTY COORDINATE SYSTEM

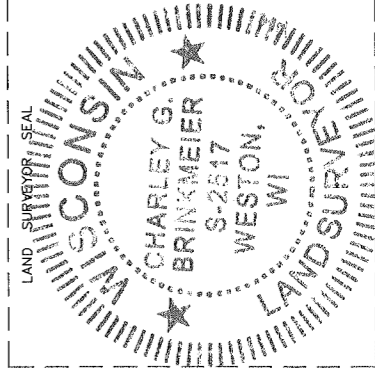
CHARLEY G. BRINKMEIER

(Type or print name) CERTIFY THAT THE CORNER LOCATION SHOWN ON THIS RECORD WAS DETERMINED BY ME OR UNDER MY DIRECTION AND CONTROL AND THAT THIS U.S. PUBLIC LAND SURVEY MONUMENT RECORD IS CORRECT AND COMPLETE TO THE BEST OF MY KNOWLEDGE AND BELIEF.

Chy [Signature] SIGNATURE

11-28-09

DATE



123 32-09 INDEX NO.