

U.S. PUBLIC LAND SURVEY MONUMENT RECORD

(Prepared and as required by S. A-E 7.08 WI Administrative Code)

The South 1/4 corner of Section 25, T. 32 N., R. 10 E., Langlade County, WI

Corner was: (check all that apply)

- Restored through acceptance of an obliterated evidence location.
- Restored through acceptance of a found perpetuated location.
- Determined to be lost and re-established through proportionate methods.
(Show bearings and distances to PLSS corners used for proportioning.)
- Restored/recovered/reestablished in a location that differs from a previously established position. (Show difference in plan view below.)

- Check here if additional information is shown on the reverse side of this form.

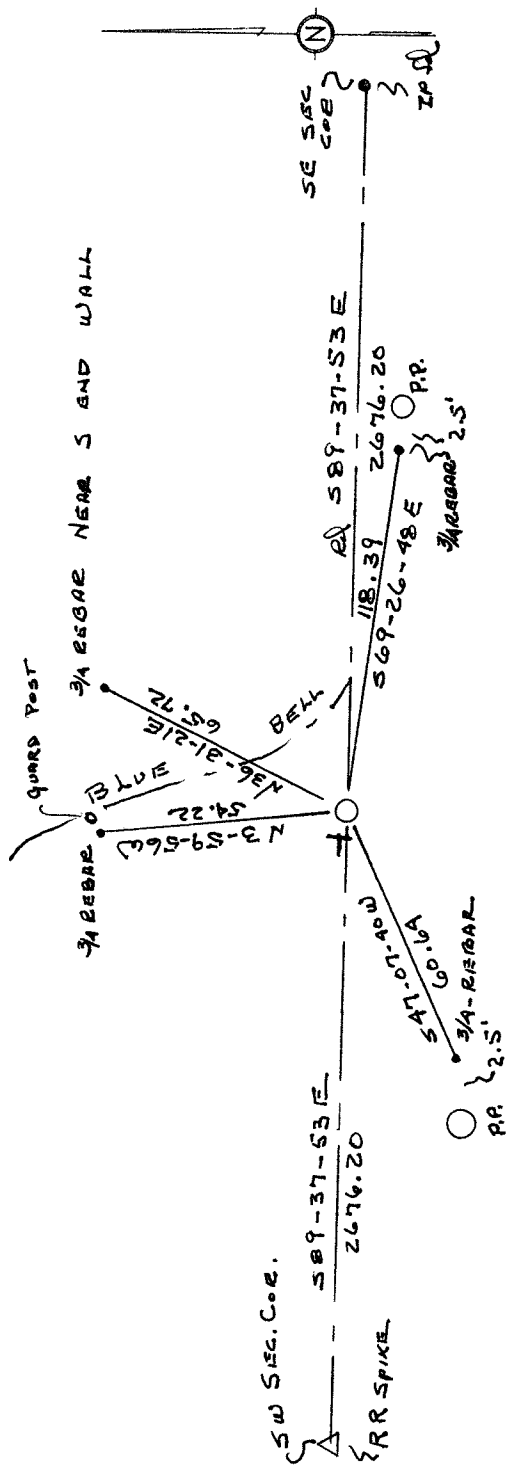
Describe record evidence, recovered physical evidence, occupational evidence, testimonial evidence and all other evidence considered in the recovery/restoration of the corner.

No evidence found. A large ditch had been dug just to the west of the corner location. I single proportioned the corner between the SW sec. cor. and the SE sec. cor. Hutchinson set corner in 1906 from a single proportionate method. His distance was 2668.38 feet for the half mile.

Physical description of the monument set:

Set a 1" iron pipe 30" long with a 2" aluminum cap.

Describe the accessories used to perpetuate the location of the corner. Include a plan view drawing and indicate accessories found/set. Describe measuring point on bearing trees. Show any topographic features that would aid in future recovery of the corner.



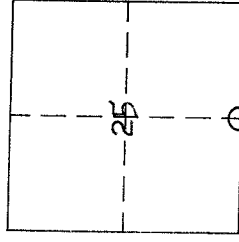
The S 1/4

SURVEYORS SEAL

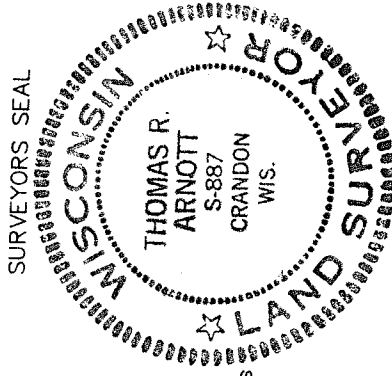
corner of Section 25

T. 32 N., R. 10 E.
Langlade County, WI

INDEX No. V23



○ = Location of corner



I, Thomas R. Arnott, certify that the corner location shown on this record was determined by me or under my direction and control and that this U.S. Public Land Survey Monument Record is correct and complete to the best of my knowledge and belief.

Thomas R. Arnott 30 Dec 96
Signature Date