

LANGLADE COUNTY U.S. PUBLIC LAND CORNER RESTORATION

The Southeast corner of Section 25, T. 32 N., R. 10 E., Langlade County, WI.

Corner was: (check all that apply)

43210250000

- Restored through acceptance of an obliterated evidence location.
- Restored through acceptance of a found perpetuated location.
- Determined to be lost and re-established through proportionate methods.
- Show bearings and distances to PLSS corners used for proportioning, and show original distances).
- Restored/recovered/re-established in a location that differs from a previously established position.
- (Show difference in plan view below).
- Check here if additional information is shown on the reverse side of this form.

Describe record evidence, recovered physical evidence, occupational evidence, testimonial evidence and all other evidence considered in the recovery/restoration of the corner.

The original corner was established in 1859 by Hiram Fellows. Original bearing trees: elm, 12", S16°W, 30 links; birch, 20", N81°E, 13 links; maple, 10", N52°W, 31 links, and a sugar, 8", S49°E, 29 links. In 1896 Dorr described this corner: "found (?) from ogl stumps". Dorr measured from this corner 2676.96' (I get 2676.52') to the 1/4 corner to the North and 3412.86' (I get 3413.1±') to the 1/4 corner to the East. In 1902, Webley measured 2649.24' (I get 2651.67') to the 1/4 corner to the South. In 1906, Brooks described the corner as "stake set by Dorr". In 1967, Robert Poss shows this corner on the subdivision plat of Eau Claire Acres, but didn't describe the corner. In 1989, former surveyor Kelly "located 1" iron pipe in centerline set by M. Hutchinson". 09/12/02 D. Tlusty found Kellys pipe in road. I can't find any notes of Hutchinsons to support Kellys statement, but it appears that this location fits the old survey work in the area so I accept it as the best evidence of the corner.

2015 UPDATE →

Physical description of the monument set:

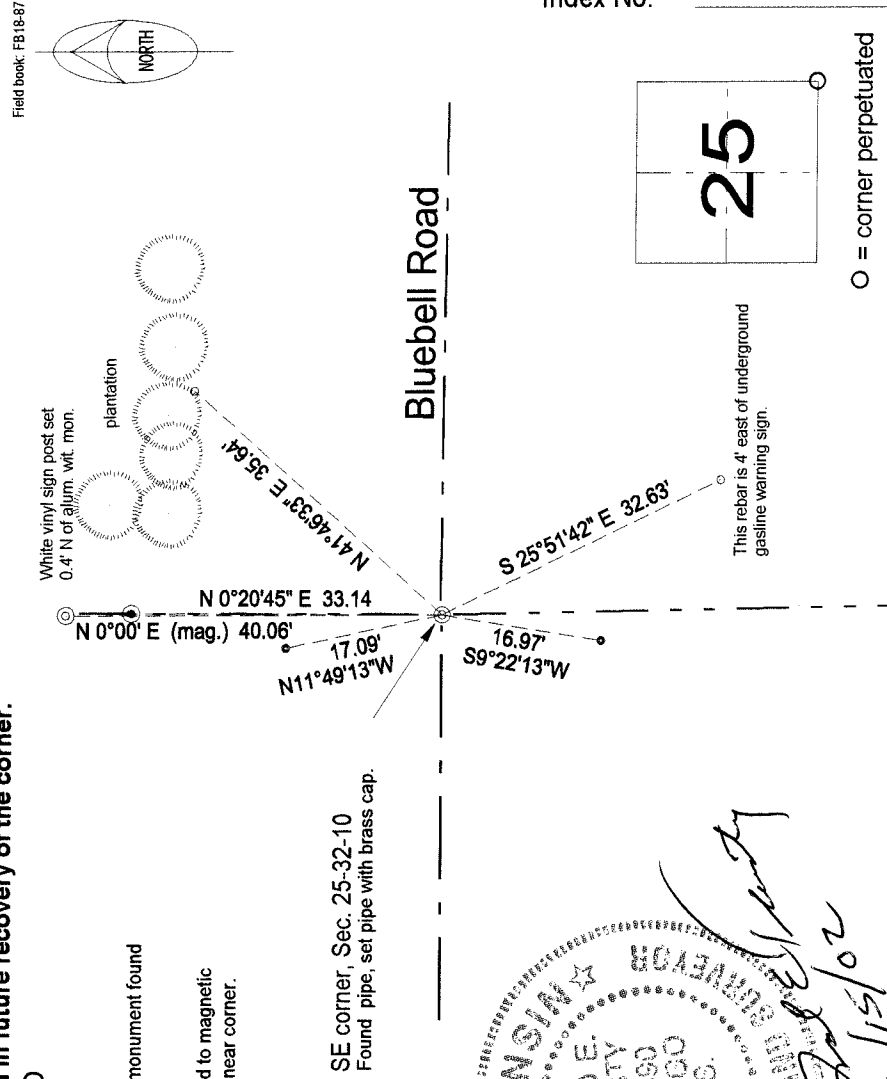
I removed the existing pipe and replaced it with a 2" x 30" galvanized, flanged bottom iron pipe with a 3 1/4" brass cap set flush with the road surface.

Describe the accessories used to perpetuate the corner. Include a plan view drawing and accessories found/set. Describe measuring point on bearing trees. Show any topographic features that would aid in future recovery of the corner.

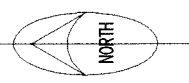
LEGEND

- 3/4" x 30" rebar set
- 3/4" iron pipe found
- ⊙ 2" aluminum witness monument found
- ⊗ 2" iron pipe found

Tie bearings referenced to magnetic bearing with compass near corner.

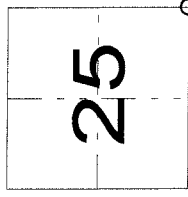


Field book: FB18-87



I, David E. Tlusty, Registered Land Surveyor, as Langlade County Surveyor, certify that the corner location on this record was determined by me and that this U.S. Public Land Survey Monument Record is correct to the best of my knowledge and belief.

Index No. V25 32-10



○ = corner perpetuated
The Southeast corner of Section 25, T. 32 N., R. 10 E., Langlade County, WI

07/16/2015 Maintenance update

7/16/15 D. Tlusty

D. Tlusty found 2" iron pipe in good condition flush with road. Brass cap missing (a neighbor stopped and told me that the brass cap was found a couple times off the pipe, in the roadway, so he placed the brass cap by the aluminum witness monument to the north. I then retrieved the brass cap.)

As this road is slated for grinding and resurfacing in the near future, I checked that the ties are still in place and added additional ties as noted:

- Found PK nail in West side of power pole, south, 29.82 feet
- Found PK nail in West side of power pole, north, 32.77 feet
- Set aluminum nail in NE side of spruce, 11", NW, 34.54 feet
- Set aluminum nail in NW side of poplar, 4", NE, 31.15 feet
- Averaging 3 - 33 epoch RTK observations, Langlade Co. Coordinates - NAD83(2011) datum - results:
 - N 369292.32
 - E 613343.64
 - H 1520.4 (NAVD88 elevation derived from Geoid12a applied to GPS observations)

8/31/15 D. Tlusty
SET CH. SPIKE IN NEW PAIT ASUM AB OLE SHOUT TIES.
RE-OBSERVED NEW SPIKE RTK GPS:
369292.36 614083 (E011)
613343.67
1520.5