

4321024 0000

U.S. PUBLIC LAND SURVEY MONUMENT RECORD

(Prepared and as required by S. A-E 7.08 WI Administrative Code)

The NORTHEAST corner of Section 25, T. 32 N., R. 10 E., Langlade County, WI
Corner was (check all that apply)

- Restored through acceptance of an obliterated evidence location.
- Restored through acceptance of a found perpetuated location.
- Determined to be lost and re-established through proportionate methods. (show bearings and distances to PLSS corners used for proportioning.)
- Restored/recovered/re-established in a location that differs from a previously established position. (Show difference in plan view below.)
- Check here if additional information is shown on the reverse side of this form.

Describe record evidence, recovered physical evidence, occupational evidence, testimonial evidence, and all other evidence considered in the recovery/restoration of the corner.

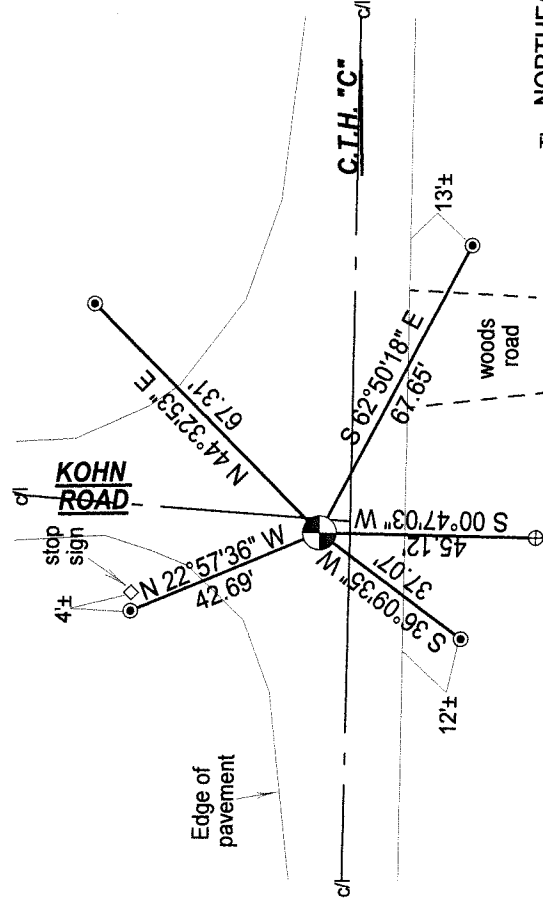
- Original - June 1859, H.C. Fellows set corner post and marked Bearing Trees, Ash 12", S 55° W, 5 links, Maple 12", N 64° W, Ash 15", N 73° E, 19 links, Ash 12", S 79° E, 12 links.
- 1989 - Surveyor Kelly located 1 1/4" iron pipe 14" below road surface. Kelly set a railroad spike over pipe, and set four new ties, and prepared tie sheet.
- 1993 - Surveyor Arnott dug with backhoe and found a bent over iron pipe 1.5' below pavement. Arnott set railroad spike after road was patched, set four ties, and prepared tie sheet.
- 2011- I found no evidence of the corner or accessories due to road re-construction.

Physical description of the monument set:

- 2011- Utilizing coordinates provided by County Surveyor Tlusty, I reset the corner at the same location as Tlusty. I set a Mag nail at the corner location. I set four new rebars as shown below.

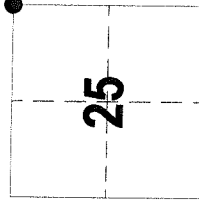
Describe the accessories used to perpetuate the location of the corner. Include a plan view drawing and indicate accessories found/set. Describe measuring point on bearing trees. Show any topographic features that would aid in future recovery of the corner.

BEARINGS REFERENCED TO THE LANGLADE COUNTY COORDINATE SYSTEM GRID.



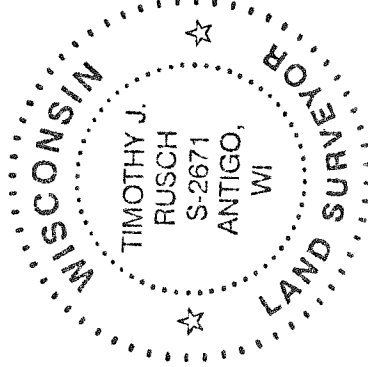
The NORTHEAST
Corner of Section 25
T. 32 N., R. 10 E.
Langlade County, WI

⊙ = Set 0.75" x 30" long rebar



● = Location of corner

SURVEYORS SEAL



I, Timothy J. Rusch certify that the corner location shown on this record was determined by me or under my direction and control and that this U.S. Public Land Survey Monument Record is correct and complete to the best of my knowledge and belief.

Timothy J. Rusch 05/24/2011
Signature Date