

LANGLADE COUNTY U.S. PUBLIC LAND CORNER RESTORATION

The East Quarter corner of Section 22, T. 32 N., R. 10 E., Langlade County, WI.

Corner was: (check all that apply)

- Restored through acceptance of an obliterated evidence location.
- Restored through acceptance of a found perpetuated location.
- Determined to be lost and re-established through proportionate methods.
- Show bearings and distances to PLSS corners used for proportioning, and show original distances).
- Restored/recovered/re-established in a location that differs from a previously established position.
- (Show difference in plan view below).
- Check here if additional information is shown on the reverse side of this form.

43210222000

Describe record evidence, recovered physical evidence, occupational evidence, testimonial evidence and all other evidence considered in the recovery/restoration of the corner.

The original corner was established in 1860 by Hiram Fellows. Original bearing trees: fir, 10", N63°E, 5 links and a fir, 8", S45°W, 6 links. In 1894, B.F. Dorr described the corner as a grey boulder, 6" x 6" x 22" with + on top. 09/24/02 D. Tlusty, M. Kielcheski dug with backhoe. Down 16" found granite stone, upright and solid. It is the only stone in the old road. ~~Top of it is 6" x 6". Accepted stone as the stone mentioned by Dorr and as the best evidence of the original corner location.~~

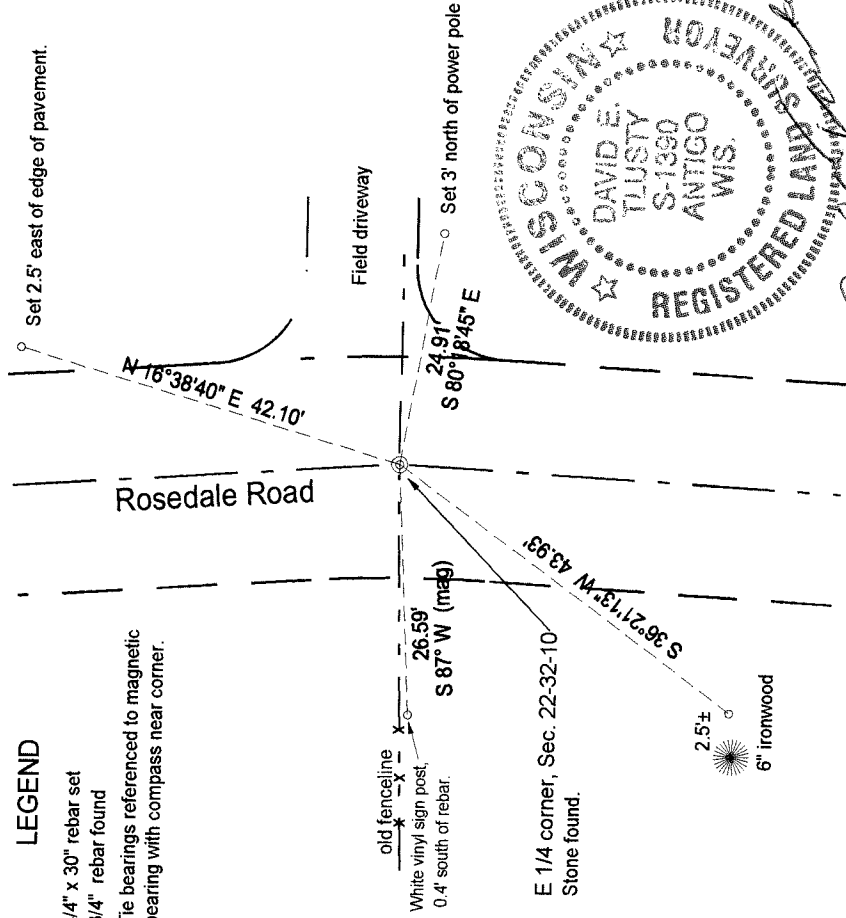
Physical description of the monument set:

I left the existing stone in place. 10/17/02 Set Bernitsen SN-1 nail in road patch, over stone found. Set a 1" x 30" iron pipe on the east edge of the stone.

Describe the accessories used to perpetuate the corner. Include a plan view drawing and accessories found/set. Describe measuring point on bearing trees. Show any topographic features that would aid in future recovery of the corner.

LEGEND

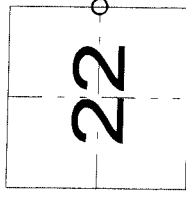
- 3/4" x 30" rebar set
- 3/4" rebar found
- Tie bearings referenced to magnetic bearing with compass near corner.



Field book: FB18-90



Index No. P17 32-10



○ = corner perpetuated
The East Quarter
corner of Section 22,
T. 32 N., R. 10 E.,
Langlade County, WI

I, David E. Tlusty, Registered Land Surveyor, as Langlade County Surveyor, certify that the corner location on this record was determined by me and that this U.S. Public Land Survey Monument Record is correct to the best of my knowledge and belief.