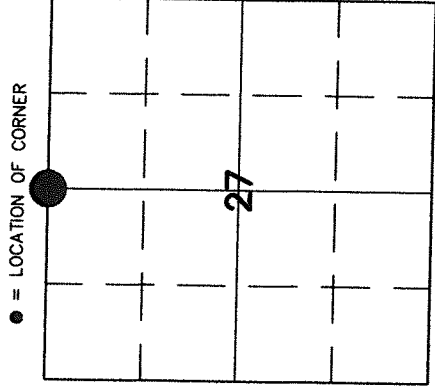


U.S. PUBLIC LAND SURVEY MONUMENT RECORD

43210220020

HISTORY OF ORIGINAL CORNER ESTABLISHMENT AND SUBSEQUENT RESTORATION AND DESCRIPTION OF ANY RECORD, MONUMENT OCCUPATIONAL, TESTIMONIAL OR OTHER EVIDENCE CONSIDERED:

THE ORIGINAL CORNER WAS ESTABLISHED IN 1860 BY FELLOWS. IN 1887 DORR CALLS FOR A PINE STUMP, 12" N27.5W, 75 LKS. IN 1895, DORR DESCRIBED THE CORNER AS A REDDISH BOULDER, 8"X12"X20" WITH + ON TOP. A 1910 RECORD MAKE REFERENCE TO A STONE AT THIS CORNER. IN 1990, KELLY FOUND RR SPIKE AT THE INTERSECTION OF CTH C AND CTH H. SET 3" ALUM. WITNESS MONUMENT. FOUND IRON BAR IN ROAD UNDER RR SPIKE. 06/11/96 D. TLUSTY FOUND REDDISH STONE 8"X12" WITH + 1.4' BELOW ROAD SURFACE. ACCEPTED AS DORR'S BOULDER AND AS BEST EVIDENCE OF ORIGINAL CORNER LOCATION AND AS BEST ON SOUTH EDGE OF STONE. 6/03 CTH C WAS RECONSTRUCTED. TLUSTY SET 60D NAIL IN THE ORIGINAL LOCATION OF THE STONE WITH GPS. WE RE-TIED TLUSTY'S 60D NAIL AS PART OF THE STAKING CONTRACT FOR CTH C



● = LOCATION OF CORNER

SECTION 27

TOWNSHIP 32 NORTH, RANGE 10 EAST

TOWN OF PECK

LANGLADE COUNTY, WISCONSIN

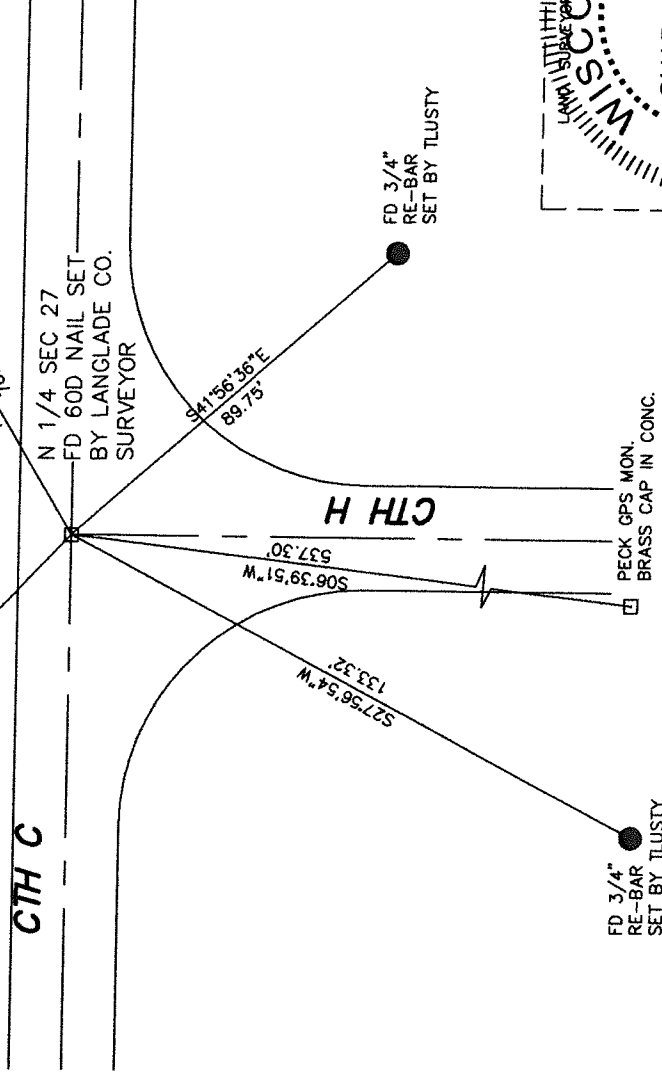
CORNER WAS: (CHECK ALL THAT APPLY)

- RESTORED THROUGH ACCEPTANCE OF AN OBLITERATED EVIDENCE LOCATION
- RESTORED THROUGH ACCEPTANCE OF A FOUND PERPETUATED LOCATION
- CONSIDERED A LOST CORNER AND REESTABLISHED THROUGH LOST CORNER PROPORTIONATE METHODS (INCLUDE A PLAN VIEW DRAWING SHOWING DISTANCES AND DIRECTIONS TO OTHER PUBLIC LAND SURVEY CORNERS USED FOR PROPORTIONING AND DETERMINING THE CORNER LOCATION)
- RESTORED OR REESTABLISHED IN A LOCATION THAT DIFFERS FROM A PREVIOUS RESTORATION OR REESTABLISHMENT (INCLUDE A PLAN VIEW DRAWING AND INDICATE WHAT WAS SET AND/OR FOUND)
- CHECK IF THERE IS ADDITIONAL INFORMATION ON BACK

DESCRIBE THE MONUMENT AND ACCESSORIES USED TO PERPETUATE THE LOCATION OF THE CORNER. (INCLUDE A PLAN VIEW DRAWING AND INDICATE WHAT WAS SET AND/OR FOUND) ALSO INCLUDE FOUR TIES TO THE SECTION CORNER AND DESCRIPTION OF THE TIES.

PP NO.
3210-22117 3'

○ = SET 3/4" RE-BARS

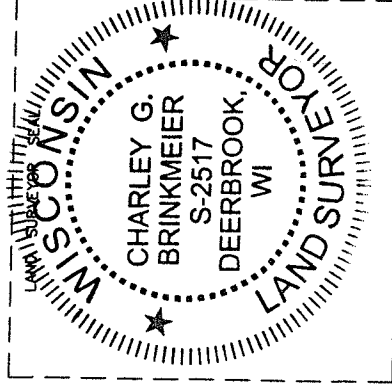


CHARLEY G. BRINKMEIER

(Type or Print Name) CERTIFY THAT THE CORNER LOCATION SHOWN ON THIS RECORD WAS DETERMINED BY ME OR UNDER MY DIRECTION AND CONTROL AND THAT THIS U.S. PUBLIC LAND SURVEY MONUMENT RECORD IS CORRECT AND COMPLETE TO THE BEST OF MY KNOWLEDGE AND BELIEF.

Charley Brinkmeier
SIGNATURE

7/27/03
DATE



R-15
32-10

INDEX NO.