

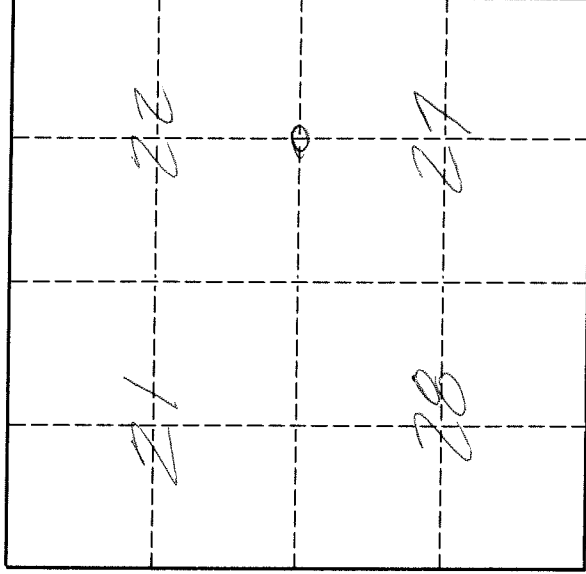
# U. S. PUBLIC LAND SURVEY MONUMENT RECORD

**I N S T R U C T I O N S:**

- (a) Identify the corner by reference to the U.S. public land survey system.  
 O = Corner monument restored.

South Quarter corner of Section 22, Township 32 North, Range 10 East, Langlade County, Wisconsin.

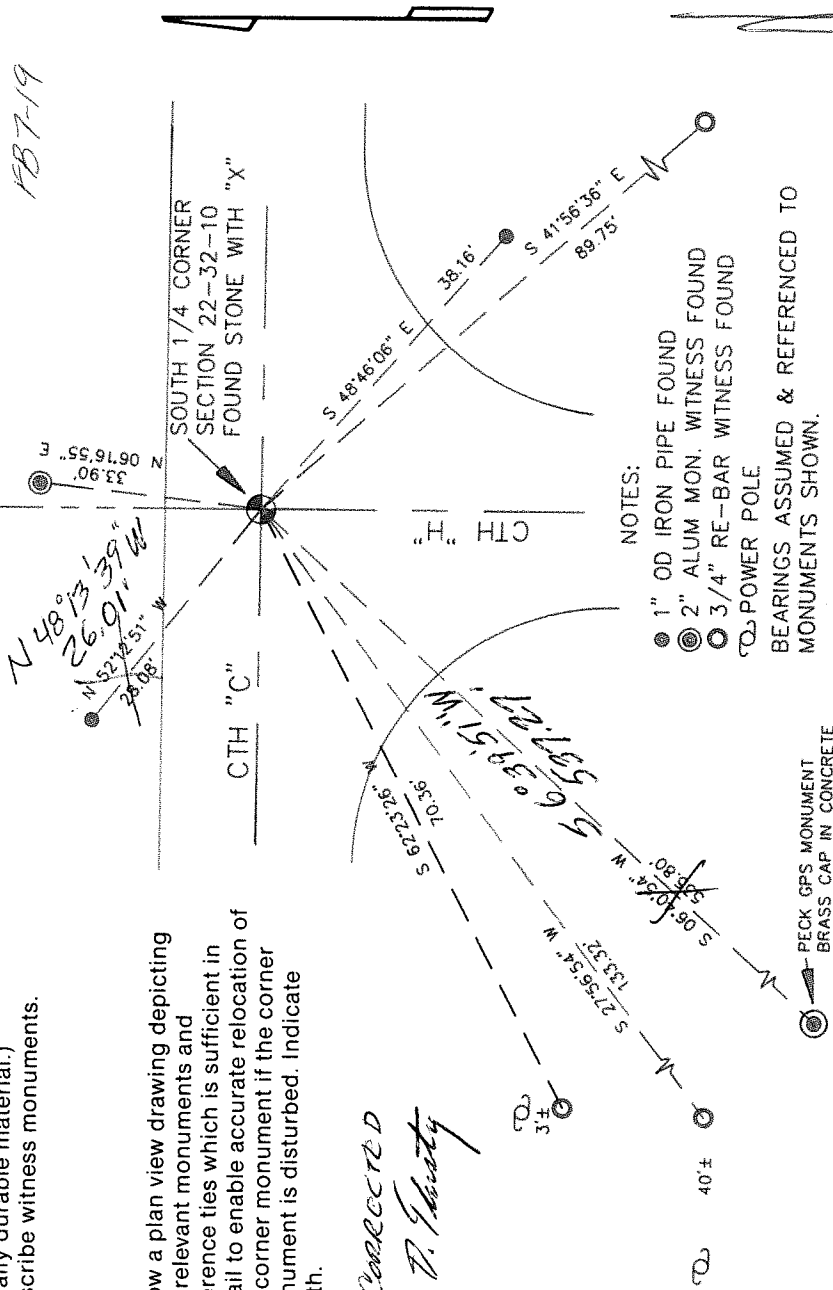
This record shall show the location of the corner and shall include all of the following nine elements (a through i).



T. 32 N., R. 10 E.

- (b) Describe any record evidence, monument evidence, occupational evidence, testimonial evidence or any other material evidence you considered, and whether the monument was found or placed.  
 The original corner was established in 1860 by H.C. Fellows. In 1887, B.F. Dorr calls for a pine stump, 12", N27½W, 75 lks. In 1895, Dorr described the corner as a reddish boulder, 8" x 12" x 20" with "+" on top. A 1910 record makes reference to a stone at this corner. In 1990, former surveyor Kelly "found R/R spike at intersection of Hwy C. and Hwy. H. Set 3" alum. witness monument. Found iron bar in road under R/R spike". 06/11/96 D. Tlusty, M. Keilcheski, I. Schmidt found and tied PK nail on surface. Dug with backhoe. Found reddish stone, approx. 8" x 12" with chiseled "X" on top, 1.4' below road. Accepted as Dorr's boulder and as the best evidence of the original corner location. Set 3/4" x 30" rebar on S. edge stone and RR spike on E. edge of stone. No evidence of Kellys iron bar.
- (c) In the plan view drawing below, provide reference ties to at least 4 witness monuments, or, if the location is within a municipality, to at least 2 witness monuments. (Witness monuments shall be made of concrete, natural stone, iron or other equally durable material.)  
 Describe witness monuments.

- (d) Show a plan view drawing depicting the relevant monuments and reference ties which is sufficient in detail to enable accurate relocation of the corner monument if the corner monument is disturbed. Indicate north.



Z TIES CORRECTED  
 2/17/2000 D. Tlusty

**NOTES:**

- 1" OD IRON PIPE FOUND
  - ⊕ 2" ALUM MON. WITNESS FOUND
  - ⊕ 3/4" RE-BAR WITNESS FOUND
  - ⊕ POWER POLE
- BEARINGS ASSUMED & REFERENCED TO MONUMENTS SHOWN.

⊕ PECK GPS MONUMENT  
 BRASS CAP IN CONCRETE

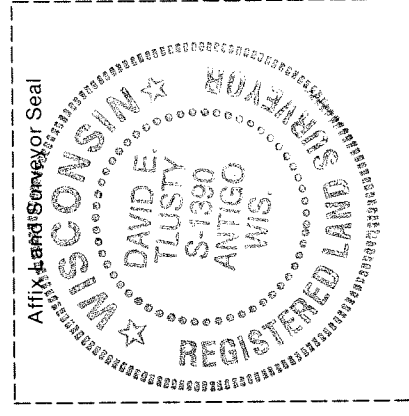
R15

Describe any material discrepancy between the location of the corner as restored or reestablished and the location of that corner as previously restored or reestablished by distance and direction. Show the discrepancy on the plan view drawing under (d), above. Show the distances between the corner as previously restored or reestablished and (1) the corner as restored or reestablished, and (2) to at least 2 of the witness monuments shown on the drawing in (d), above.

The stone of record found is N 20°41' W, 1.25' from Kellys erroneous corner.

- (f) Was the corner restored through acceptance of (1) an obliterated evidence location, or, (2) a found perpetuated location?  
A found perpetuated location.

- (g & h) Was the corner reestablished through lost corner proportionate methods? If so, show the method, including the directions and distances to other public land survey corners used as evidence or used for proportioning in determining the corner location.  
No.



- (i) I, David E. Tlusty, Langlade County Surveyor,  
(type or print name)

certify that the corner location shown on this record was determined by me or under my direction and control and that this U.S. Public Land Survey Monument Record is correct and complete to the best of my knowledge and belief.

David E. Tlusty 2/10/96  
Signature Date