

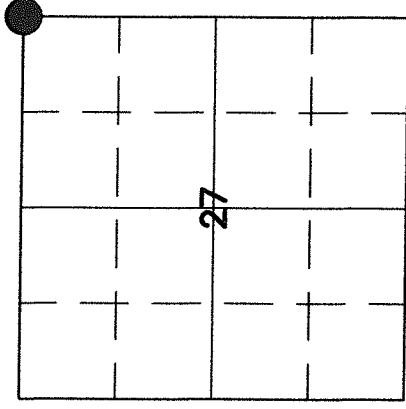
U.S. PUBLIC LAND SURVEY MONUMENT RECORD

4321022000

HISTORY OF ORIGINAL CORNER ESTABLISHMENT AND SUBSEQUENT RESTORATION AND DESCRIPTION OF ANY RECORD, MONUMENT OCCUPATIONAL, TESTIMONIAL OR OTHER EVIDENCE CONSIDERED:

THE ORIGINAL CORNER WAS SET BY FELLOWS IN 1860. BEARING TREES WERE 8" SPRUCE S30W 34 LNKS, 7" BIRCH N15E 17 LNKS. IN 1910 BROOKS FOUND A STONE IN THE ROAD SET A NEW TIE, ELM STE 7LKS. HUTCHINSON DID SOME WORK IN SECTION 27 IN 1920 BUT DOES NOT MENTION WHAT HE FOUND AT THIS LOCATION. THERE ARE NOTES THAT SOMEONE, POSSIBLY HUTCHINSON, DUG OUT THE STONE AND SET A IRON WEDGE 11" X 2" SOMEWHERE AROUND 1938. KELLY FOUND A PK NAIL OVER THE IRON IN 1990. TLUSTY SET A 60D NAIL IN THE LOCATION OF THE PK NAIL WITH GPS. WE RE-TIED TLUSTY'S 60D NAIL AS PART OF THE STAKING CONTRACT FOR CTH C.

● = LOCATION OF CORNER



SECTION 27

TOWNSHIP 32 NORTH, RANGE 10 EAST

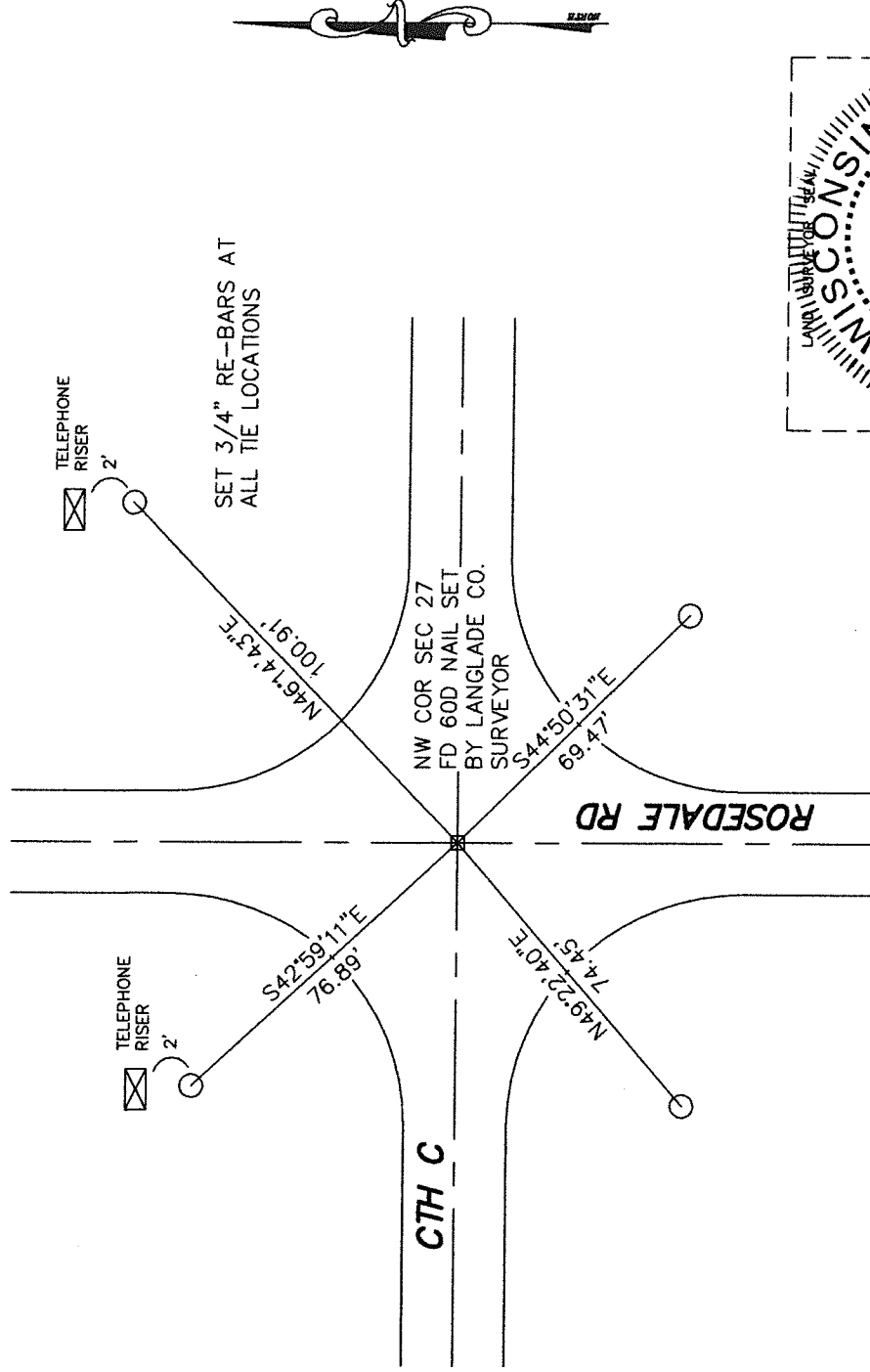
TOWN OF PECK

LANGLADE COUNTY, WISCONSIN

CORNER WAS: (CHECK ALL THAT APPLY)

- RESTORED THROUGH ACCEPTANCE OF AN OBLITERATED EVIDENCE LOCATION
- RESTORED THROUGH ACCEPTANCE OF A FOUND PERPETUATED LOCATION
- CONSIDERED A LOST CORNER AND REESTABLISHED THROUGH LOST CORNER PROPORTIONATE METHODS (INCLUDE A PLAN VIEW DRAWING SHOWING DISTANCES AND DIRECTIONS TO OTHER PUBLIC LAND SURVEY CORNERS USED FOR PROPORTIONING AND DETERMINING THE CORNER LOCATION)
- RESTORED OR REESTABLISHED IN A LOCATION THAT DIFFERS FROM A PREVIOUS RESTORATION OR REESTABLISHMENT (INCLUDE A PLAN VIEW DRAWING AND INDICATE WHAT WAS SET AND/OR FOUND)
- CHECK IF THERE IS ADDITIONAL INFORMATION ON BACK

DESCRIBE THE MONUMENT AND ACCESSORIES USED TO PERPETUATE THE LOCATION OF THE CORNER (INCLUDE A PLAN VIEW DRAWING AND INDICATE WHAT WAS SET AND/OR FOUND) ALSO INCLUDE FOUR TIES TO THE SECTION CORNER AND DESCRIPTION OF THE TIES.



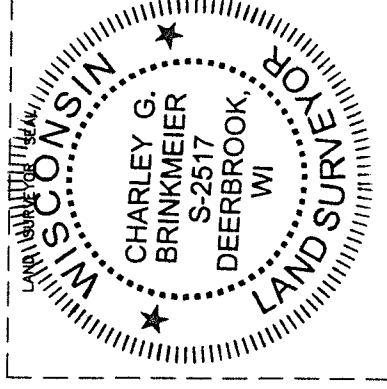
SET 3/4" RE-BARS AT ALL TIE LOCATIONS

CHARLEY G. BRINKMEIER

(Type or print name) CERTIFY THAT THE CORNER LOCATION SHOWN ON THIS RECORD WAS DETERMINED BY ME OR UNDER MY DIRECTION AND CONTROL AND THAT THIS U.S. PUBLIC LAND SURVEY MONUMENT RECORD IS CORRECT AND COMPLETE TO THE BEST OF MY KNOWLEDGE AND BELIEF.

Charley Brinkmeier
SIGNATURE

7/23/03
DATE



R 17
32-10

INDEX NO.