

U.S. PUBLIC LAND SURVEY MONUMENT RECORD

(Prepared and as required by S. A-E 7.08 WI Administrative Code)

43210212020

The Center corner of Section 21, T. 32 N., R. 10 E., Langlade County, WI
Corner was (check all that apply)

- Restored through acceptance of an obliterated evidence location.
- Restored through acceptance of a found perpetuated location.
- Determined to be lost and re-established through proportionate methods. (show bearings and distances to PLSS corners used for proportioning.)
- Restored/recovered/re-established in a location that differs from a previously established position. (Show difference in plan view below.)
- Check here if additional information is shown on the reverse side of this form.

Describe record evidence, recovered physical evidence, occupational evidence, testimonial evidence, and all other evidence considered in the recovery/restoration of the corner.

Corner was not originally established by GLO Survey.

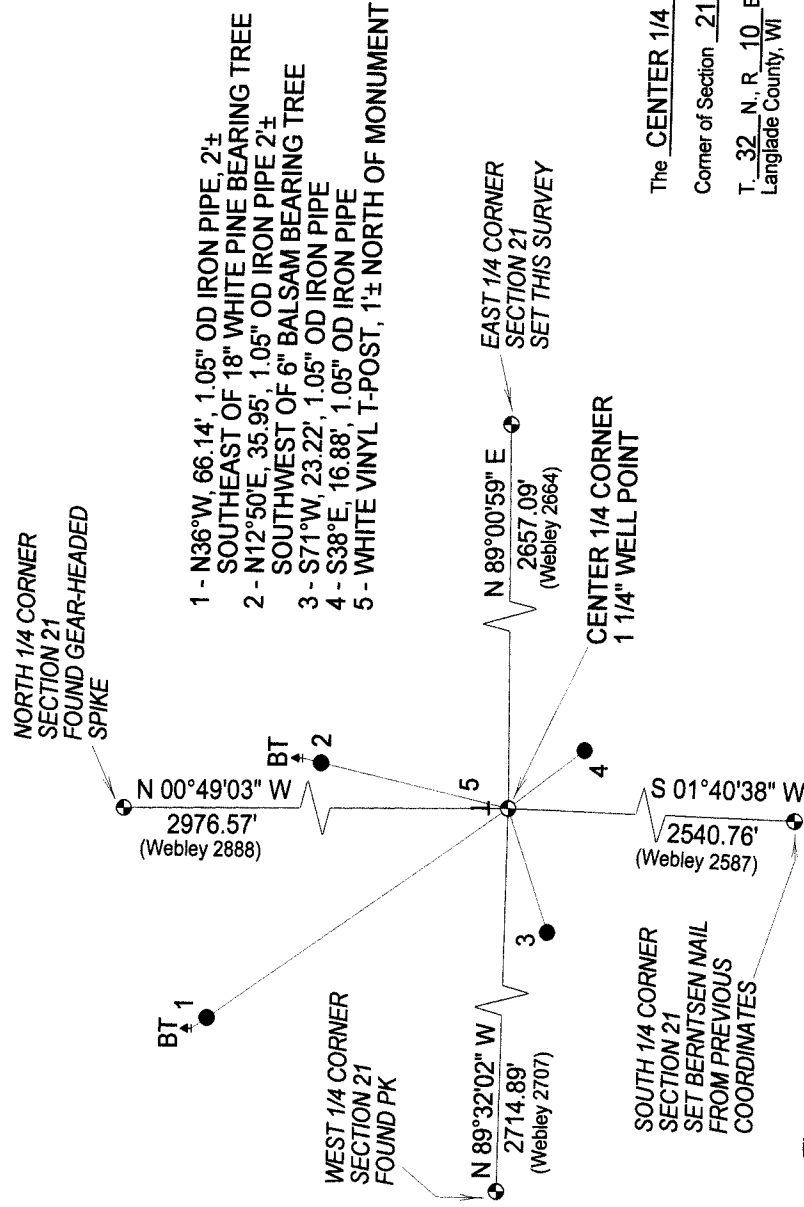
1921 - WC Webley (FB124 P91) Surveyed Section 21, setting a 1 1/4" X 4' pump point at the center. Webley indicated distances to the 1/4 corners - S. 39.20 ch, N 43.76 ch, W 41.01 ch, E 40.37 ch.

2006 - I found a 1 1/4" pipe. The distances to the E and W 1/4 corners matches Webley reasonably well, not so well to N and S 1/4 corners. The location matches well with the extension of a fence line running north from the S 1/4 corner. I accepted the found pipe as the Center 1/4 corner established by Webley.

Physical description of the monument set:

I found a 1 1/4" iron pipe.

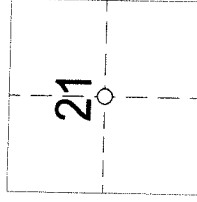
Describe the accessories used to perpetuate the location of the corner. Include a plan view drawing and indicate accessories found/set. Describe measuring point on bearing trees. Show any topographic features that would aid in future recovery of the corner.



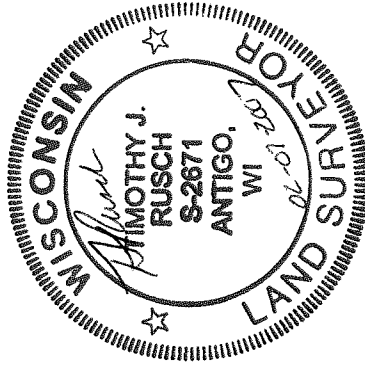
BEARINGS TO TIES REFERENCED MAGNETIC
 BEARINGS TO PLS CORNERS PER LANGLADE
 COUNTY COORDINATE GRID.

The Center 1/4
 Corner of Section 21
 T. 32 N., R. 10 E.
 Langlade County, WI

INDEX No. **P11** 32-10



○ = Location of corner



I, Timothy J. Rusch certify that the corner location shown on this record was determined by me or under my direction and control and that this U.S. Public Land Survey Monument Record is correct and complete to the best of my knowledge and belief.

Timothy J. Rusch 02-07-2007 Date
 Signature