

U.S. PUBLIC LAND SURVEY MONUMENT RECORD

(Prepared and as required by S. A-E 7.08 WI Administrative Code)

4321021 2000

The East 1/4 corner of Section 21 T. 32 N., R. 10 E., Langlade County, WI
Corner was (check all that apply)

- Restored through acceptance of an obliterated evidence location.
- Restored through acceptance of a found perpetuated location.
- Determined to be lost and re-established through proportionate methods. (show bearings and distances to PLSS corners used for proportioning.)
- Restored/recovered/re-established in a location that differs from a previously established position. (Show difference in plan view below.)
- Check here if additional information is shown on the reverse side of this form.

Describe record evidence, recovered physical evidence, occupational evidence, testimonial evidence, and all other evidence considered in the recovery/restoration of the corner.

Sept. 1860 - Corner originally set by H.C. Fellows: BTs -Tamarack 10", S26E, 9 links
 -Tamarack 10", N44W, 16 links

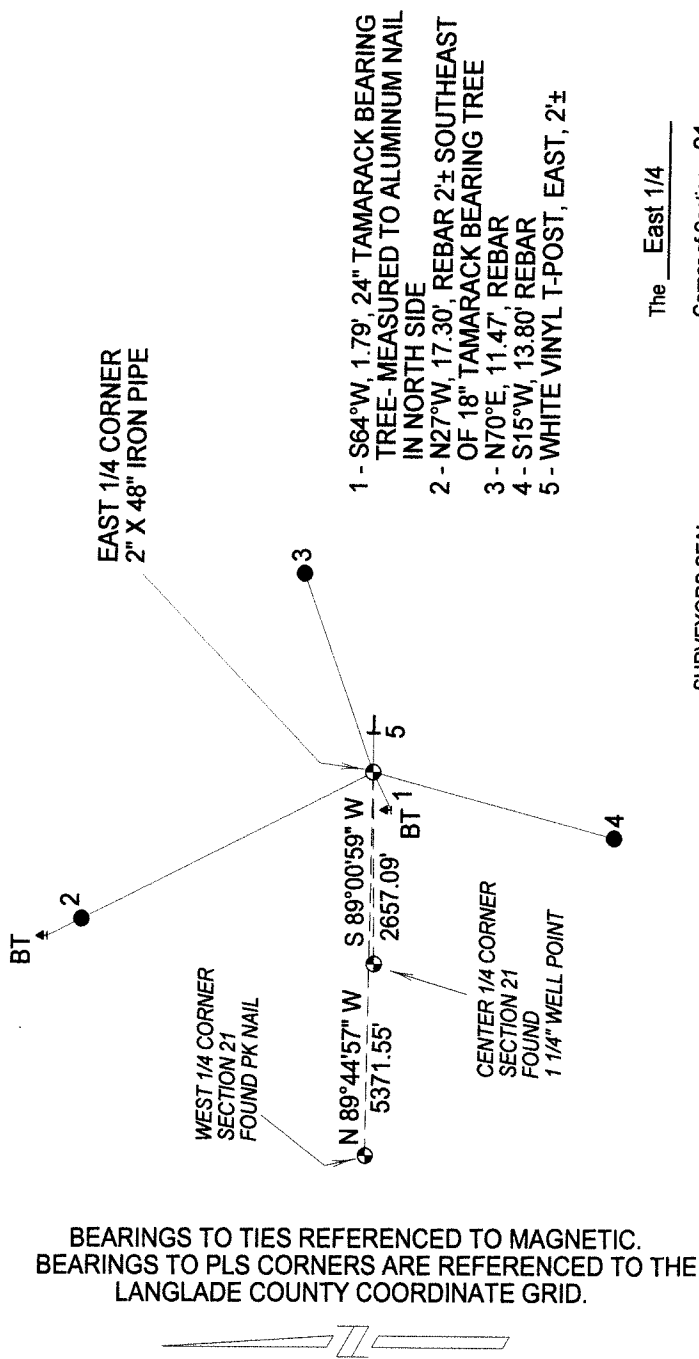
1921 - WC Webley (FB 124 P91) Surveyed Section 21, east from west 1/4, 81.38 chains to pipe. Webley also set a Center 1/4 corner 40.37 chains from the East 1/4 corner.

2006 - I found a fence corner with remnants of old fences running West, North, and South. Long-time resident Morris Wegner indicated this location as the corner. The distance to the West 1/4 corner and Webley's Center 1/4 check reasonably well. I accepted this location as the best perpetuation of the original corner location.

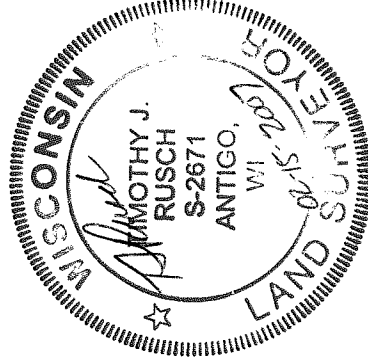
Physical description of the monument set:

I set a 2" X 48" iron pipe and ties as follows-

Describe the accessories used to perpetuate the location of the corner. Include a plan view drawing and indicate accessories found/set. Describe measuring point on bearing trees. Show any topographic features that would aid in future recovery of the corner.



SURVEYORS SEAL

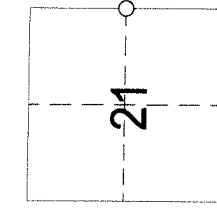


Timothy J. Rusch

I, Timothy J. Rusch certify that the corner location shown on this record was determined by me or under my direction and control and that this U.S. Public Land Survey Monument Record is correct and complete to the best of my knowledge and belief.

Timothy J. Rusch 02-15-2007
 Signature Date

The East 1/4 Corner of Section 21
 T. 32 N., R. 10 E.
 Langlade County, WI



INDEX No. **P13** 32-10

○ = Location of corner