

4321021 0020 1994

U. S. PUBLIC LAND SURVEY MONUMENT RECORD

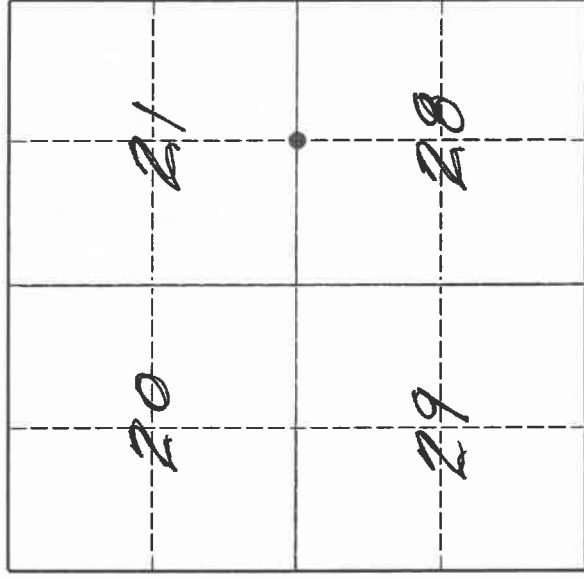
INSTRUCTIONS:

This record shall show the location of the corner and shall include all of the following nine elements (a through i).

- (a) Identify the corner by reference to the U.S. public land survey system.

● = Corner monument restored.

The South $\frac{1}{4}$ corner of Section 21, Township 32 North, Range 10 East, Langlade County, Wisconsin.

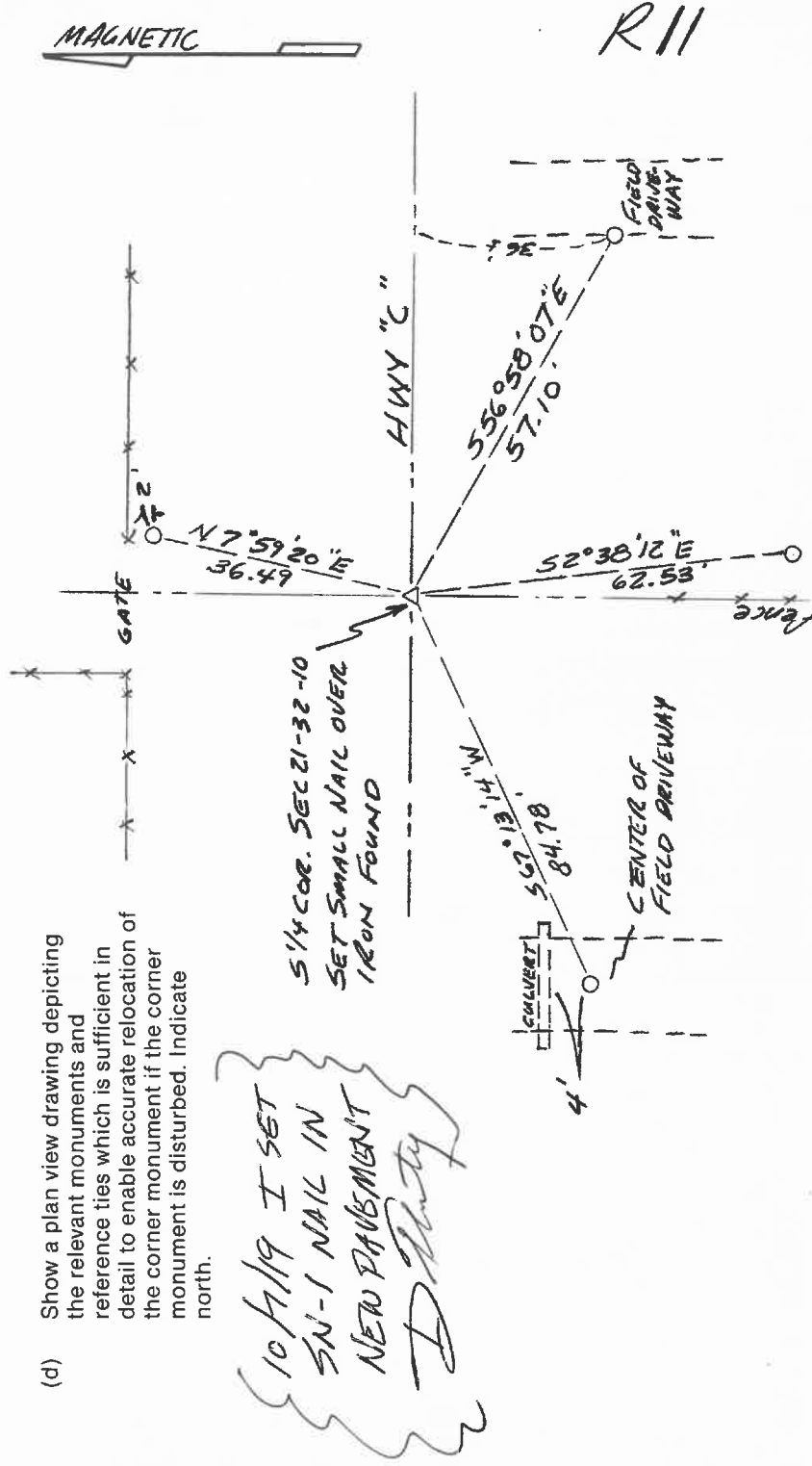


T. 32 N., R. 10 E.

- (b) Describe any record evidence, monument evidence, occupational evidence, testimonial evidence or any other material evidence you considered, and whether the monument was found or placed. The original corner was established in 1860 by H.C. Fellows. Original bearing trees were: Birch, 12", S42°E, 15 lks., and a fir, 6", N23°E, 9 lks. In 1922, W.C. Weibly set a stone for the corner (FB124-91). In 1926, Hutchinson marked a BT: tamarac stump, 15", S01°E, 73 lks. 07/12/94 D. Tlusty, M. Kielcheski dug with backhoe. At 2' south of the traveled centerline and in line with an old fence to the south and down 3.5 feet, found 1½" x 1" x 12" long "X" shaped, tapered piece of iron, upright in ground, with 3" x 5½" iron plate on top. Measured temporary ties to iron and removed it. Dug further. Found nothing. Accepted location of iron found as the best evidence of the corner location. This position fits Weibly's distances east-west.

- (c) In the plan view drawing below, provide reference ties to at least 4 witness monuments, or, if the location is within a municipality, to at least 2 witness monuments. (Witness monuments shall be made of concrete, natural stone, iron or other equally durable material.) Describe witness monuments.
 ○ = 3/4" x 30" re-bar set flush with ground for witness corner
 † = white vinyl sign post with "Survey Marker" sign set

- (d) Show a plan view drawing depicting the relevant monuments and reference ties which is sufficient in detail to enable accurate relocation of the corner monument if the corner monument is disturbed. Indicate north.

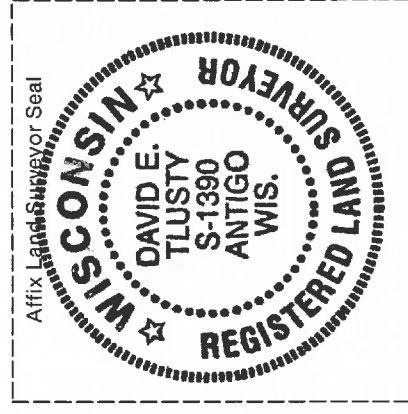


Describe any material discrepancy between the location of the corner as restored or reestablished and the location of that corner as previously restored or reestablished by distance and direction. Show the discrepancy on the plan view drawing under (d), above. Show the distances between the corner as previously restored or reestablished and (1) the corner as restored or reestablished, and (2) to at least 2 of the witness monuments shown on the drawing in (d), above.

No discrepancy.

- (f) Was the corner restored through acceptance of (1) an obliterated evidence location, or, (2) a found perpetuated location?
A found perpetuated location.

- (g & h) Was the corner reestablished through lost corner proportionate methods? If so, show the method, including the directions and distances to other public land survey corners used as evidence or used for proportioning in determining the corner location.
No.



- (i) I, David E. Tlusty, Registered Land Surveyor
(type or print name)

certify that the corner location shown on this record was determined by me or under my direction and control and that this U.S. Public Land Survey Monument Record is correct and complete to the best of my knowledge and belief.


Signature

July 18, 1994
Date