

43210210000

U.S. PUBLIC LAND SURVEY MONUMENT RECORD

(Prepared and as required by S. A-E 7.08 WI Administrative Code)

The NORTHWEST corner of Section 27, T. 32 N., R. 10 E., Langlade County, WI
Corner was (check all that apply)

- Restored through acceptance of an obliterated evidence location.
- Restored through acceptance of a found perpetuated location.
- Determined to be lost and re-established through proportionate methods. (show bearings and distances to PLSS corners used for proportioning.)
- Restored/recovered/re-established in a location that differs from a previously established position. (Show difference in plan view below.)
- Check here if additional information is shown on the reverse side of this form.

Describe record evidence, recovered physical evidence, occupational evidence, testimonial evidence, and all other evidence considered in the recovery/restoration of the corner.

Original - September 1860, H.C. Fellows set corner post and marked Bearing Trees, Fir 10", N 86° W, 9 links, and Aspen 12", N 38° E, 17 links.

1887 - B.F. Dorr marked new spruce bearing tree

1895 - B.F. Dorr called corner a boulder 10" x 18" x 22" with "x" on top.

1986 - Kelly stated corner was re-established from survey in Section 27, and set a Railroad Spike for corner location.

1994 - D. Tiusty found a granite boulder 40" below surface and accepted as perpetuated corner location. Tiusty set a nail over the boulder and set four rebar ties.

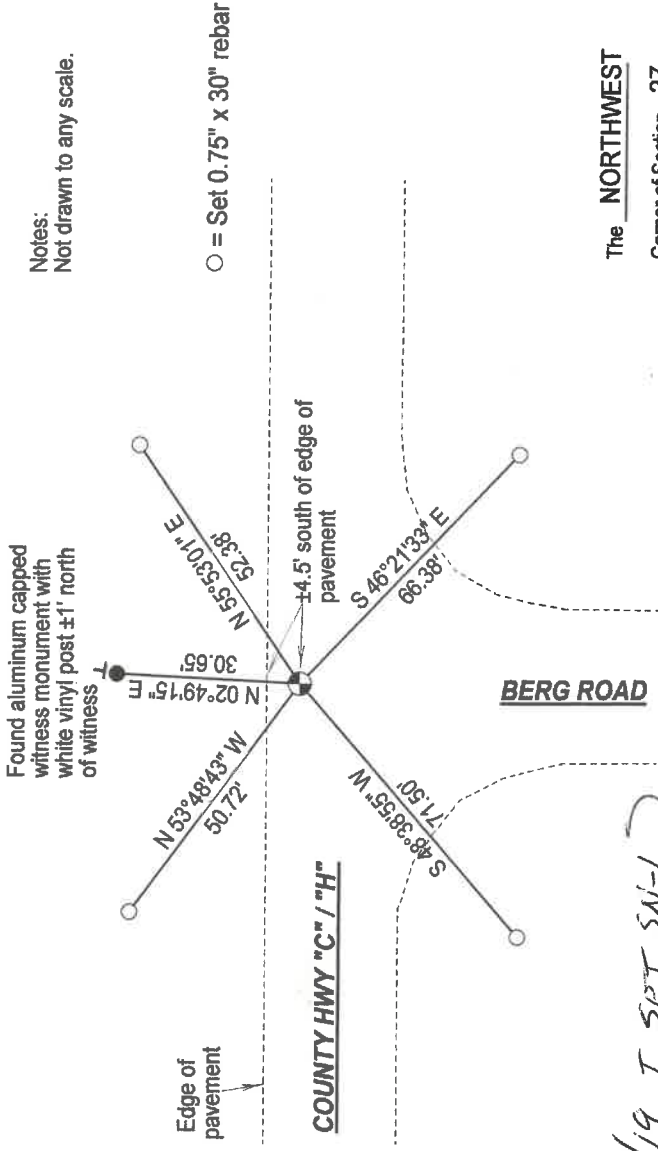
2008 - I found witness monument to the north. The other ties, as well as the nail set by Tiusty appear to have been removed by road re-construction.

Physical description of the monument set:

2008- Utilizing coordinates provided by Tiusty, and the remaining witness monument, I reset the corner at the same location as Tiusty. I set a Bemtsen SN-1 nail at the corner, approximately 4.5 feet south of the north edge of pavement of County Hwy. "C" and "H". I set four new rebars and retied the existing witness monument as shown below.

Describe the accessories used to perpetuate the location of the corner. Include a plan view drawing and indicate accessories found/set. Describe measuring point on bearing trees. Show any topographic features that would aid in future recovery of the corner.

BEARINGS REFERENCED TO THE LANGLADE COUNTY COORDINATE SYSTEM GRID.

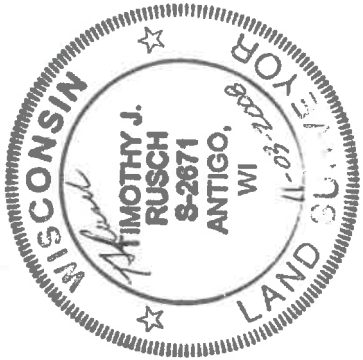
Notes:
Not drawn to any scale.

○ = Set 0.75" x 30" rebar

The NORTHWEST
Corner of Section 27
T. 32 N., R. 10 E.
Langlade County, WI

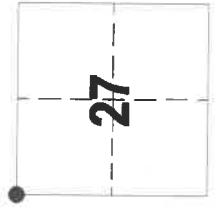
11/07/19 I SET SN-1 NAIL IN NEW PAVEMENT.
D. Tiusty

SURVEYORS SEAL



I, Timothy J. Rusch certify that the corner location shown on this record was determined by me or under my direction and control and that this U.S. Public Land Survey Monument Record is correct and complete to the best of my knowledge and belief.

Timothy J. Rusch
Signature 11-3-2008
Date



● = Location of corner