

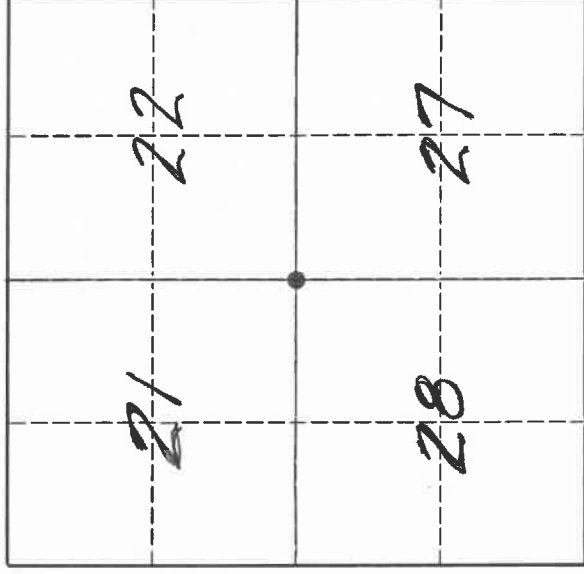
U. S. PUBLIC LAND SURVEY MONUMENT RECORD

I N S T R U C T I O N S:

This record shall show the location of the corner and shall include all of the following nine elements (a through i).

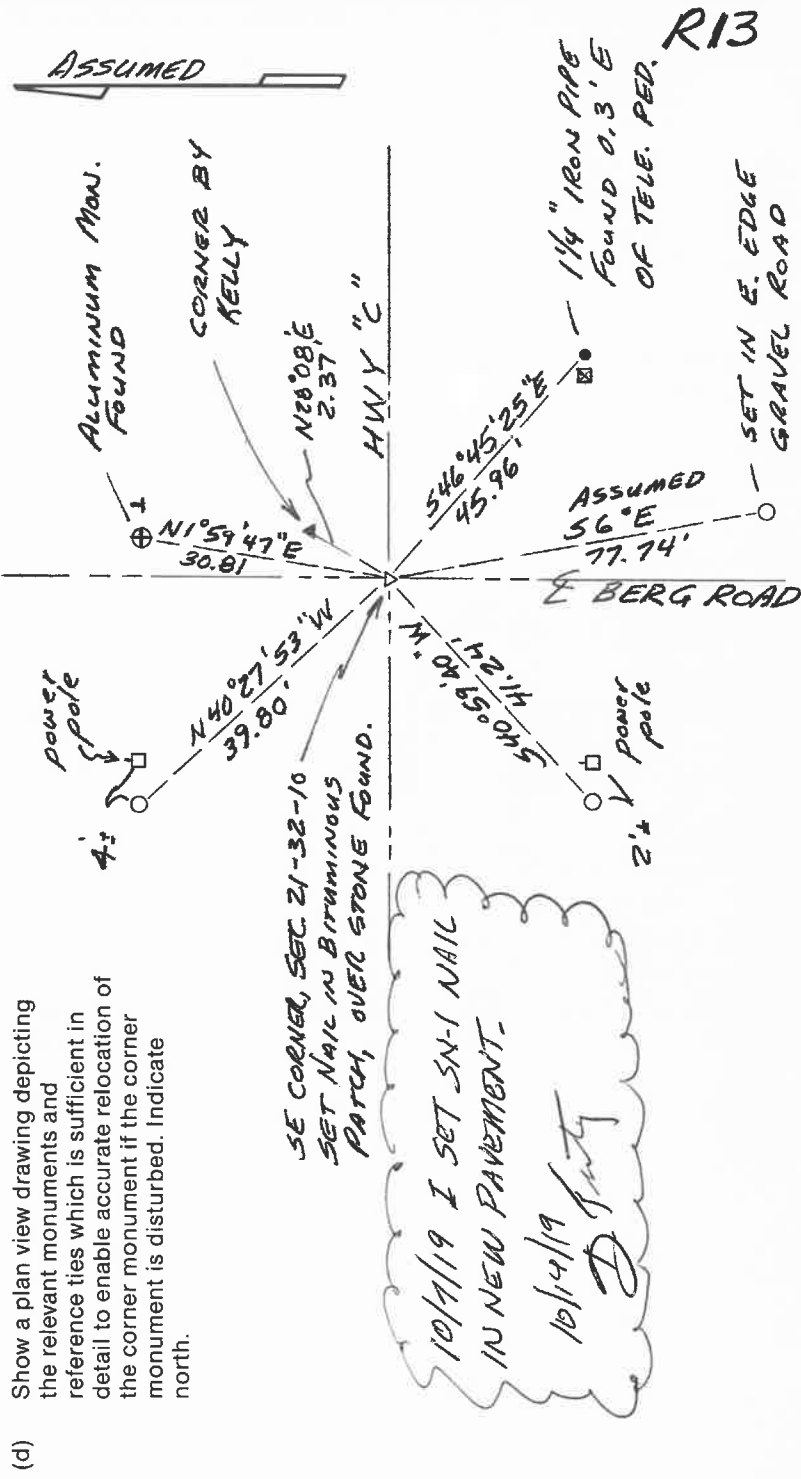
- (a) Identify the corner by reference to the U.S. public land survey system.
 ● = Corner monument restored.

The Southeast Corner of Section 21, Township 32 North, Range 10 East, Langlade County, Wisconsin.



T. 32 N., R. 10 E.

- (b) Describe any record evidence, monument evidence, occupational evidence, testimonial evidence or any other material evidence you considered, and whether the monument was found or placed.
 The original corner was established in 1860 by Hiram C. Fellows. Original bearing trees were fir, 10", N86°W, 9 lks., and aspen, 12", N38°E, 17 lks. In 1887, B.F. Dorr (FB140-48) stated "trees down" marked new spruce BT. In 1895, B.F. Dorr (FB97-162) called the corner a boulder 10" x 18" x 22" with "x" on top. 1982, former surveyor Kelly (map #30221) referred to corner as "assumed by occupation". In 1986, former surveyor Kelly stated that corner was re-established from survey in Section 27 and resident witness, James Kapusta. 07/12/94 D. Tlusty, M. Kielcheski dug for corner with backhoe. At the center of the road intersection and 40" deep, found part of granite boulder, 10" x 12" x 8" which appears to have been broken or cut on 4 sides and is naturally smooth on the other two sides. This is the only stone this size in the area dug. All others are less than 4" dia. Accepted this stone as the corner set perpetuated by Dorr.
 In the plan view drawing below, provide reference ties to at least 4 witness monuments, or, if the location is within a municipality, to at least 2 witness monuments. (Witness monuments shall be made of concrete, natural stone, iron or other equally durable material.)
 Describe witness monuments.
 ○ = 3/4" x 30" re-bar set flush for witness corner
 † = white vinyl sign post with "Survey Marker" sign set within 0.5' of re-bar
 FB 4-99



Describe any material discrepancy between the location of the corner as restored or reestablished and the location of that corner as previously restored or reestablished by distance and direction. Show the discrepancy on the plan view drawing under (d), above. Show the distances between the corner as previously restored or reestablished and (1) the corner as restored or reestablished, and (2) to at least 2 of the witness monuments shown on the drawing in (d), above. Existing stone of record found 2.37' SW of corner established by Kelly.

(f) Was the corner restored through acceptance of (1) an obliterated evidence location, or, (2) a found perpetuated location?
A found perpetuated location.

(g & h) Was the corner reestablished through lost corner proportionate methods? If so, show the method, including the directions and distances to other public land survey corners used as evidence or used for proportioning in determining the corner location.
No.

(i) I, David E. Tlusty, Langlade County Surveyor
(type or print name)

certify that the corner location shown on this record was determined by me or under my direction and control and that this U.S. Public Land Survey Monument Record is correct and complete to the best of my knowledge and belief.

David E. Tlusty Signature
7/18/94 Date

