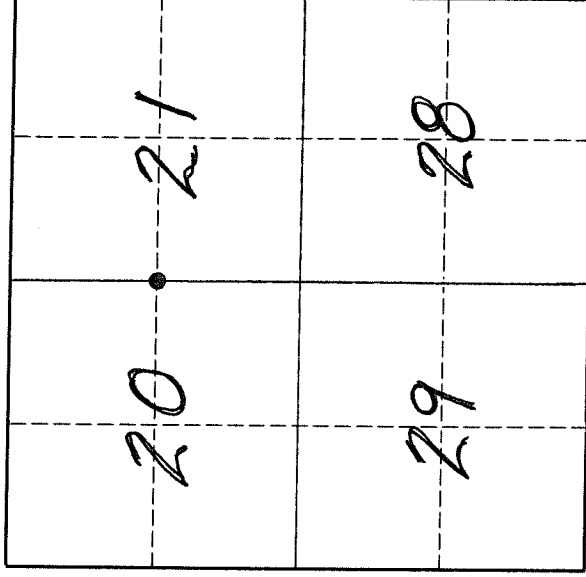


U. S. PUBLIC LAND SURVEY MONUMENT RECORD

I N S T R U C T I O N S:

This record shall show the location of the corner and shall include all of the following nine elements (a through i).

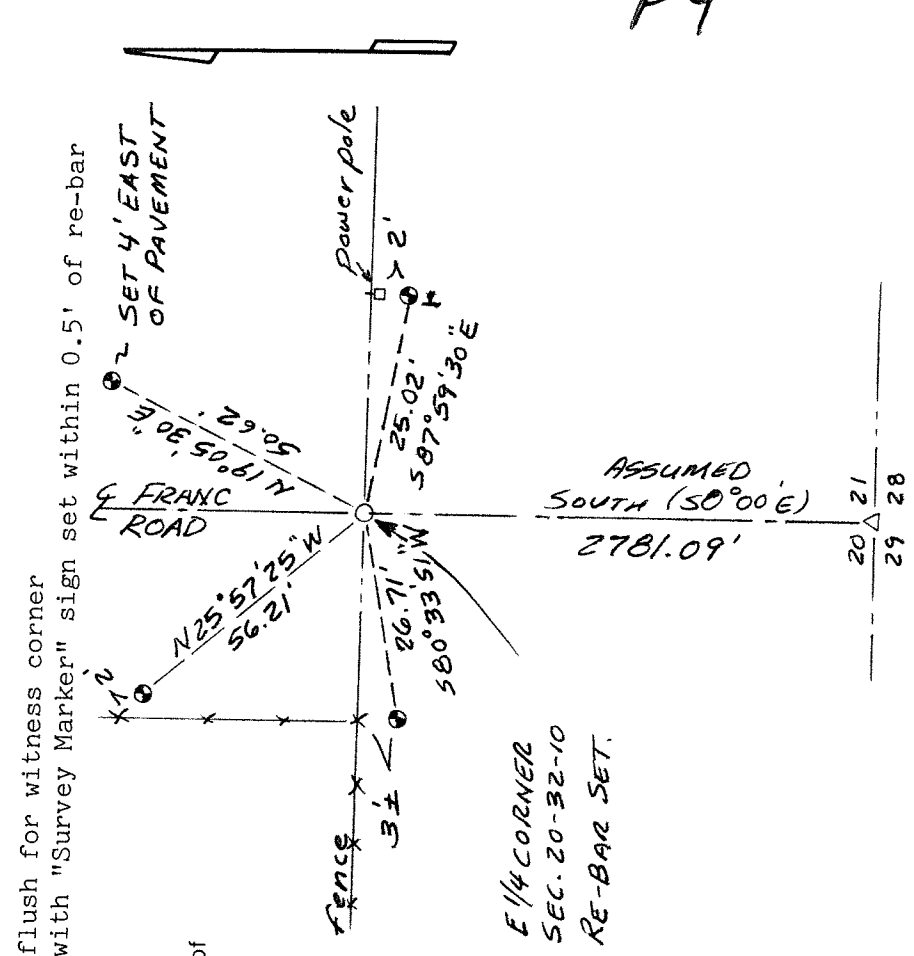
- (a) Identify the corner by reference to the U.S. public land survey system.
 ● = Corner monument restored.
- The East Quarter corner of Section 20, Township 32 North, Range 10 East, Langlade County, Wisconsin.



T. 32 N., R. 10 E.

- (b) Describe any record evidence, monument evidence, occupational evidence, testimonial evidence or any other material evidence you considered, and whether the monument was found or placed.
- The original corner was established in 1860 by Hiram C. Fellows. Original bearing trees: Fir, 8", S30°W, 12 lks., and a birch, 7", N27°E, 37 lks. In 1912, Malcolm Hutchinson set stone by "equal distance between corners". Stone 6" x 6" x 14" with "x" on top, broken dishes and glass. 07/12/94 D. Tlusty M. Kielcheski dug for corner with backhoe. Found no stone, but at the center of the road and in line with an old fence to the west, found a pocket of broken white dishes and clear grey glass. Dug additional 14" into original undisturbed soil. No stone found. Accepted location of center of broken dishes and glass as the best evidence of the corner location. Set 3/4" x 30" re-bar for corner, top of which is 50" below road surface. Placed old broken dishes and glass around top of re-bar. Painted blue.
- 07/15/94 D. Tlusty, set 3/4" x 30" re-bar in bituminous patch, 0.5' below surface.
- (c) In the plan view drawing below, provide reference ties to at least 4 witness monuments, or, if the location is within a municipality, to at least 2 witness monuments. (Witness monuments shall be made of concrete, natural stone, iron or other equally durable material.) Describe witness monuments.

- = 3/4" x 30" re-bar set flush for witness corner
 † = white vinyl sign post with "Survey Marker" sign set within 0.5' of re-bar
- (d) Show a plan view drawing depicting the relevant monuments and reference ties which is sufficient in detail to enable accurate relocation of the corner monument if the corner monument is disturbed. Indicate north.



Describe any material discrepancy between the location of the corner as restored or reestablished and the location of that corner as previously restored or reestablished by distance and direction. Show the discrepancy on the plan view drawing under (d), above. Show the distances between the corner as previously restored or reestablished and (1) the corner as restored or reestablished, and (2) to at least 2 of the witness monuments shown on the drawing in (d), above.

No discrepancy.

- (f) Was the corner restored through acceptance of (1) an obliterated evidence location, or, (2) a found perpetuated location?
A found perpetuated location.

- (g & h) Was the corner reestablished through lost corner proportionate methods? If so, show the method, including the directions and distances to other public land survey corners used as evidence or used for proportioning in determining the corner location.

No.

- (i) I, David E. Tlusty, Langlade County Surveyor
(type or print name)

certify that the corner location shown on this record was determined by me or under my direction and control and that this U.S. Public Land Survey Monument Record is correct and complete to the best of my knowledge and belief.

David E. Tlusty Signature
July 18, 1994 Date

