

4321020 0020 U.S. PUBLIC LAND SURVEY MONUMENT RECORD

HISTORY OF ORIGINAL CORNER ESTABLISHMENT AND SUBSEQUENT RESTORATION AND DESCRIPTION OF ANY RECORD, MONUMENT OCCUPATIONAL, TESTIMONIAL OR OTHER EVIDENCE CONSIDERED:

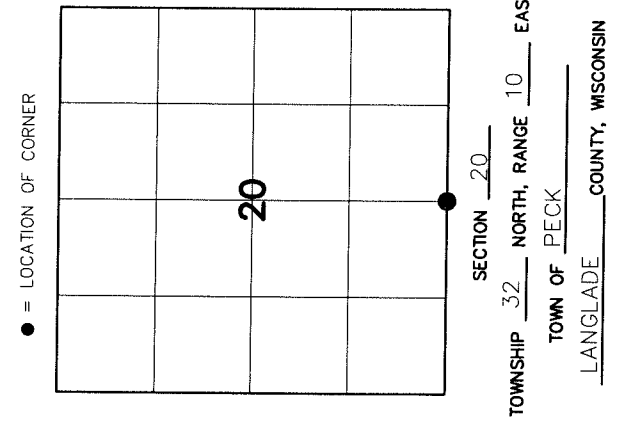
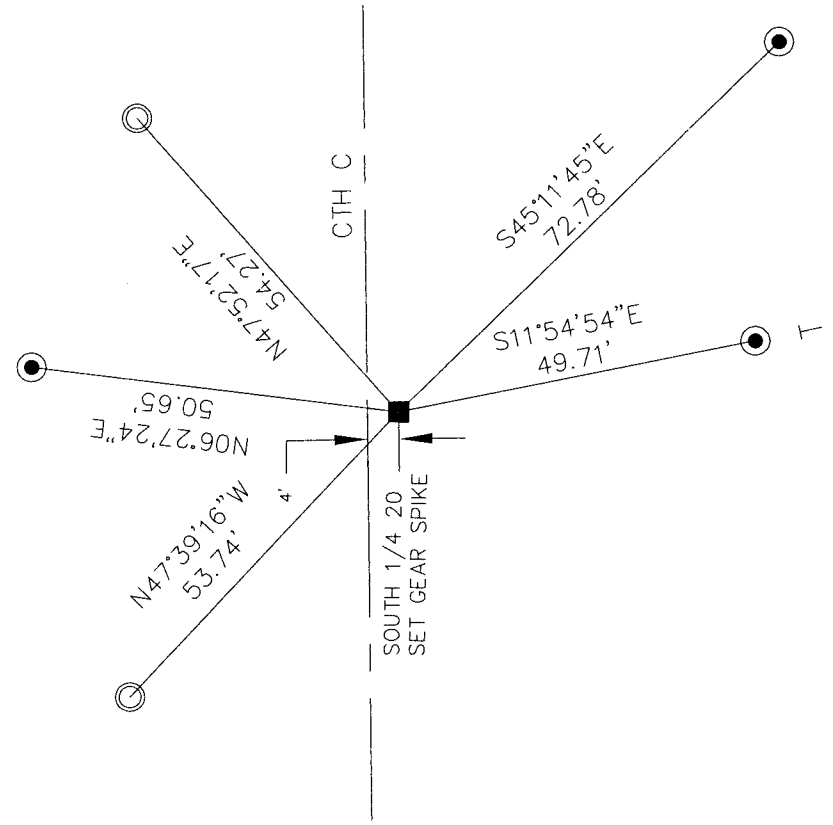
THE ORIGINAL CORNER WAS SET BY FELLOWS IN 1860 WITH THE ORIGINAL BEARING TREES OF:
12" MAPLE - S26°E 14 LINKS
20" BIRCH - N36°W 22 LINKS
1939 - HUTCHINSON USED THIS CORNER FOR WORK IN SECTION 29 DESCRIBED AS BUGGY AXLE
1981 - KELLY DESCRIBED IT AS A 1" IRON PIPE AND KELLY SET A 1.5" PIPES 33 FEET NORTH AND SOUTH
1999 - TLUSTY FOUND THE BUGGY AXLE AS STATED BY HUTCHINSON 2.6 FEET BELOW THE ROAD SURFACE AND SET TIES.
2012 - CTH C HAD BEEN RECONSTRUCTED AND THE BUGGY SHAFT HAD BEEN REMOVED. I WAS ABLE TO RE-ESTABLISH THE LOCATION FROM TLUSTY'S REMAINING TIES AND WE PLACE TWO NEW TIES AND A GEAR SPIKE AT THE CORNER.

CORNER WAS: (CHECK ALL THAT APPLY)

- RESTORED THROUGH ACCEPTANCE OF AN OBLITERATED EVIDENCE LOCATION
- RESTORED THROUGH ACCEPTANCE OF A FOUND PERPETUATED LOCATION
- CONSIDERED A LOST CORNER AND REESTABLISHED THROUGH LOST CORNER PROPORTIONATE METHODS (INCLUDE A PLAN VIEW DRAWING SHOWING DISTANCES AND DIRECTIONS TO OTHER PUBLIC LAND SURVEY CORNERS USED FOR PROPORTIONING AND DETERMINING THE CORNER LOCATION)
- RESTORED OR REESTABLISHED IN A LOCATION THAT DIFFERS FROM A PREVIOUS RESTORATION OR REESTABLISHMENT (INCLUDE A PLAN VIEW DRAWING AND INDICATE WHAT WAS SET AND/OR FOUND)
- CHECK IF THERE IS ADDITIONAL INFORMATION ON BACK

DESCRIBE THE MONUMENT AND ACCESSORIES USED TO PERPETUATE THE LOCATION OF THE CORNER. (INCLUDE A PLAN VIEW DRAWING AND INDICATE WHAT WAS SET AND/OR FOUND) ALSO INCLUDE FOUR TIES TO THE SECTION CORNER AND DESCRIPTION OF THE TIES.

- SET 3/4" X 24" IRON RE-BAR
 - FD 3/4" RE-BAR
- BEARINGS REFERENCED TO THE LANDGLADE COUNTY COORDINATE SYSTEM

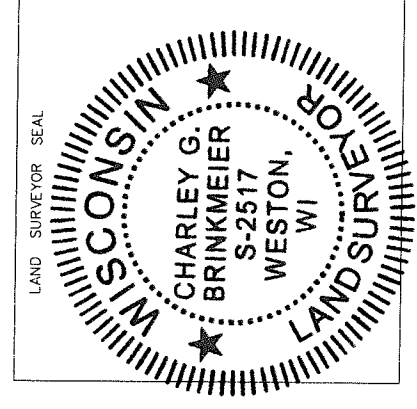


CHARLEY G. BRINKMEIER

(Type or print name) CERTIFY THAT THE CORNER LOCATION SHOWN ON THIS RECORD WAS DETERMINED BY ME OR UNDER MY DIRECTION AND CONTROL AND THAT THIS U.S. PUBLIC LAND SURVEY MONUMENT RECORD IS CORRECT AND COMPLETE TO THE BEST OF MY KNOWLEDGE AND BELIEF.

Charley G. Brinkmeier
SIGNATURE

10-10-12
DATE



R7 32-10

INDEX NO