

CERTIFIED LAND CORNER RESTORATION

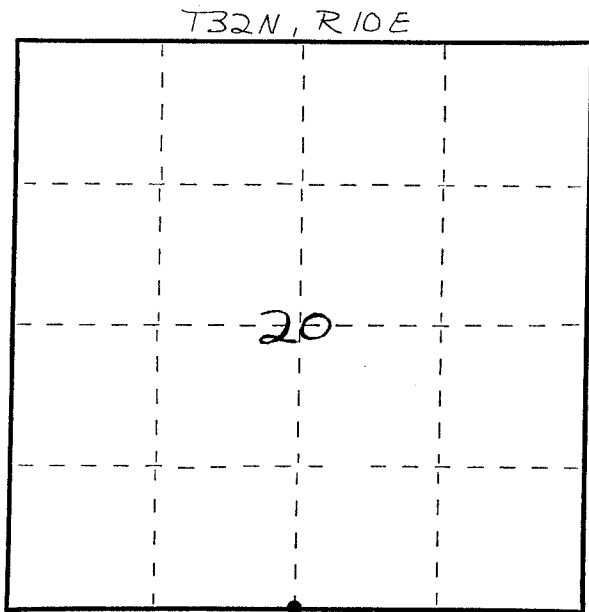
Index No. R-7

State of Wisconsin }
County of LANGLADE } ss.

I WILLIAM F. KELLY, do hereby certify that on the 21ST day of OCTOBER, 1981, I found evidence of the S 1/4 corner of SEC. 20 Township 32, North, Range 10 EAST, Fourth Principal Meridian, as described hereon; and that from this evidence I established a new monument and accessories as described hereon to perpetuate the original location of this corner.

Resident witnesses:

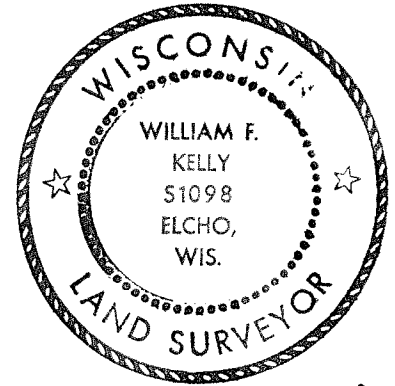
.....
.....
.....



○ = Corner monument restored.

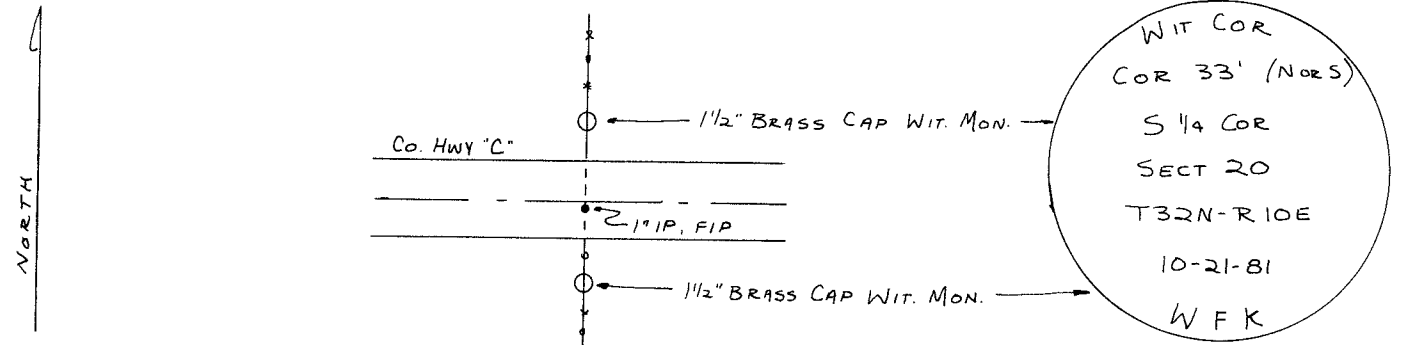
History of original corner establishment:
ORIGINAL CORNER ESTABLISHED BY
HIRAM C. FELLOWS IN SEP., 1860

Description of corner evidence found:
1" IRON PIPE, FOUND IN PLACE



William F. Kelly

SET 2 - 1 1/2" x 42" BLACK IRON PIPES WITH BRASS CAP WIT. MONUMENTS
Description of monument and accessories I established to perpetuate the original location of this corner.



Dated at ELCHO, Wis., this 21ST day of OCTOBER, 1981.

Signature William F. Kelly Title COUNTY SURVEYOR Registration No. 1098
(County Surveyor, Registered Land Surveyor, or other duly authorized official)

Office of Register of Deeds, County of....., I hereby certify that the within instrument was filed in this office for record on the..... day of....., 19..... at..... o'clock..... M.

.....
(Register of Deeds)

By..... Deputy

FORM 985 H. C. MILLER CO., MILWAUKEE