

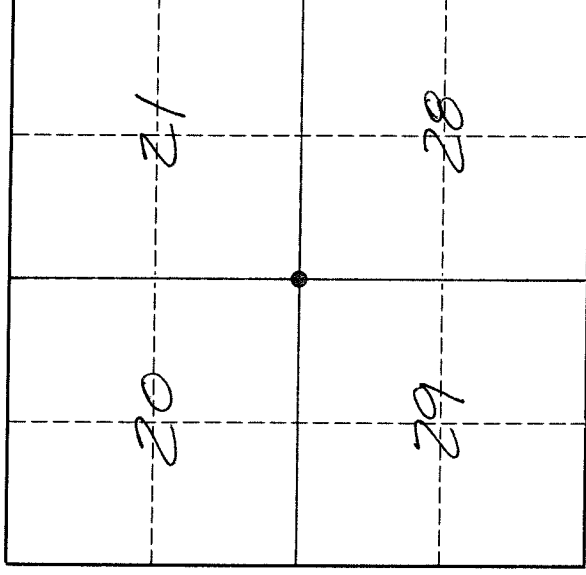
U. S. PUBLIC LAND SURVEY MONUMENT RECORD

I N S T R U C T I O N S:

This record shall show the location of the corner and shall include all of the following nine elements (a through i).

- (a) Identify the corner by reference to the U.S. public land survey system.
- = Corner monument restored.

The Southeast corner of Section 20,
Township 32 North,
Range 10 East,
Langlade County,
Wisconsin.



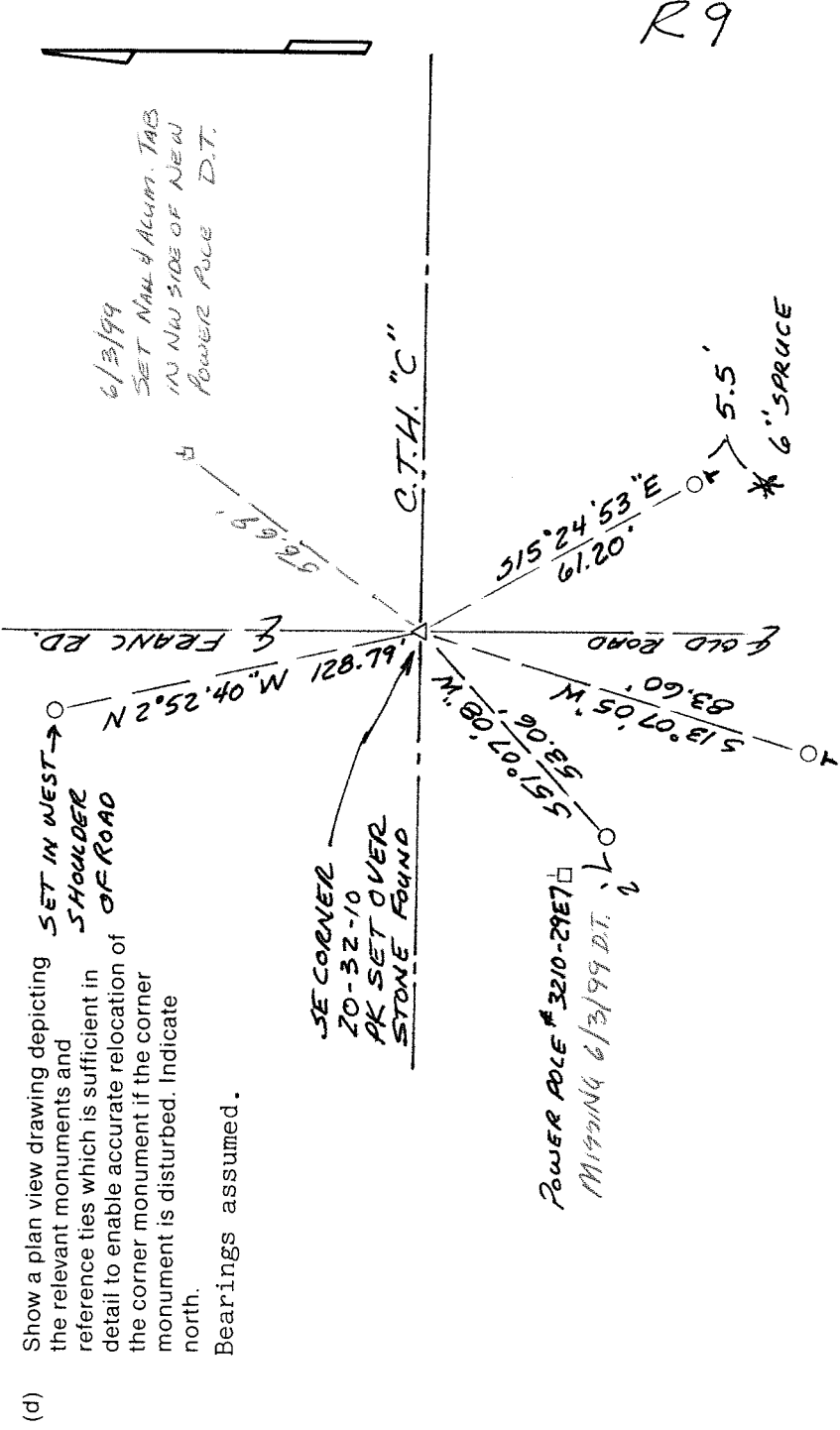
T. 32 N., R. 10 E.

- (b) Describe any record evidence, monument evidence, occupational evidence, testimonial evidence or any other material evidence you considered, and whether the monument was found or placed.
The original corner location was established in 1860 by Hiram C. Fellows. Original BT's: Birch, 6", S62°E, 14 lks., and a Birch, 10", N68°W, 14 lks. In August, 1922, W.C. Weblly, in FB124-90, used this corner for survey work in the SW quarter of Section 21, but didn't describe the corner. In May of 1939, Malcolm Hutchinson, in FB122-153, described the corner as "stone in road". On June 14, 1994, I dug in the road, and at 27" down, I found a 6" x 8" wedgeshaped stone upright and in good condition. Top of stone has obvious notch cut in it. I accept this stone as the best evidence of the original corner location. Set a 3/4" x 30" re-bar on north edge of stone. Set PK in pavement over stone.

- (c) In the plan view drawing below, provide reference ties to at least 4 witness monuments, or, if the location is within a municipality, to at least 2 witness monuments. (Witness monuments shall be made of concrete, natural stone, iron or other equally durable material.)
Describe witness monuments.
○ = 3/4" x 30" re-bar for witness corner.
↓ = white vinyl sign post with "SURVEY MARKER" sign

FB4-96

SE CORNER
20-32-10
PK SET OVER
STONE FOUND



- (d) Show a plan view drawing depicting the relevant monuments and reference ties which is sufficient in detail to enable accurate relocation of the corner monument if the corner monument is disturbed. Indicate north.
Bearings assumed.

Describe any material discrepancy between the location of the corner as restored or reestablished and the location of that corner as previously restored or reestablished by distance and direction. Show the discrepancy on the plan view drawing under (d), above. Show the distances between the corner as previously restored or reestablished and (1) the corner as restored or reestablished, and (2) to at least 2 of the witness monuments shown on the drawing in (d), above.

No discrepancy.

- (f) Was the corner restored through acceptance of (1) an obliterated evidence location, or, (2) a found perpetuated location?
A found perpetuated location.

- (g & h) Was the corner reestablished through lost corner proportionate methods? If so, show the method, including the directions and distances to other public land survey corners used as evidence or used for proportioning in determining the corner location.
No.

- (i) I, David E. Tlusty, Langlade County Surveyor,
(type or print name)

certify that the corner location shown on this record was determined by me or under my direction and control and that this U.S. Public Land Survey Monument Record is correct and complete to the best of my knowledge and belief.


Signature

June 16, 1994
Date

