

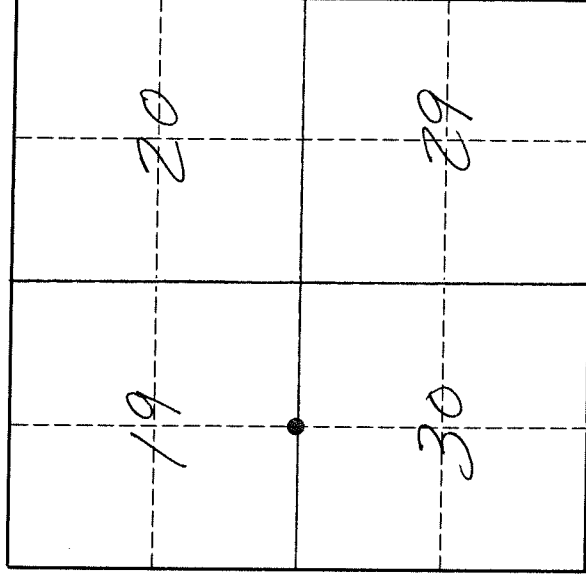
U. S. PUBLIC LAND SURVEY MONUMENT RECORD

I N S T R U C T I O N S:

This record shall show the location of the corner and shall include all of the following nine elements (a through i).

- (a) Identify the corner by reference to the U.S. public land survey system.
- = Corner monument restored.

The South Quarter corner of Section 19, Township 32 North, Range 10 East, Langlade County, Wisconsin.



T. 32 N., R. 10 E.

- (b) Describe any record evidence, monument evidence, occupational evidence, testimonial evidence or any other material evidence you considered, and whether the monument was found or placed.

The original corner was established in 1860 by Hiram C. Fellows. Original BT's: Sugar, 12", N44°E, 10 lks., and a Birch, 20", S44°W, 22 lks. In 1895, B. F. Dorr, in FB97-161, said that the corner was a blue stone, 4"x6"x30" with + on top. On June 14, 1994, I dug in the road. At 30" below the road surface, found a 4" x 6" blue stone, upright and in good condition. The stone found is approx. 3' north of the road centerline and in line with a very old fence to the north. Although Dorr made no mention of original survey evidence, he was at the corner only 25 years after the original, therefore I accept the location of the stone found as the best evidence of the original corner location. I set a 3/4" x 30" re-bar on the SE side of the existing stone monument. Set a 60d spike as temporary monument in road patch.

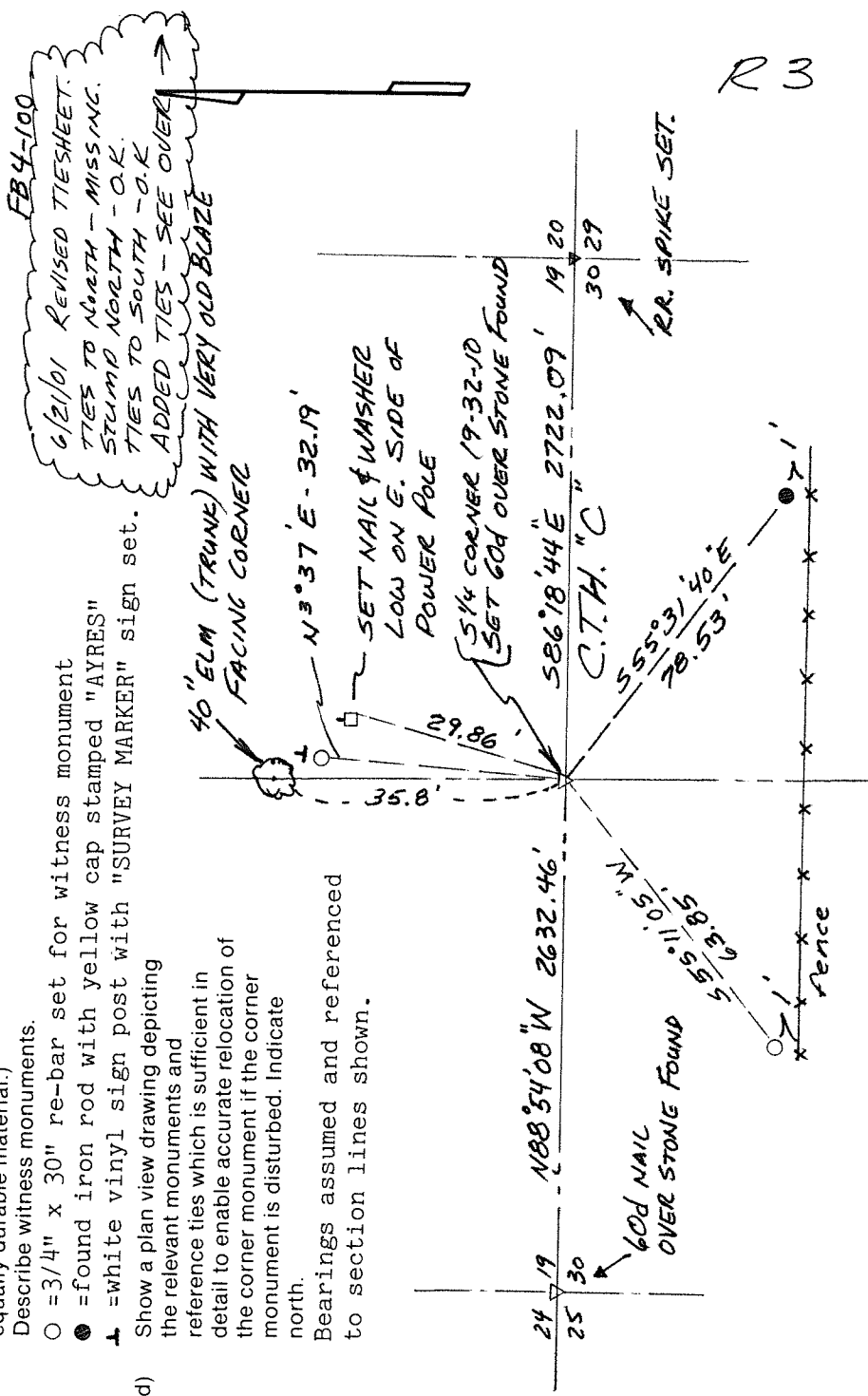
- (c) In the plan view drawing below, provide reference ties to at least 4 witness monuments, or, if the location is within a municipality, to at least 2 witness monuments. (Witness monuments shall be made of concrete, natural stone, iron or other equally durable material.)

Describe witness monuments.

- = 3/4" x 30" re-bar set for witness monument
- = found iron rod with yellow cap stamped "AYRES"
- ⬇ = white vinyl sign post with "SURVEY MARKER" sign set.

- (d) Show a plan view drawing depicting the relevant monuments and reference ties which is sufficient in detail to enable accurate relocation of the corner monument if the corner monument is disturbed. Indicate north.

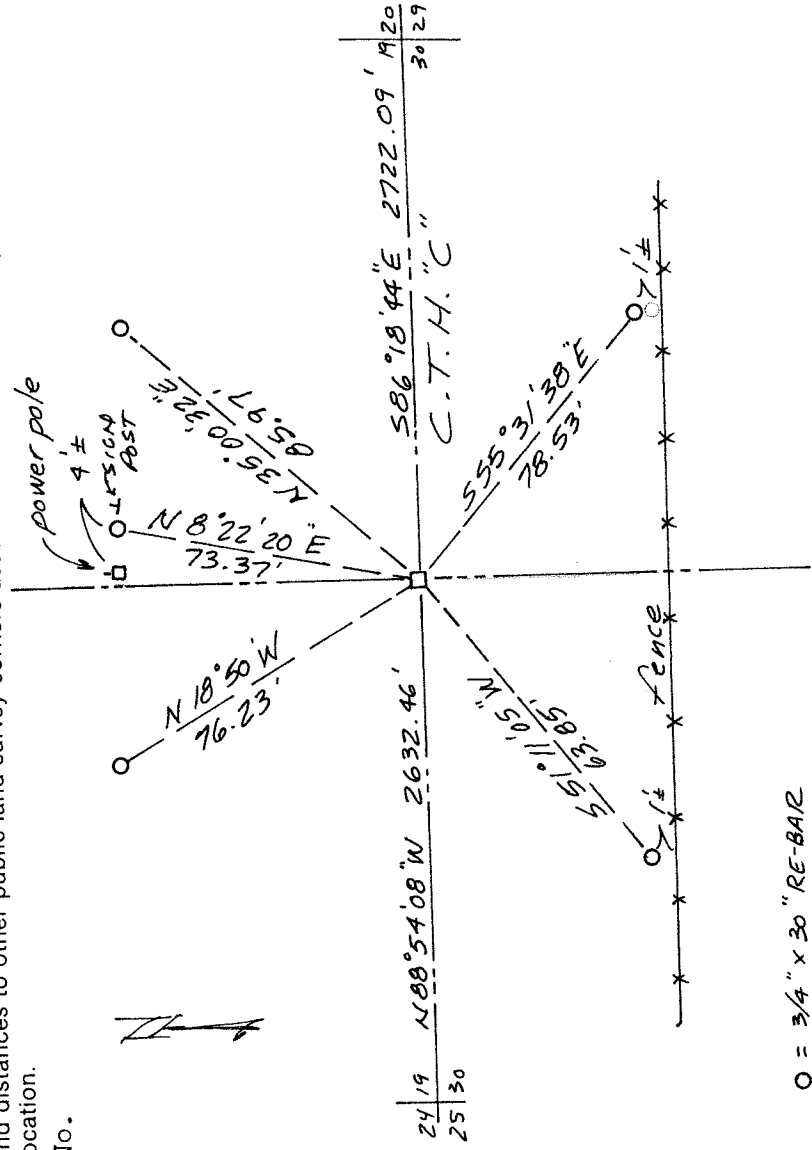
Bearings assumed and referenced to section lines shown.



Describe any material discrepancy between the location of the corner as restored or reestablished and the location of that corner as previously restored or reestablished by distance and direction. Show the discrepancy on the plan view drawing under (d), above. Show the distances between the corner as previously restored or reestablished and (1) the corner as restored or reestablished, and (2) to at least 2 of the witness monuments shown on the drawing in (d), above.
 No discrepancy.

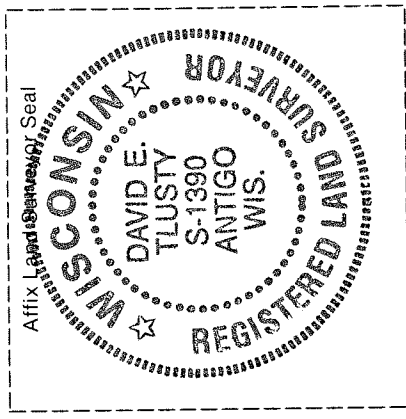
- (f) Was the corner restored through acceptance of (1) an obliterated evidence location, or, (2) a found perpetuated location?
 A found perpetuated location.

(g & h) Was the corner reestablished through lost corner proportionate methods? If so, show the method, including the directions and distances to other public land survey corners used as evidence or used for proportioning in determining the corner location.
 No.
 FB 14-65



O = 3/4" x 30" RE-BAR

6/18/97 ADDED 3 TIES ON N. SIDE OF ROAD
 6/20/01 REVISED THE SHEET D. Tlusty



(i) I, David E. Tlusty, Langlade County Surveyor,
 (type or print name)

certify that the corner location shown on this record was determined by me or under my direction and control and that this U.S. Public Land Survey Monument Record is correct and complete to the best of my knowledge and belief.

David E. Tlusty June 16, 1994
 Signature Date