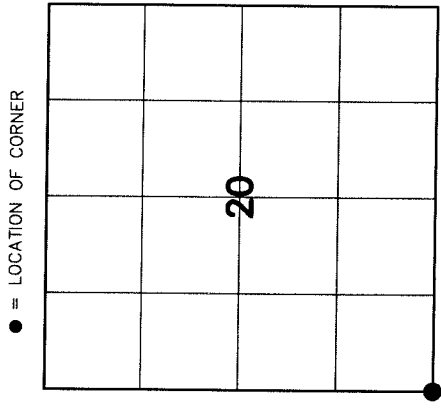


U.S. PUBLIC LAND SURVEY MONUMENT RECORD

4321019 0000

HISTORY OF ORIGINAL CORNER ESTABLISHMENT AND SUBSEQUENT RESTORATION AND DESCRIPTION OF ANY RECORD, MONUMENT OCCUPATIONAL, TESTIMONIAL OR OTHER EVIDENCE CONSIDERED:

THE ORIGINAL CORNER WAS SET BY FELLOWS IN 1860 WITH THE ORIGINAL BEARING TREES OF:
 10" BIRCH - S38°E 13 LINKS
 10" BIRCH - N63°W 11 LINKS
 1917 - BROOKS USED THIS CORNER FOR WORK IN SECTION 20
 1939 - HUTCHINSON USED THIS CORNER FOR WORK IN SECTION 29 DESCRIBED AS ANGLE IRON
 1994 - TLUSTY RESET CORNER BASED ON HUTCHINSONS INFORMATION SET RR SPIKE
 2012 - I FOUND A BERNITSEN NAIL THAT FITS WITH TLUSTY'S TIES. WE SET TWO NEW TIES AS SHOWN.



SECTION 20
 TOWNSHIP 32 NORTH, RANGE 10 EAST
 TOWN OF PECK
 LANGLADE COUNTY, WISCONSIN

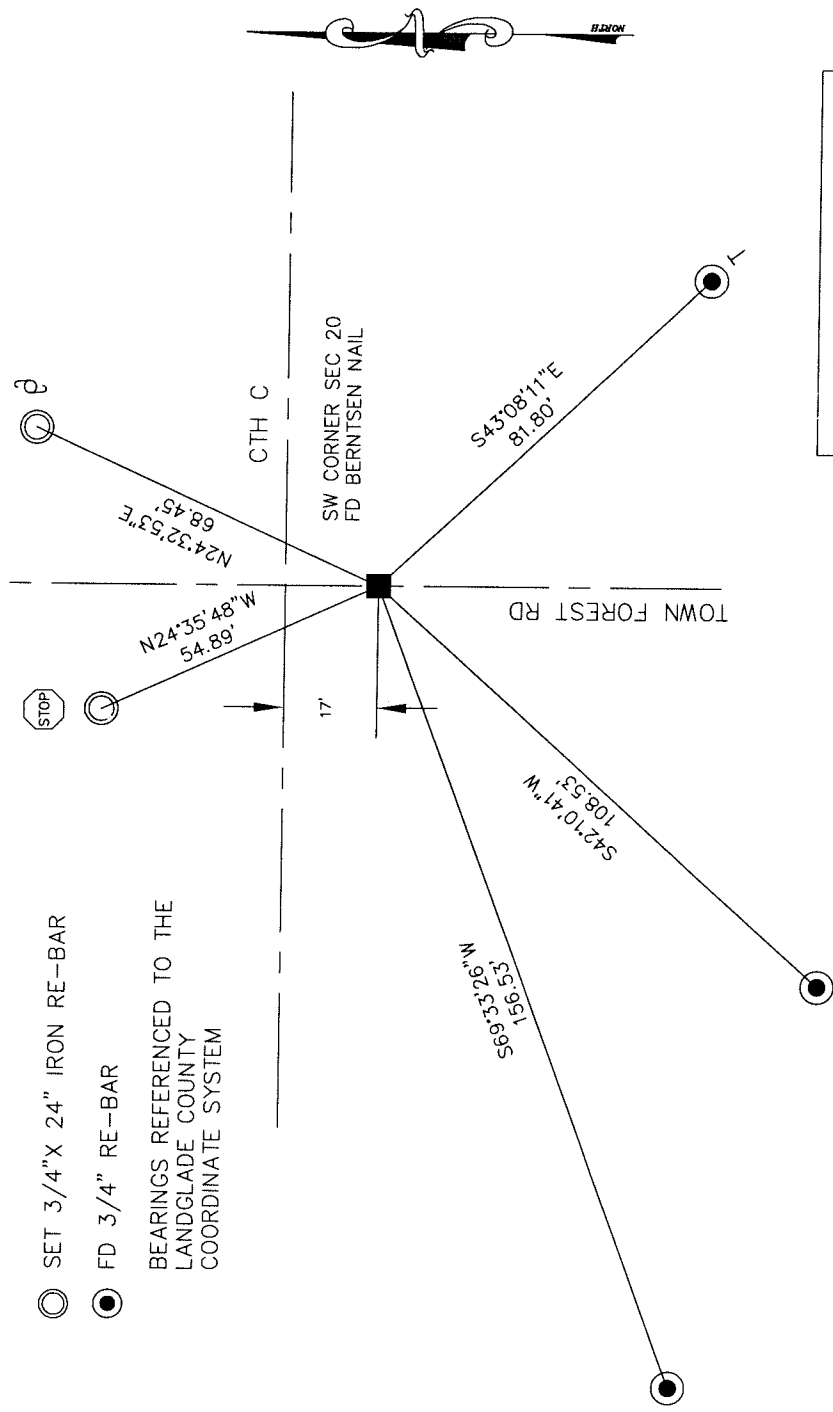
CORNER WAS: (CHECK ALL THAT APPLY)

- RESTORED THROUGH ACCEPTANCE OF AN OBLITERATED EVIDENCE LOCATION
- RESTORED THROUGH ACCEPTANCE OF A FOUND PERPETUATED LOCATION
- CONSIDERED A LOST CORNER AND REESTABLISHED THROUGH LOST CORNER PROPORTIONATE METHODS (INCLUDE A PLAN VIEW DRAWING SHOWING DISTANCES AND DIRECTIONS TO OTHER PUBLIC LAND SURVEY CORNERS USED FOR PROPORTIONING AND DETERMINING THE CORNER LOCATION)
- RESTORED OR REESTABLISHED IN A LOCATION THAT DIFFERS FROM A PREVIOUS RESTORATION OR REESTABLISHMENT (INCLUDE A PLAN VIEW DRAWING AND INDICATE WHAT WAS SET AND/OR FOUND)
- CHECK IF THERE IS ADDITIONAL INFORMATION ON BACK

DESCRIBE THE MONUMENT AND ACCESSORIES USED TO PERPETUATE THE LOCATION OF THE CORNER. (INCLUDE A PLAN VIEW DRAWING AND INDICATE WHAT WAS SET AND/OR FOUND) ALSO INCLUDE FOUR TIES TO THE SECTION CORNER AND DESCRIPTION OF THE TIES.

- SET 3/4" X 24" IRON RE-BAR
- FD 3/4" RE-BAR

BEARINGS REFERENCED TO THE
 LANGLADE COUNTY
 COORDINATE SYSTEM

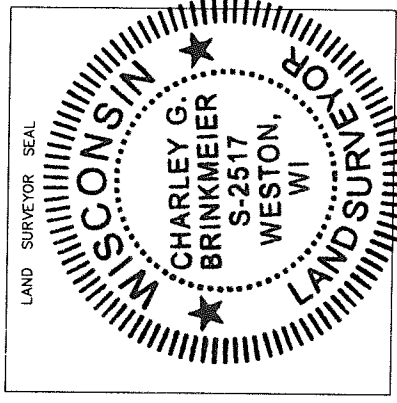


CHARLEY G. BRINKMEIER

(type or print name) CERTIFY THAT THE CORNER LOCATION SHOWN ON THIS RECORD WAS DETERMINED BY ME OR UNDER MY DIRECTION AND CONTROL AND THAT THIS U.S. PUBLIC LAND SURVEY MONUMENT RECORD IS CORRECT AND COMPLETE TO THE BEST OF MY KNOWLEDGE AND BELIEF.

Charley Brinkmeier
 SIGNATURE

10-10-12
 DATE



R5 32-10
 INDEX NO.