

# U.S. PUBLIC LAND SURVEY MONUMENT RECORD

THIS RECORD SHALL SHOW THE LOCATION OF THE CORNER AND SHALL INCLUDE ALL OF THE FOLLOWING NINE ELEMENTS (A THROUGH I).

## CORNER MONUMENT RESTORED:

WEST QUARTER CORNER, Section 17, T32N, R10E,  
Town of Peck, Langlade County, Wisconsin.  
(a) Identify the corner by reference to the U.S. public land survey system.

ORIGIN: Township subdivision by H.C. Fellows in 1860 Set post.

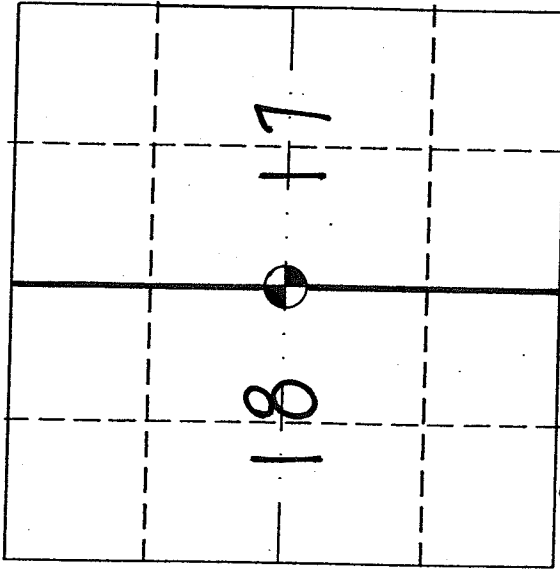
## PERPETUATION:

1895 B.F.DORR FB.97, pg.160 Found gray boulder with cross on top 14"x18"  
1901± WEPLY FB.100 pg.131 survey  
1909 E.S.BROOKS "Big Book" pg.60 Stone re-moved by road machinery. Reset stone in its hole & set "Bf" stone, 4"x6"x20" w/cross on top. S 450 W, 33feet.  
1916 M.HUTCHINSON FB.122 pgs.33-36 and Big Book pgs.158-159 Call for stone in road.

1994 D.ILUSTY Dug w/ backhoe 5'x14'N-S in road, found nothing.  
(b) Describe any record evidence, monument evidence, occupational evidence, testimonial evidence or any other material evidence you considered, and whether the monument was found or placed. W1/4 Cor. LOST

RECORD EVIDENCE: Field notes of section split by Malcolm Hutchinson also shows subdivision of NW1/4.

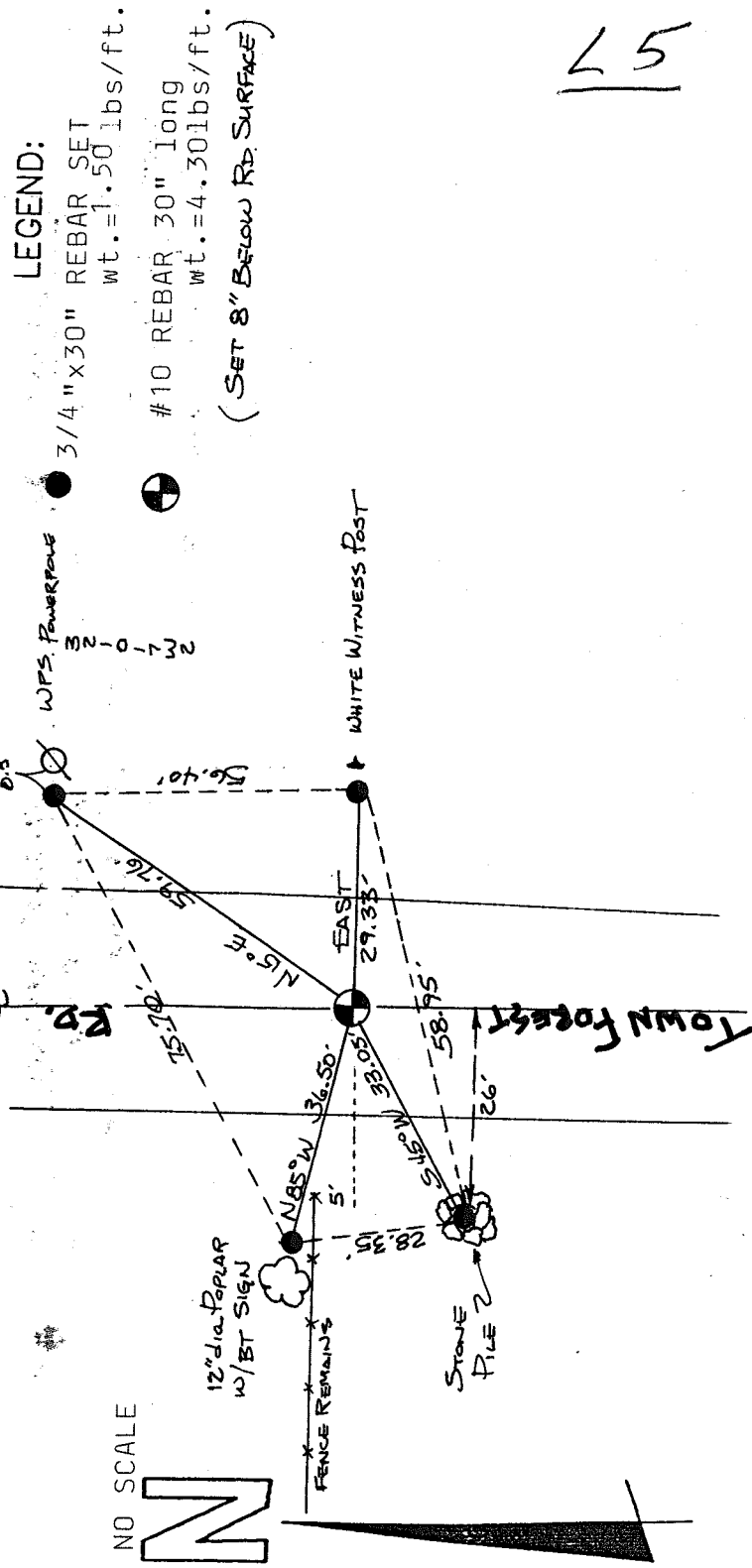
MONUMENT EVIDENCE: Found and accepted previously monumented E1/4 corner and W1/16 corner. Found NW corner stone but could not accept the SW corner as monumented. (PUB.SERVICE control) Relied on E-W 1/4 line and Hutchinson's dimensions to prorate the W1/4.



⊗ = corner monument restored.

(c) In the plan view drawing below, provide reference ties to at least four witness monuments, or, if the location is within a municipality, to at least two witness monuments. (Witness monuments shall be made of concrete, natural stone, iron or other equally durable material.) Describe witness monuments.

(d) Show a plan view drawing depicting the relevant monuments and reference ties which is sufficient in detail to enable accurate relocation of the corner monument if the corner monument is disturbed. Indicate north.



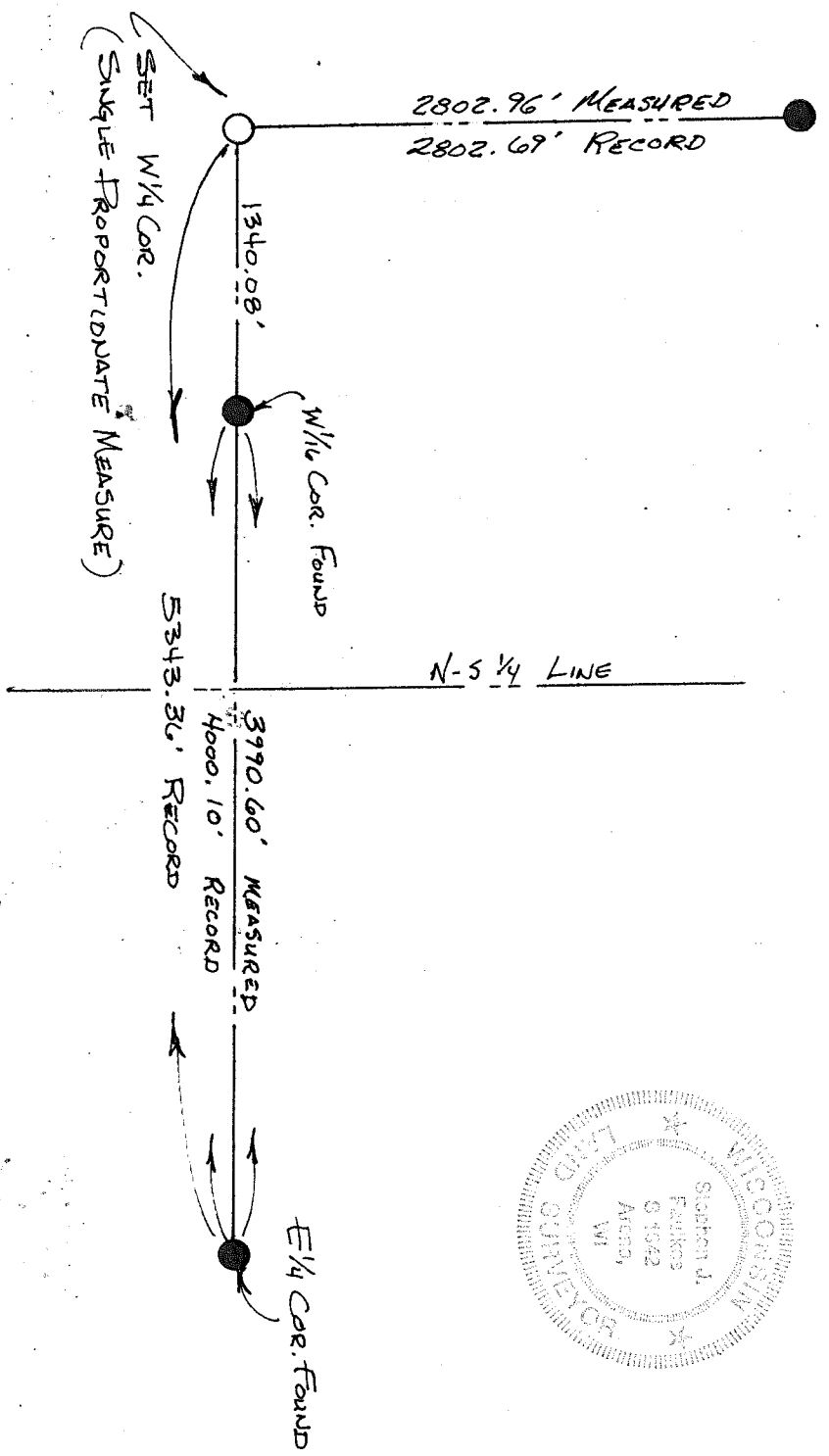
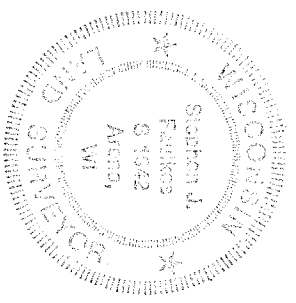
(e) Describe any material discrepancy between the location of the corner as restored or reestablished and the location of that corner as previously restored or reestablished by distance and direction. Show the discrepancy on the plan view drawing under (d), above. Show the distances between the corner as previously restored or reestablished and (1) the corner as restored or reestablished, and (2) to at least two of the witness monuments shown on the drawing in (d), above.

(f) Was the corner restored through acceptance of (1) an obliterated evidence location, or (2) a found perpetuated location?

(g) & (h) Was the corner reestablished through lost corner proportionate methods? If so, show the method, including the directions and distances to other public land survey corners used as evidence or used for proportioning in determining the corner location?

THIS WAS A LOST CORNER AND WAS REESTABLISHED THROUGH LOST CORNER PROPORTIONATE METHODS.

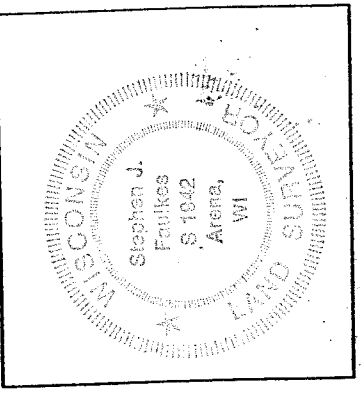
NW Cor. FOUND



(1) I, STEPHEN J. FAULKES RLS. #1942

(type or print name) certify that the corner location shown on this record was determined by me or under my direction and control and that this U.S. Public Land Survey Monument Record is correct and complete to the best of my knowledge and belief.

Stephen J. Faulkes 6/17/96  
Date



affix land surveyor seal

Signature