

CERTIFIED LAND CORNER RESTORATION

Index No. N-5

State of Wisconsin }
County of LANGLADE } ss.

I WILLIAM F. KELLY, do hereby certify that on the 23RD day of OCTOBER, 1981, I found evidence of the NW corner of SEC. 20 Township 32, North, Range 10 EAST, Fourth Principal Meridian, as described hereon; and that from this evidence I established a new monument and accessories as described hereon to perpetuate the original location of this corner.

Resident witnesses:

.....
.....
.....

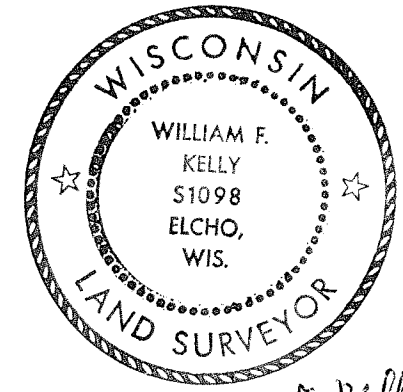
History of original corner establishment:
ORIGINAL CORNER ESTABLISHED
BY HIRAM C. FELLOWS IN SEP, 1860

Description of corner evidence found:

REBAR WITH PLASTIC CAP FOUND
IN PLACE. SET 2" x 42" BLACK
IRON PIPE WITH BRASS CAP
W/IT MONUMENT.

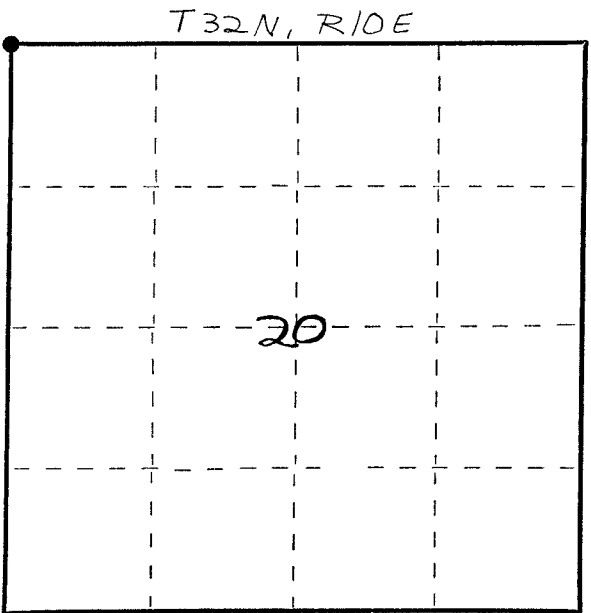
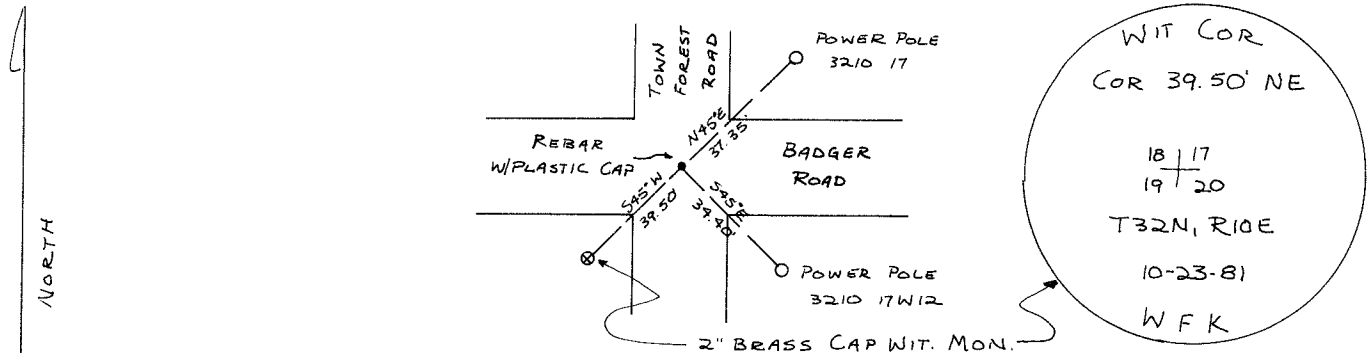
REBAR SET BY W.P.S. ON
TRANSMISSION LINE SURVEY

*5/26/94 DIT.
W.P.S. SAYS THAT ANY MARKERS
IT SET WERE ONLY TRAVELER POINTS
& NOT NECESSARILY CORNERS*



William F. Kelly

Description of monument and accessories I established to perpetuate the original location of this corner.



○ = Corner monument restored.

Dated at ELCHO, Wis., this 23RD day of OCTOBER, 1981.

Signature William F. Kelly Title COUNTY SURVEYOR Registration No. 1098
(County Surveyor, Registered Land Surveyor, or other duly authorized official)

Office of Register of Deeds, County of, I hereby certify that the within instrument was filed in this office for record on the day of, 19..... at o'clock M.

.....
(Register of Deeds)
By Deputy

FORM 985 H. C. MILLER CO., MILWAUKEE