

# LANGLADE COUNTY U.S. PUBLIC LAND CORNER RESTORATION

The South Quarter corner of Section 16, T. 32 N., R. 10 E., Langlade County, WI.

- Corner was: (check all that apply)
- Restored through acceptance of an obliterated evidence location.
  - Restored through acceptance of a found perpetuated location.
  - Determined to be lost and re-established through proportionate methods.
  - Show bearings and distances to PLSS corners used for proportioning, and show original distances).
  - Restored/recovered/re-established in a location that differs from a previously established position.
  - (Show difference in plan view below).
  - Check here if additional information is shown on the reverse side of this form.

3210160020

**Describe record evidence, recovered physical evidence, occupational evidence, testimonial evidence and all other evidence considered in the recovery/restoration of the corner.**


The original corner was established in 1860 by Hiram C. Fellows. Original bearing trees: spruce, 6", S30°W, 40 links, and an aspen, 7", N55°E, 37 links. In 1909, Webley surveyed the South line of Section 16. 12/09/99 D. Tlusty, D. Williams established this corner on the east-west road centerline and by prorating east-west, using Webleys distances as the basis for prorating. See map #10527, County Surveyor records.

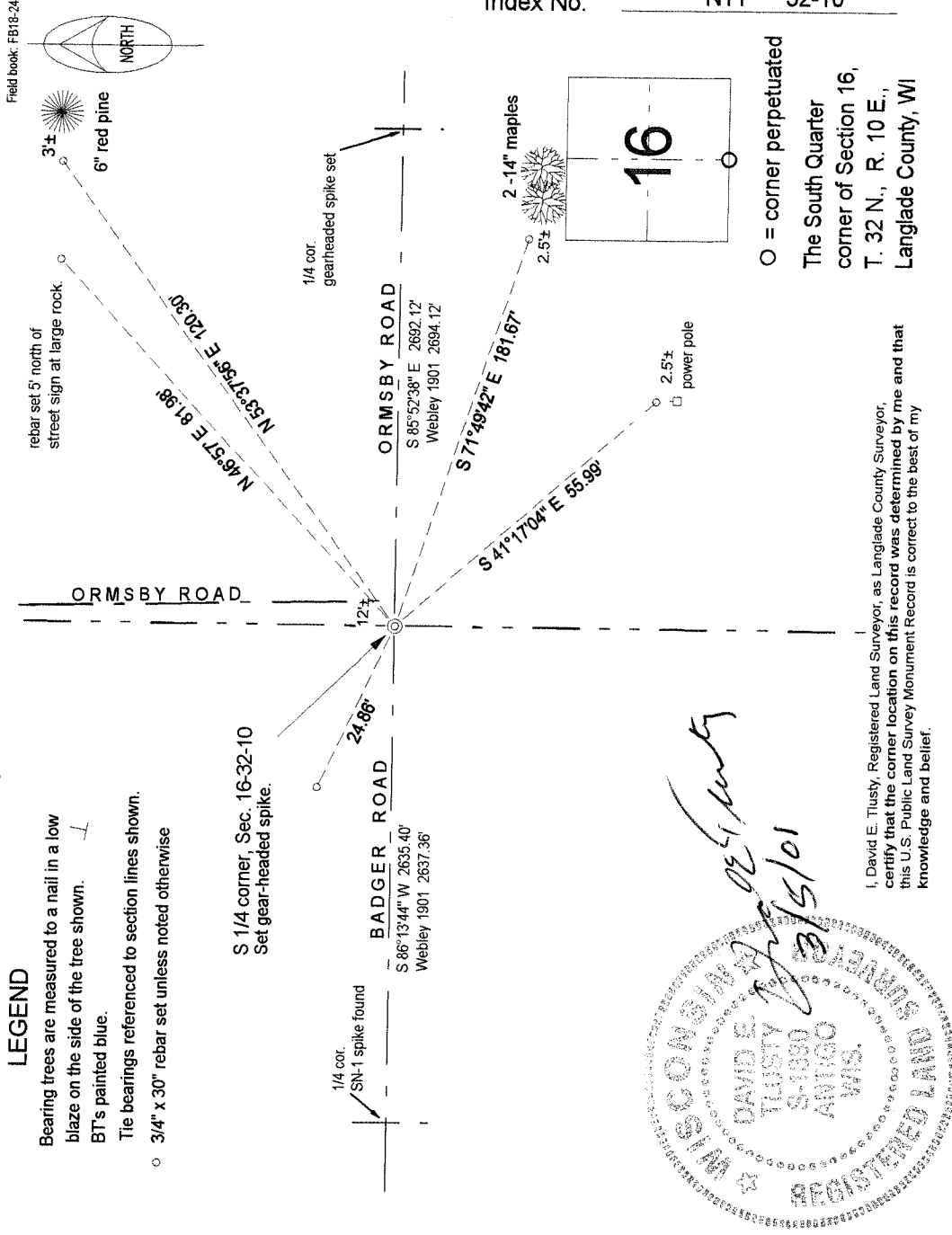
**Physical description of the monument set:**

Set a gearheaded spike for the corner.

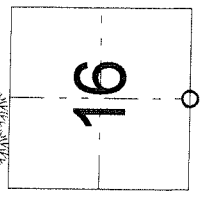
**Describe the accessories used to perpetuate the corner. Include a plan view drawing and accessories found/set. Describe measuring point on bearing trees. Show any topographic features that would aid in future recovery of the corner.**

**LEGEND**

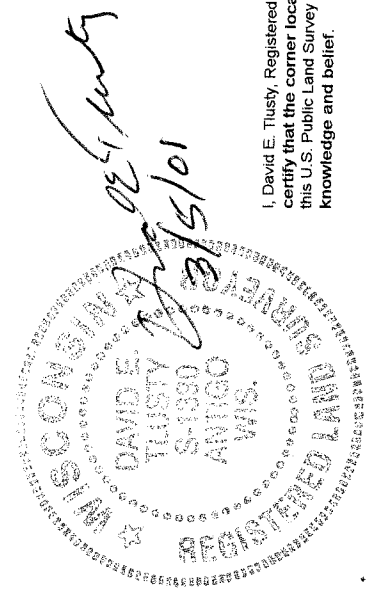
- Bearing trees are measured to a nail in a low blaze on the side of the tree shown. 
- BT's painted blue.
- Tie bearings referenced to section lines shown.
- 3/4" x 30" rebar set unless noted otherwise



Index No.            N11            32-10



○ = corner perpetuated  
 The South Quarter  
 corner of Section 16,  
 T. 32 N., R. 10 E.,  
 Langlade County, WI



I, David E. Tlusty, Registered Land Surveyor, as Langlade County Surveyor, certify that the corner location on this record was determined by me and that this U.S. Public Land Survey Monument Record is correct to the best of my knowledge and belief.