

U.S. PUBLIC LAND SURVEY MONUMENT RECORD

(Prepared and as required by S. A-E 7.08 WI Administrative Code)

The SOUTHWEST corner of Section 16, T. 32 N., R. 10 E., Langlade County, WI

Corner was: (check all that apply)

- Restored through acceptance of an obliterated evidence location.
- Restored through acceptance of a found perpetuated location.
- Determined to be lost and re-established through proportionate methods.
(Show bearings and distances to PLSS corners used for proportioning.)
- Restored/recovered/reestablished in a location that differs from a previously established position. (Show difference in plan view below.)

321017 0000

- Check here if additional information is shown on the reverse side of this form.

Describe record evidence, recovered physical evidence, occupational evidence, testimonial evidence and all other evidence considered in the recovery/restoration of the corner.

The original corner was established in 1860 by Hiram C. Fellows. Original bearing trees: fir, 11", S41°W, 21 lks. and a fir, 9", N60°E, 44 lks. In 1912, Hutchinson described found "BT set by Weby and hole where stake had been. Set stone 10" x 12" x 25" with + on top". He marked two BT's: elm, 18", S47°W, 44 lks., and an oak, 14", N44 1/2°W, 80 1/4 lks. 07/30/98 D. Tlusty, D. Williams, M. Kielcheski dug with County backhoe at center of intersection. Down 1.5' below road surface, found a stone with chiseled "X" on top. I accepted it as the stone mentioned by Hutchinson and as the best evidence of a perpetuated corner location.

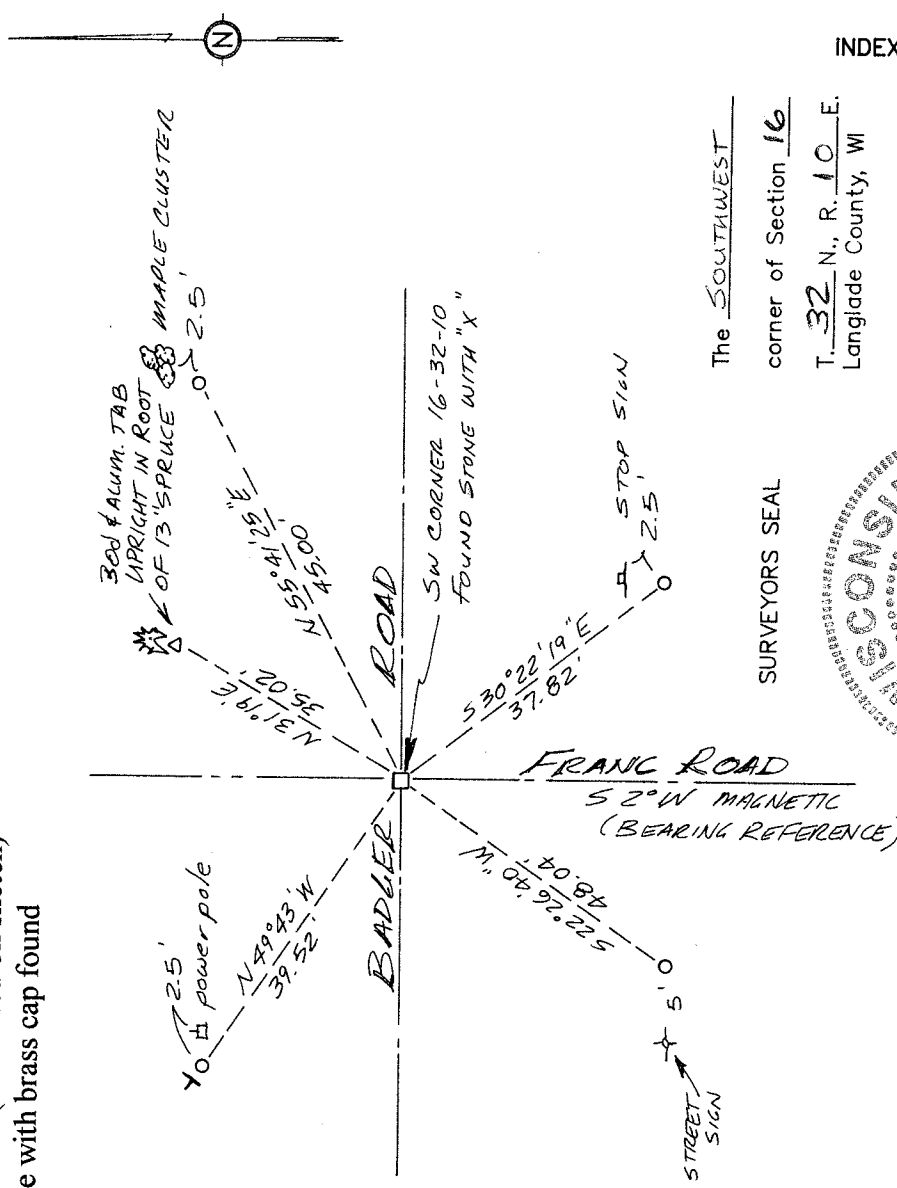
Physical description of the monument set:

For the corner, I left the stone as found. I set a 1" x 30" iron pipe, leaning west, on the east side of the stone so that the top of the pipe is 0.1' east of the "X" on the stone.

Describe the accessories used to perpetuate the location of the corner. Include a plan view drawing and indicate accessories found/set. Describe measuring point on bearing trees. Show any topographic features that would aid in future recovery of the corner.

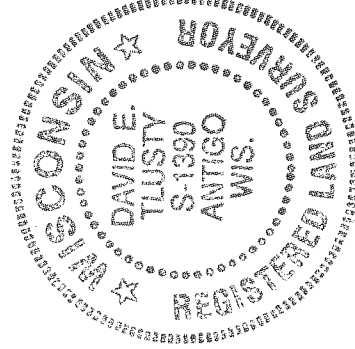
- = 3/4" x 30" rebar set flush
- ✚ = white vinyl sign post with "Survey Marker" sign set
- = iron pipe found (size noted on sketch)
- = 2" iron pipe with brass cap found

FB14-139

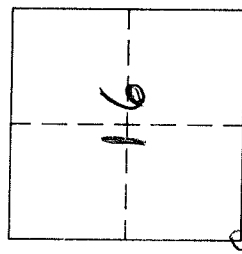


The SOUTHWEST corner of Section 16 T. 32 N., R. 10 E. Langlade County, WI

SURVEYORS SEAL



INDEX No. N 9



○ = Location of corner

DAVID E. TLUSTY
LANGLADE COUNTY SURVEYOR, certify that the corner location shown on this record was determined by me or under my direction and control and that this U.S. Public Land Survey Monument Record is correct and complete to the best of my knowledge and belief.

David E. Tlusty 10/8/98
Signature Date