

# LANGLADE COUNTY U.S. PUBLIC LAND CORNER RESTORATION

The East Quarter corner of Section 16, T. 32 N., R. 10 E., Langlade County, WI.

3210162000

**Corner was: (check all that apply)**

- Restored through acceptance of an obliterated evidence location.
- Restored through acceptance of a found perpetuated location.
- Determined to be lost and re-established through proportionate methods.
- Show bearings and distances to PLSS corners used for proportioning, and show original distances).
- Restored/recovered/re-established in a location that differs from a previously established position.
- (Show difference in plan view below).
- Check here if additional information is shown on the reverse side of this form.

**Describe record evidence, recovered physical evidence, occupational evidence, testimonial evidence and all other evidence considered in the recovery/restoration of the corner.**

The original corner was established in 1860 by Hiram Fellows. Original bearing trees: tamarac, 7", S73°E, 18 links and a tamarac, 6", N68°W, 11 links. In 1999, Tom Arnott set the corner on the section line, at the original government survey distance (48.8') north of the creek. 11/11/1999 D. Tlusty, D. Williams found the Arnott monument and marked the bearing trees shown below.

**Physical description of the monument set:**

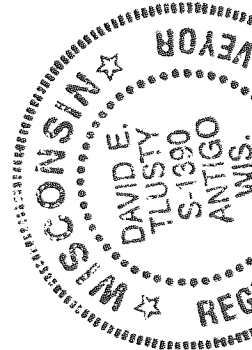
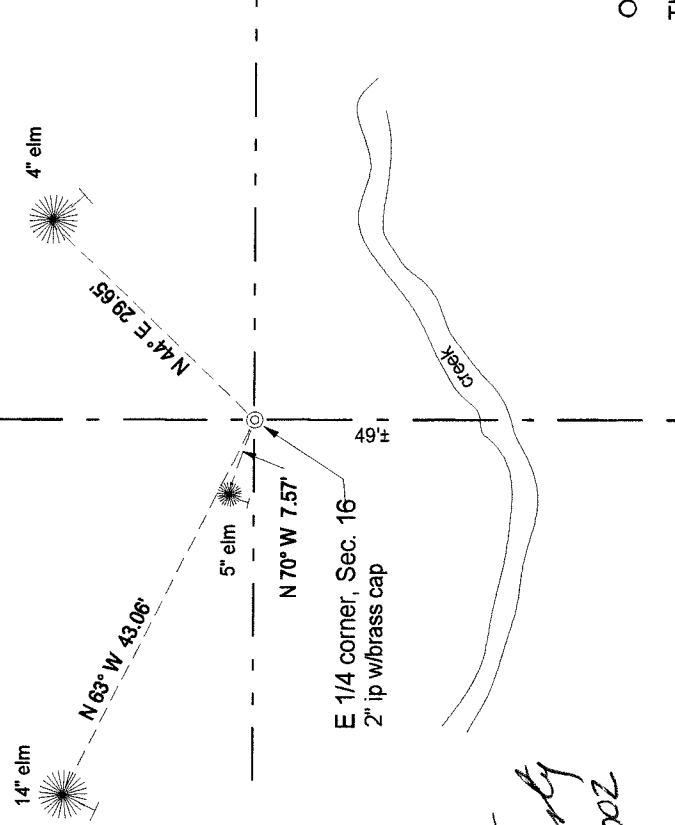
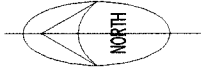
Existing 2" iron pipe monument with 3 1/4" brass cap.  
Set a white vinyl sign post on the North side of the monument.

**Describe the accessories used to perpetuate the corner. Include a plan view drawing and accessories found/set. Describe measuring point on bearing trees. Show any topographic features that would aid in future recovery of the corner.**

**LEGEND**

- Bearing trees are measured to a nail in a low blaze on the side of the tree shown.
- BT's painted blue.
- Tie bearings magnetic with hand compass.

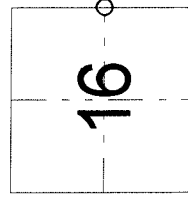
Field book, FB1B-19



*David E. Tlusty*  
July 2, 2002

Index No. \_\_\_\_\_

L13 32-10



O = corner perpetuated  
The East Quarter corner of Section 16, T. 32 N., R. 10 E., Langlade County, WI

I, David E. Tlusty, Registered Land Surveyor, as Langlade County Surveyor, certify that the corner location on this record was determined by me and that this U.S. Public Land Survey Monument Record is correct to the best of my knowledge and belief.